

## Product datasheet

# Recombinant E. coli surA protein ab99241

1 Image

### Description

---

<b>Product name</b>	Recombinant E. coli surA protein
<b>Biological activity</b>	Specific activity is > 800nmol/min/mg, and is defined as the amount of enzyme that cleaves 1nmole of suc-AAPF-pNA per minute at 37C in Tris-HCl pH 8.0 using chymotrypsin.
<b>Purity</b>	> 95 % SDS-PAGE. ab99241 is purified using conventional chromatography techniques.
<b>Expression system</b>	Escherichia coli
<b>Accession</b>	<b><u>P0ABZ6</u></b>
<b>Protein length</b>	Full length protein
<b>Animal free</b>	No
<b>Nature</b>	Recombinant
<b>Species</b>	Escherichia coli
<b>Sequence</b>	<b>MGSSHHHHHH SSSLVPRGSH M</b> APQVVDKVA AVVNNGVVLE SDVDGLMQSV KLNAAQARQQ LPDDATLRHQ IMERLIMDQI ILQMGQKMGV KISDEQLDQA IANIAKQNNM TLDQMRSRLA YDGLNYNTYR NQIRKEMIIS EVRNNEVRRR ITILPQEVES LAQQVGNQND ASTELNLSHI LIPLPENPTS DQVNEAESQA RAIVDQARNG ADFGKLAIAH SADQQALNGG QMGWGRIQEL PGIFAQALST AKKGDIVGPI RSGVGFHILK VNDLRGESKN ISVTEVHARH ILLKPSPIMT DEQARVKLEQ IAADIKSGKT TFAAAAKEFS QDPGSANQGG DLGWATPDIF DPAFRDALTR LNKGQMSAPV HSSFQWHLIE LLDTRNVDKT DAAQKDRAYR MLMNRKFSEE AASWMQEQRA SAYVKILSN
<b>Predicted molecular weight</b>	47 kDa
<b>Amino acids</b>	21 to 428
<b>Tags</b>	His tag N-Terminus

### Specifications

---

Our **Abpromise guarantee** covers the use of **ab99241** in the following tested applications.

The application notes include recommended starting dilutions; optimal dilutions/concentrations should be determined by the end user.

<b>Applications</b>	SDS-PAGE Mass Spectrometry Functional Studies
<b>Mass spectrometry</b>	MALDI-TOF
<b>Form</b>	Liquid

## Preparation and Storage

---

<b>Stability and Storage</b>	Shipped at 4°C. Upon delivery aliquot and store at -20°C or -80°C. Avoid repeated freeze / thaw cycles. pH: 8.00 Constituents: 0.316% Tris HCl, 10% Glycerol (glycerin, glycerine) This product is an active protein and may elicit a biological response in vivo, handle with caution.
------------------------------	--

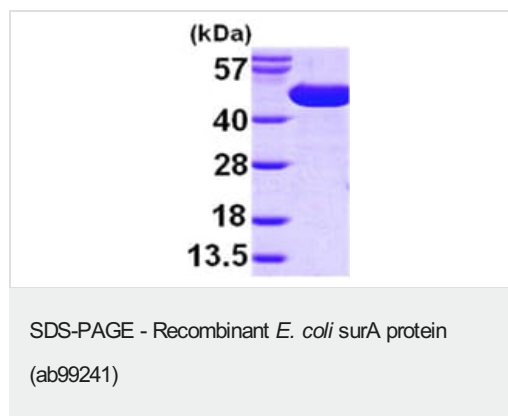
## General Info

---

<b>Relevance</b>	surA is a chaperone involved in the correct folding and assembly of outer membrane proteins, such as ompA, ompF and lamB. It recognizes specific patterns of aromatic residues and the orientation of their side chains, which are found more frequently in integral outer membrane proteins. surA may act in both early periplasmic and late outer membrane-associated steps of protein maturation and is essential for the survival of E.coli in stationary phase.
<b>Cellular localization</b>	Periplasm. Note: Is capable of associating with the outer membrane.

## Images

---



15% SDS-PAGE showing ab99241 at approximately 47.3kDa (3µg).

**Please note:** All products are "FOR RESEARCH USE ONLY. NOT FOR USE IN DIAGNOSTIC PROCEDURES"

## Our Abpromise to you: Quality guaranteed and expert technical support

---

- Replacement or refund for products not performing as stated on the datasheet
- Valid for 12 months from date of delivery
- Response to your inquiry within 24 hours

- We provide support in Chinese, English, French, German, Japanese and Spanish
- Extensive multi-media technical resources to help you
- We investigate all quality concerns to ensure our products perform to the highest standards

If the product does not perform as described on this datasheet, we will offer a refund or replacement. For full details of the Abpromise, please visit <https://www.abcam.com/abpromise> or contact our technical team.

### **Terms and conditions**

---

- Guarantee only valid for products bought direct from Abcam or one of our authorized distributors