

Product datasheet

Recombinant Envelope Glycoprotein (His tag) ab230280

[3 Images](#)

Description

Product name	Recombinant Envelope Glycoprotein (His tag)
Purity	> 70 % SDS-PAGE.
Expression system	Baculovirus infected Sf9 cells
Accession	<u>P87666</u>
Protein length	Full length protein
Animal free	No
Nature	Recombinant
Species	Ebolavirus
Amino acids	33 to 676
Tags	His tag C-Terminus
Additional sequence information	Minus the transmembrane domain.

Specifications

Our **Abpromise guarantee** covers the use of **ab230280** in the following tested applications.

The application notes include recommended starting dilutions; optimal dilutions/concentrations should be determined by the end user.

Applications	Western blot
	SDS-PAGE
	ELISA
Form	Liquid

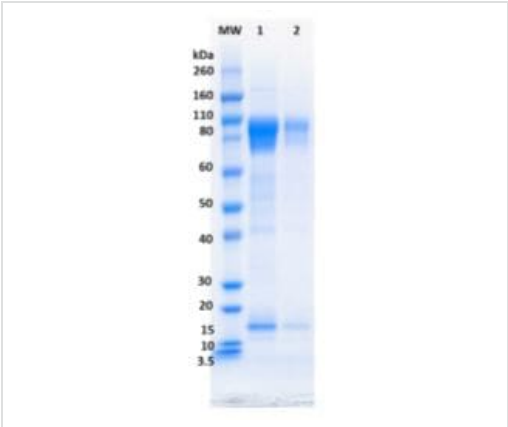
Preparation and Storage

Stability and Storage	Shipped at 4°C. Store at -80°C. Avoid freeze / thaw cycle.
	Constituent: PBS
	Supplemented with glycerol, arginine and glutamic acid

General Info

Cellular localization Virion membrane; Peripheral membrane protein.

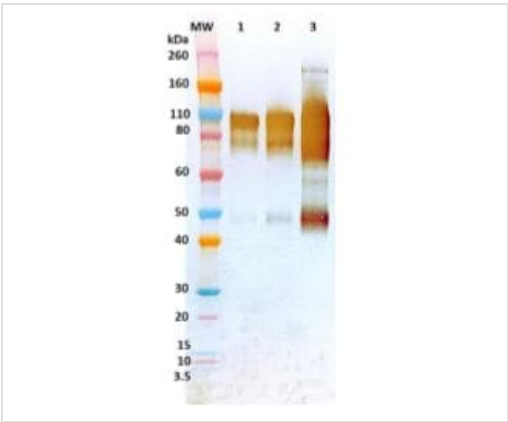
Images



SDS-PAGE - Recombinant Envelope Glycoprotein (His tag) (ab230280)

SDS-PAGE analysis of 5 µg and 1 µg (lane 1, 2 respectively) ab230280.

Because of the highly glycosylated nature of this protein, migration in an SDS-PAGE gel is slowed resulting in broad, diffuse bands representing differing glycosylation forms.



Western blot - Recombinant Envelope Glycoprotein (His tag) (ab230280)

All lanes : Rabbit anti-EBOV Envelope Glycoprotein polyclonal antibody

Lane 1 : Recombinant Envelope Glycoprotein (His tag) (ab230280) at 0.05 µg

Lane 2 : Recombinant Envelope Glycoprotein (His tag) (ab230280) at 0.1 µg

Lane 3 : Recombinant Envelope Glycoprotein (His tag) (ab230280) at 0.5 µg

Secondary

All lanes : Anti-rabbit IgG-HRP conjugate

Followed by TMB membrane substrate.

ab230280 ng/well	OD 650 nm
800.000	3.550
400.000	3.771
200.000	3.655
100.000	3.637
50.000	3.774
25.000	3.673
12.500	3.472
6.250	3.285
3.125	2.812
1.563	2.015
0.781	1.267
0.391	0.609

ELISA - Recombinant Envelope Glycoprotein (His tag) (ab230280)

ELISA analysis of ab230280. Plate was coated with ab230280 starting at 800 ng/well, serially diluted in DPBS. Washed plate was detected using one dilution of a positive control serum, followed with anti-IgG HRP conjugate and TMB substrate. OD₆₅₀ is reported.

Background of ab230280 coated plate positive control serum was 0.071 OD₆₅₀.

Please note: All products are "FOR RESEARCH USE ONLY. NOT FOR USE IN DIAGNOSTIC PROCEDURES"

Our Abpromise to you: Quality guaranteed and expert technical support

- Replacement or refund for products not performing as stated on the datasheet
- Valid for 12 months from date of delivery
- Response to your inquiry within 24 hours
- We provide support in Chinese, English, French, German, Japanese and Spanish
- Extensive multi-media technical resources to help you
- We investigate all quality concerns to ensure our products perform to the highest standards

If the product does not perform as described on this datasheet, we will offer a refund or replacement. For full details of the Abpromise, please visit <https://www.abcam.com/abpromise> or contact our technical team.

Terms and conditions

- Guarantee only valid for products bought direct from Abcam or one of our authorized distributors