

## Product datasheet

# Recombinant Herpes simplex virus HSV2 gB protein (His tag) ab225600

1 Image

### Description

---

<b>Product name</b>	Recombinant Herpes simplex virus HSV2 gB protein (His tag)
<b>Purity</b>	> 90 % SDS-PAGE.
<b>Expression system</b>	Escherichia coli
<b>Accession</b>	<u><b>P08666</b></u>
<b>Protein length</b>	Protein fragment
<b>Animal free</b>	No
<b>Nature</b>	Recombinant
<b>Species</b>	Herpes simplex virus
<b>Sequence</b>	APAAPAAPRASGGVAATVAANGGPASRPPPVSPATTK ARKRKTKKPPKR PEATPPPDANATVAAGHATLRAHLREIKVENADAQFYVCP PPTGATVVQF EQPRRCPTRPEGQNYTEGIAVVFKENIAPYKFKATMYKD VTVSQVWFGH RYSQFMGIFEDRAPVPFEEVIDKINTKGVCRSTAKYVRNN METTAFHRDD HETDMELKPAKVATRTRSGWHTTDLKYNPSRVEAFHRYG TTVNCMEEVD ARSVYPY
<b>Predicted molecular weight</b>	44 kDa including tags
<b>Amino acids</b>	23 to 279
<b>Tags</b>	His tag N-Terminus
<b>Additional sequence information</b>	Human herpesvirus 2 (strain HG52) (HHV-2) (Human herpes simplex virus 2). 6xHis-SUMO tag at the N-terminus

### Specifications

---

Our **Abpromise guarantee** covers the use of **ab225600** in the following tested applications.

The application notes include recommended starting dilutions; optimal dilutions/concentrations should be determined by the end user.

**Applications** SDS-PAGE

**Form** Liquid

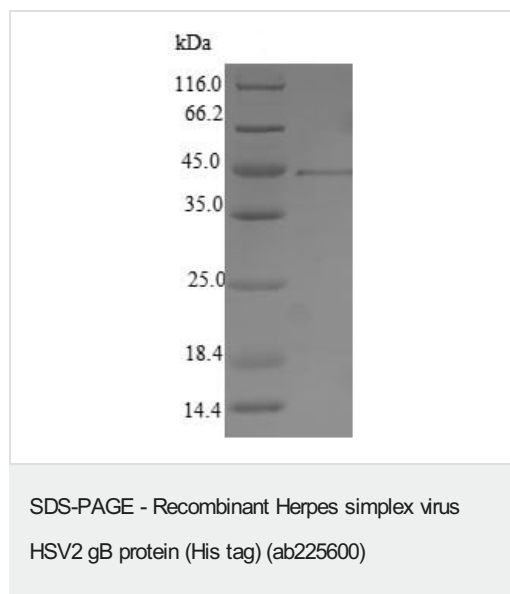
## Preparation and Storage

**Stability and Storage** Shipped at 4°C. Upon delivery aliquot. Store at -20°C or -80°C. Avoid freeze / thaw cycle.  
pH: 7.2  
Constituents: 50% Glycerol (glycerin, glycerine), Tris buffer

## General Info

**Relevance** Herpes simplex type 2 (HSV-2) belongs to a family that includes HSV-1, Epstein-Barr virus (EBV) and Varicella zoster (chicken pox) virus. HSV-1 and HSV-2 are extremely difficult to distinguish from each other. These viruses have a DNA genome, an icosahedral protein coat and are encased in a lipid membrane derived from the nuclear membrane of the last host. These viruses are capable of entering a latent phase where the host shows no visible sign of infection and levels of infectious agent become very low. During the latent phase the viral DNA is integrated into the genome of the host cell.

## Images



ab225600 analysed by SDS-PAGE (Tris-Glycine with 5% enrichment gel and 15% separation gel).

**Please note:** All products are "FOR RESEARCH USE ONLY. NOT FOR USE IN DIAGNOSTIC PROCEDURES"

## Our Abpromise to you: Quality guaranteed and expert technical support

- Replacement or refund for products not performing as stated on the datasheet
- Valid for 12 months from date of delivery
- Response to your inquiry within 24 hours
- We provide support in Chinese, English, French, German, Japanese and Spanish
- Extensive multi-media technical resources to help you

- We investigate all quality concerns to ensure our products perform to the highest standards

If the product does not perform as described on this datasheet, we will offer a refund or replacement. For full details of the Abpromise, please visit <https://www.abcam.com/abpromise> or contact our technical team.

#### **Terms and conditions**

---

- Guarantee only valid for products bought direct from Abcam or one of our authorized distributors