

Product datasheet

Recombinant HIV1 gp41 protein ab49070

[2 References](#) [1 Image](#)

Description

Product name	Recombinant HIV1 gp41 protein
Purity	> 90 % SDS-PAGE. Purified by affinity chromatography.
Expression system	Escherichia coli
Protein length	Protein fragment
Animal free	No
Nature	Recombinant

Sequence	IEFPGIFRPG GGDMRDNWRS ELYKYKVVKI EPLGVAPTKA KRRVVQREKR AVGIGALFLG FLGAAGSTMG AASMTLTVQA RQLLSGIVQQ QNNLLRAIEA QQHLLQLTVW GIKLQARIL AVERYLKDQQ LLGWGCSGK LICTTAVPWN ASWSNKSLEQ MNNMTWMEW DREINNYTSL IHSLEESQN QQEKNEQEL LELDKWASLW NWFNITNWLW YIKLFIMVG GLVGLRVFA VLSVVNRVRQ GYSPLSFQTH LPIPRGPDRP EGIEEEGGER DRDRSIRLVN GSLALWDDL RSLCLFSYHR LRDLLLIVTR MELLGRRGW EALKYWWNLL QYWSQELKNS AVSLLNATAI AVAEGTDRVI EVVQGAYRAI RHIPRRIRQG LERILL
-----------------	-----------------------------------------------------------------------------------------------------------------------------------------------------------------------------------------------------------------------------------------------------------------------------------------------------------------------------------------------------------------------------------------------------------------------------------------------------------------------------

Additional sequence information Tag: Beta galactosidase N-terminus.

Specifications

Our **Abpromise guarantee** covers the use of **ab49070** in the following tested applications.

The application notes include recommended starting dilutions; optimal dilutions/concentrations should be determined by the end user.

Applications	ELISA Western blot
Form	Liquid

Preparation and Storage

Stability and Storage Shipped at 4°C. Upon delivery aliquot and store at -20°C. Avoid freeze / thaw cycles.

pH: 7.2

Preservative: 0.01% Sodium azide

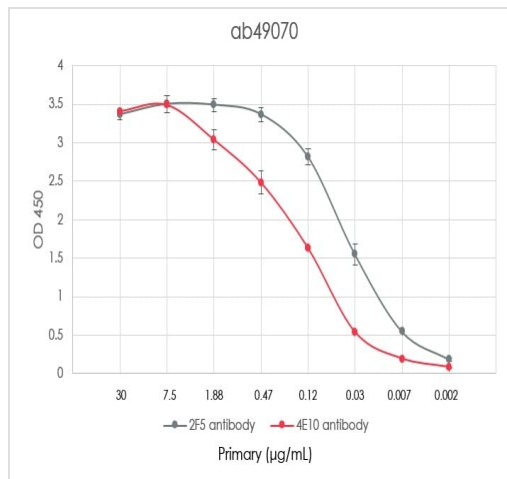
Constituents: 9% Urea, 0.395% Tris HCl, 0.0292% EDTA, 50% Glycerol (glycerin, glycerine)

General Info

Relevance

gp41/120 is the major HIV protein associated with the HIV envelope. It functions as the viral antireceptor or attachment protein. gp41 (or TM) traverses the envelope, whereas gp120 is present on the outer surface and is noncovalently attached to gp41. The precursor of gp120/41 (gp160) is synthesized in the endoplasmic reticulum and is transported via the golgi body to the cell surface. Upon activation of the envelope glycoprotein (gp120/41) by cellular receptors, gp41 undergoes conformational changes that mediate fusion of the viral and cellular membranes.

Images



ELISA - Recombinant HIV1 gp41 protein (ab49070)

ELISA using ab49070 at 2µg/mL Antibodies which recognise the 2F5 and 4E10 epitope were used as primary antibodies, and Protein A HRP was used as a secondary antibody.

Significance: gp41-specific antibodies which bind two different epitopes are able to recognize this full length gp41 in ELISA

Please note: All products are "FOR RESEARCH USE ONLY. NOT FOR USE IN DIAGNOSTIC PROCEDURES"

Our Abpromise to you: Quality guaranteed and expert technical support

- Replacement or refund for products not performing as stated on the datasheet
- Valid for 12 months from date of delivery
- Response to your inquiry within 24 hours
- We provide support in Chinese, English, French, German, Japanese and Spanish
- Extensive multi-media technical resources to help you
- We investigate all quality concerns to ensure our products perform to the highest standards

If the product does not perform as described on this datasheet, we will offer a refund or replacement. For full details of the Abpromise, please visit <https://www.abcam.com/abpromise> or contact our technical team.

Terms and conditions

- Guarantee only valid for products bought direct from Abcam or one of our authorized distributors