

Recombinant HPV16 L1 protein ab119880

2 References 3 Images

Description

Product name Recombinant HPV16 L1 protein

Purity > 90 % SDS-PAGE.
ab119880 is purified by ultracentrifugation.

Expression system Saccharomyces cerevisiae

Accession **P03101**

Protein length Full length protein

Animal free No

Nature Recombinant

Sequence MSLWLPSEATVYLPPVPVSKVVSTDEYVARTNIYHAGTS
RLLAVGHPYF
PIKKPNNKILVPKVSGLQYRVFRIHLPDPNKFGLPDTSFY
NPDTQRLVW
ACVGVEVGRGQPLGVGISGHPLLNLDDTENASAYAANA
GVDNRECISMD
YKQTLCLIGCKPPIGEHWGKGSPCTNVAVNPGDCCPLE
LINTVIQDGDM
VDTGFGAMDFTLQANKSEVPLDICTSICKYPDYIKMVSEP
YGDSLFFYL
RREQMFVRHLFNAGAVGENVPDDLKYGSGSTANLASS
NYFPTPSGSMV
TSDAQIFNKPYWLQRAQGHNNGICWGNQLFVTVVDTRST
NMSLCAAIST
SETTYKNTNFKEYLRHGEEYDLQFIFQLCKITLTADVMTYIH
SMNSTILE
DWNFGLQPPPGGTLEDTYRFVTSQAIACQKHTPPAPKED
PLKKYTFWEVN
LKEKFSADLDQFPLGRKFLLQAGLKAKPKFTLGKRKATPT
TSSTSTAKR KKRKL

Predicted molecular weight 56 kDa

Amino acids 1 to 505

Specifications

Our **Abpromise guarantee** covers the use of **ab119880** in the following tested applications.

The application notes include recommended starting dilutions; optimal dilutions/concentrations should be determined by the end user.

Applications	Western blot
	SDS-PAGE
	Electron Microscopy
Form	Lyophilized

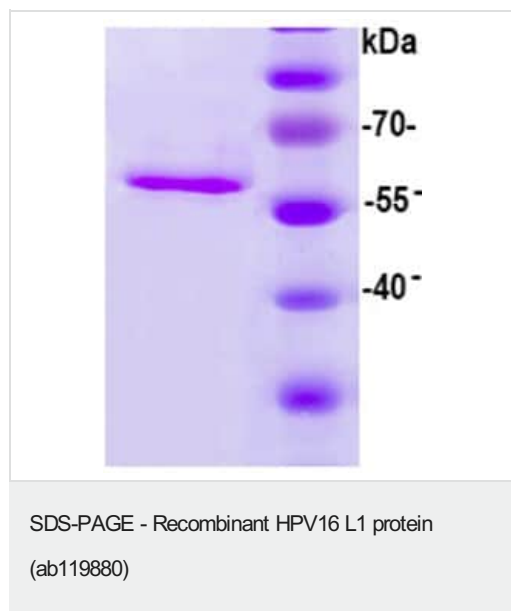
Preparation and Storage

Stability and Storage	Shipped at 4°C. After reconstitution store at -20°C. Avoid freeze / thaw cycles.
	Constituent: 99% PBS
Reconstitution	Reconstitute in 50 ul of water. Then dilute with PBS to the required concentration.

General Info

Relevance	L1 is a major capsid protein of type 16 human papilloma virus. Infection with specific types of HPV has been associated with an increased risk of developing cervical neoplasia. HPV types 6 and 11 have been associated with relatively benign diseases such as genital warts but types 16 and 18 are strongly associated with cervical, vaginal, and vulvar malignancies.
Cellular localization	Virion. Host Nucleus.

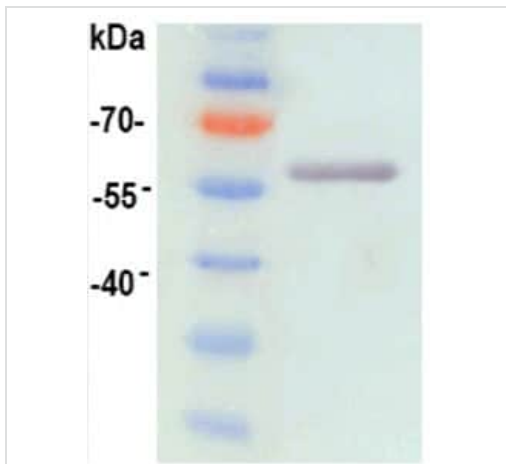
Images



SDS-PAGE analysis of ab119880.

Lane 1. ab119880

Lane 2. MWt marker

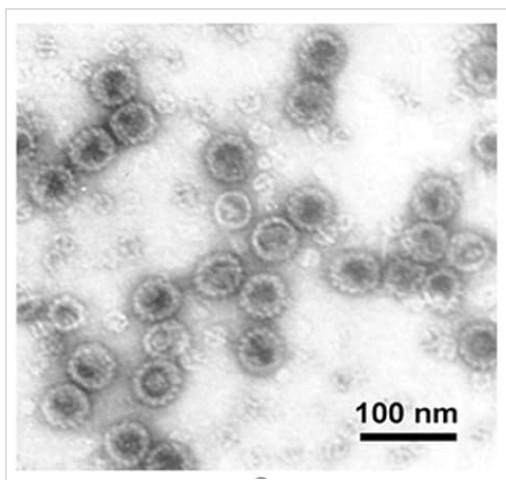


Western blot analysis of ab119880.

Lane 1. MWt marker

Lane 2. **ab119880**

Western blot - Recombinant HPV16 L1 protein
(ab119880)



ab119880 viewed by electron microscopy.

Electron Microscopy - Recombinant HPV16 L1
protein (ab119880)

Please note: All products are "FOR RESEARCH USE ONLY. NOT FOR USE IN DIAGNOSTIC PROCEDURES"

Our Abpromise to you: Quality guaranteed and expert technical support

- Replacement or refund for products not performing as stated on the datasheet
- Valid for 12 months from date of delivery
- Response to your inquiry within 24 hours
- We provide support in Chinese, English, French, German, Japanese and Spanish
- Extensive multi-media technical resources to help you

- We investigate all quality concerns to ensure our products perform to the highest standards

If the product does not perform as described on this datasheet, we will offer a refund or replacement. For full details of the Abpromise, please visit <https://www.abcam.com/abpromise> or contact our technical team.

Terms and conditions

- Guarantee only valid for products bought direct from Abcam or one of our authorized distributors