

Product datasheet

Recombinant Human 67kDa Laminin Receptor protein
ab114294

1 Image

Description

Product name	Recombinant Human 67kDa Laminin Receptor protein		
Expression system	Wheat germ		
Accession	<u>P08865</u>		
Protein length	Full length protein		
Animal free	No		
Nature	Recombinant		
Species	Human		
Sequence	MSGALDVLQMKEEDVLKFLAAGTHLGGTNLDFQMEQYY KRKSDGMIN LKRTWEKLLLAARAVAIENPADVSVISSRNTGQRAVLKFA AATGATPIA GRFTP GTFTNQIAAFREPRLLVVTDP RAGHQPLTEASYV NLPTIALCNT DSPLRYVDIAIPCNNKGAHSVGLMWWMLAREVLRMRGTIS REHPWEVMPD LYFYRDPEEIEKEEQAAAEKAVTKEEFQGEWTAPAPEFTA TQPEVADWSE GVQVPSVPIQQFPTEDWSAQPATEDWSAAPTAQATEWW GATTDWS		
Predicted molecular weight	59 kDa including tags		
Amino acids	1 to 295		

Specifications

Our <u>Abpromise guarantee</u> covers the use of ab114294 in the following tested applications.	
The application notes include recommended starting dilutions; optimal dilutions/concentrations should be determined by the end user.	
Applications	Western blot ELISA SDS-PAGE
Form	Liquid

Preparation and Storage

Stability and Storage

Shipped on dry ice. Upon delivery aliquot and store at -80°C. Avoid freeze / thaw cycles.

pH: 8.00

Constituents: 0.3% Glutathione, 0.79% Tris HCl

General Info

Function

Required for the assembly and/or stability of the 40S ribosomal subunit. Required for the processing of the 20S rRNA-precursor to mature 18S rRNA in a late step of the maturation of 40S ribosomal subunits. Also functions as a cell surface receptor for laminin. Plays a role in cell adhesion to the basement membrane and in the consequent activation of signaling transduction pathways. May play a role in cell fate determination and tissue morphogenesis. Acts as a PPP1R16B-dependent substrate of PPP1CA. Also acts as a receptor for several other ligands, including the pathogenic prion protein, viruses, and bacteria.

Sequence similarities

Belongs to the ribosomal protein S2P family.

Post-translational modifications

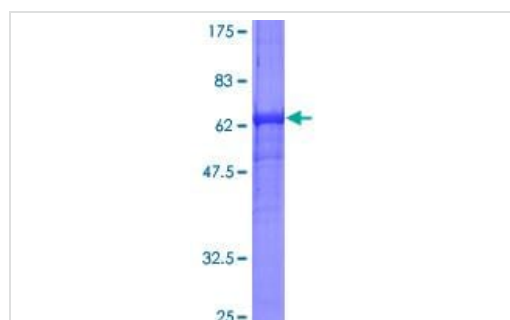
Acylated. Acylation may be a prerequisite for conversion of the monomeric 37 kDa laminin receptor precursor (37LRP) to the mature dimeric 67 kDa laminin receptor (67LR), and may provide a mechanism for membrane association.

Cleaved by stromelysin-3 (ST3) at the cell surface. Cleavage by stromelysin-3 may be a mechanism to alter cell-extracellular matrix interactions.

Cellular localization

Cell membrane. Cytoplasm. Nucleus. 67LR is found at the surface of the plasma membrane, with its C-terminal laminin-binding domain accessible to extracellular ligands. 37LRP is found at the cell surface, in the cytoplasm and in the nucleus (By similarity). Co-localizes with PPP1R16B in the cell membrane.

Images



SDS-PAGE - Recombinant Human 67kDa Laminin Receptor protein (ab114294)

12.5% SDS-PAGE image showing ab114294 at approx 58.56kDa. Stained with Coomassie Blue.

Please note: All products are "FOR RESEARCH USE ONLY. NOT FOR USE IN DIAGNOSTIC PROCEDURES"

Our Abpromise to you: Quality guaranteed and expert technical support

- Replacement or refund for products not performing as stated on the datasheet

- Valid for 12 months from date of delivery
- Response to your inquiry within 24 hours
- We provide support in Chinese, English, French, German, Japanese and Spanish
- Extensive multi-media technical resources to help you
- We investigate all quality concerns to ensure our products perform to the highest standards

If the product does not perform as described on this datasheet, we will offer a refund or replacement. For full details of the Abpromise, please visit <https://www.abcam.com/abpromise> or contact our technical team.

Terms and conditions

- Guarantee only valid for products bought direct from Abcam or one of our authorized distributors