

Recombinant Human Aciculin protein ab159104

1 Image

Description

Product name	Recombinant Human Aciculin protein
Expression system	Wheat germ
Accession	<u>Q15124</u>
Protein length	Full length protein
Animal free	No
Nature	Recombinant
Species	Human
Sequence	MVVGSDGRYFSRTAIEINVQMAAANGIGRLIIGQNGILSTPA VSCIIRKI KAAGGIILTASHCPGGPGGEFGVKFNVANGGPAPDVVSD KIYQISKTIEE YAICPDLRIDLSRLGRQEFDLENKFKPFRVEIMDPVDMLNL LRTIFDFH AIKGLLTGPSQLKIRIDAMHGVMGPYVRKVLCDLGAPAN SAINCVPLED FGGQHPDPNLTYATTLLLEAMKGGEYGFGAAFDADGDRYM ILGQNGFFVSP SDSLAIAANLSCIPYFRQMVGVRGFGRSMPTSMALDRVAK SMKVPVYETP AGWRFFSNLMDSGRCNLCGEESFGTGSDDLREKDGLW AVLVWLSIAARK QSVEENRDHWAKFGRHYICRFDYEGLDPKTTYIMRDLE ALVTDKFIG QQFAVGSHVYSVAKTDSFEYVDPVDGTVTKKQGLRIIFSD ASRLIFRLSS SSGVRATLRLYAESYERDPSGHDQEPQAVLSPLIAIALKIS QIHRTGRR GPTVIT
Amino acids	1 to 506
Tags	GST tag N-Terminus

Specifications

Our **Abpromise guarantee** covers the use of **ab159104** in the following tested applications.

The application notes include recommended starting dilutions; optimal dilutions/concentrations should be determined by the end user.

Applications	ELISA
	Western blot
Form	Liquid
Additional notes	This product was previously labelled as Phosphoglucomutase 5.

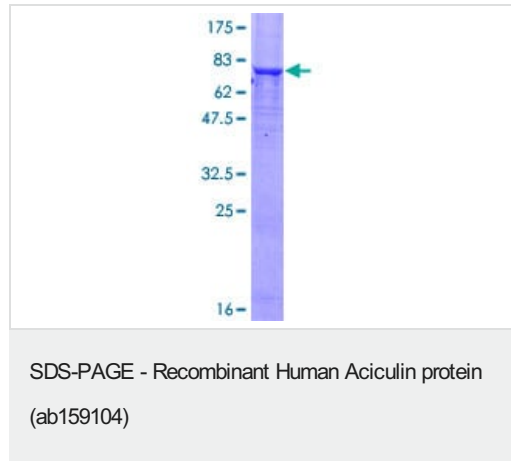
Preparation and Storage

Stability and Storage	Shipped on dry ice. Upon delivery aliquot and store at -80°C. Avoid freeze / thaw cycles.
	pH: 8.00
	Constituents: 0.31% Glutathione, 0.79% Tris HCl

General Info

Relevance	Phosphoglucomutase 5 is a phosphotransferase involved in the interconversion of glucose 1 phosphate and glucose 6 phosphate. This activity is essential in formation of carbohydrates from glucose 6 phosphate and in formation of glucose 6 phosphate from galactose and glycogen.
Cellular localization	Cell junction, adherens junction.

Images



ab159104 on a 12.5% SDS-PAGE stained with Coomassie Blue.

Please note: All products are "FOR RESEARCH USE ONLY. NOT FOR USE IN DIAGNOSTIC PROCEDURES"

Our Abpromise to you: Quality guaranteed and expert technical support

- Replacement or refund for products not performing as stated on the datasheet
- Valid for 12 months from date of delivery
- Response to your inquiry within 24 hours
- We provide support in Chinese, English, French, German, Japanese and Spanish
- Extensive multi-media technical resources to help you

- We investigate all quality concerns to ensure our products perform to the highest standards

If the product does not perform as described on this datasheet, we will offer a refund or replacement. For full details of the Abpromise, please visit <https://www.abcam.com/abpromise> or contact our technical team.

Terms and conditions

- Guarantee only valid for products bought direct from Abcam or one of our authorized distributors