

Recombinant Human ADAM2 protein ab117063

1 Image

Description

Product name	Recombinant Human ADAM2 protein
Expression system	Wheat germ
Accession	<u>Q99965-2</u>
Protein length	Full length protein
Animal free	No
Nature	Recombinant
Species	Human
Sequence	

MWRVLFLLSGLGGLRMDSNFDSLVPVQITVPEKIRSIIKEGIE  
SQASYKIV  
IEGKPYTVNLMQKNFLPHNFRVYSYSGTGIMKPLDQDFQN  
FCHYQGYIEG  
YPKSVVMVSTCTGLRGVLQFENVSYGIEPLESSVGFEHVIY  
QVKHKKADV  
SLYNEKDIESRDLSFKLQSVEYNHMGSDTTVVAQKVFQLI  
GLTNAIFVSF  
NITILSSLELWIDENKIATTGEANELLHTFLRWKTSYLVLRP  
DVAFL  
VYREKSNYVGATFQGKMCDANYAGGVVLHPTISLES  
LAQLLSLSM  
GITYDDINKCQC SGAVCIMNPEAIHFSGVKIFSNC  
SFEDFA  
HFISKQKSQ  
CLHNQPRLD PFFKQQA VCGNAKLEAGEE C  
DCGTEQDCA  
LIGETCCDIATC  
RFKAGSNCAEGPCCENCLFMSKERMCRPSFE  
ECDLPEY  
CNGSSASCPENH  
YVQTGHPCGLNQWICIDGVCMSGDKQCTDTFGKEVEFGP  
SECYSHLNSKT  
DVSGNCGISDSGYTQCEADNLQCGKCLICKYVGKFL  
LQIPR  
ATIIYANISG  
HLCIAVEFASDHADSQKMWIKDGTSCGSNKVCRNQR  
CVS  
SSYLGYDCTTD  
KCNDRGVCNNKKHCHCSASYLPPDCSVQSDLWP  
GGSID  
SGNFPPVAIPAR  
LPERRYENIYHSKPMRWPFFLFIPFFIIFCVLIAIMV  
KVNFR  
KKWRTE DYSSDEQPESESEPKG

<b>Predicted molecular weight</b>	105 kDa including tags
<b>Amino acids</b>	1 to 716

## Specifications

---

Our **Abpromise guarantee** covers the use of **ab117063** in the following tested applications.

The application notes include recommended starting dilutions; optimal dilutions/concentrations should be determined by the end user.

<b>Applications</b>	Western blot
	SDS-PAGE
	ELISA
<b>Form</b>	Liquid

## Preparation and Storage

---

<b>Stability and Storage</b>	Shipped on dry ice. Upon delivery aliquot and store at -80°C. Avoid freeze / thaw cycles.
	pH: 8.00
	Constituents: 0.3% Glutathione, 0.79% Tris HCl

## General Info

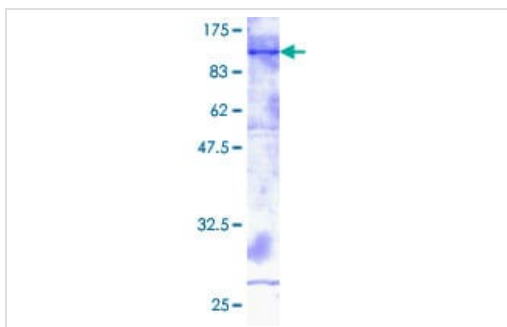
---

<b>Function</b>	Sperm surface membrane protein that may be involved in sperm-egg plasma membrane adhesion and fusion during fertilization. Could have a direct role in sperm-zona binding or migration of sperm from the uterus into the oviduct. Interactions with egg membrane could be mediated via binding between its disintegrin-like domain to one or more integrins receptors on the egg. This is a non catalytic metalloprotease-like protein.
<b>Tissue specificity</b>	Expressed specifically in spermatogenic cells in the seminiferous cells. Not detected in fetal tissues.
<b>Sequence similarities</b>	Contains 1 disintegrin domain. Contains 1 EGF-like domain. Contains 1 peptidase M12B domain.
<b>Domain</b>	A tripeptide motif (FEE) within disintegrin-like domain could be involved in the binding to egg integrin receptor and thus could mediate sperm/egg binding.
<b>Post-translational modifications</b>	The prodomain and the metalloprotease domain are cleaved during the epididymal maturation of the spermatozoa.
<b>Cellular localization</b>	Membrane.

---

## Images

---



SDS-PAGE - Recombinant Human ADAM2 protein  
(ab117063)

12.5% SDS-PAGE showing ab117063 at approximately 104.76 kDa.

Stained with Coomassie Blue.

**Please note:** All products are "FOR RESEARCH USE ONLY. NOT FOR USE IN DIAGNOSTIC PROCEDURES"

#### Our Abpromise to you: Quality guaranteed and expert technical support

---

- Replacement or refund for products not performing as stated on the datasheet
- Valid for 12 months from date of delivery
- Response to your inquiry within 24 hours
- We provide support in Chinese, English, French, German, Japanese and Spanish
- Extensive multi-media technical resources to help you
- We investigate all quality concerns to ensure our products perform to the highest standards

If the product does not perform as described on this datasheet, we will offer a refund or replacement. For full details of the Abpromise, please visit <https://www.abcam.com/abpromise> or contact our technical team.

#### Terms and conditions

---

- Guarantee only valid for products bought direct from Abcam or one of our authorized distributors