

## Product datasheet

# Recombinant Human AGA protein (His tag) ab219282

[1 Image](#)

### Description

---

<b>Product name</b>	Recombinant Human AGA protein (His tag)
<b>Purity</b>	> 90 % SDS-PAGE. Affinity purified
<b>Endotoxin level</b>	< 1.000 Eu/μg
<b>Expression system</b>	Baculovirus infected insect cells
<b>Accession</b>	<b><u>P20933</u></b>
<b>Protein length</b>	Full length protein
<b>Animal free</b>	No
<b>Nature</b>	Recombinant
<b>Species</b>	Human
<b>Predicted molecular weight</b>	36 kDa including tags
<b>Amino acids</b>	24 to 346
<b>Tags</b>	His tag C-Terminus
<b>Additional sequence information</b>	This product is for the mature full length protein. The signal peptide is not included. (NP_000018)

### Specifications

---

Our **Abpromise guarantee** covers the use of **ab219282** in the following tested applications.

The application notes include recommended starting dilutions; optimal dilutions/concentrations should be determined by the end user.

<b>Applications</b>	SDS-PAGE
<b>Form</b>	Liquid

### Preparation and Storage

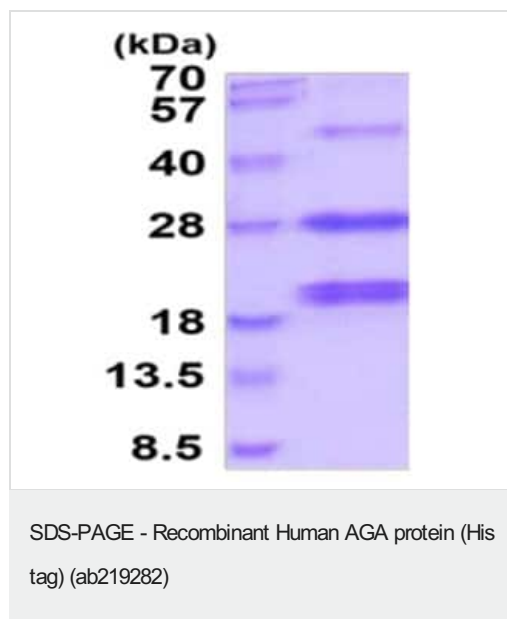
---

<b>Stability and Storage</b>	Shipped at 4°C. Store at +4°C short term (1-2 weeks). Upon delivery aliquot. Store at -20°C or -80°C. Avoid freeze / thaw cycle.  pH: 7.40 Constituents: 90% PBS, 10% Glycerol (glycerin, glycerine)
------------------------------	---------------------------------------------------------------------------------------------------------------------------------------------------------------------------------------------------------------

### General Info

<b>Function</b>	Cleaves the GlcNAc-Asn bond which joins oligosaccharides to the peptide of asparagine-linked glycoproteins.
<b>Involvement in disease</b>	Defects in AGA are the cause of aspartylglucosaminuria (AGU) [MIM:208400]. AGU is an inborn lysosomal storage disease. Clinical features of AGU include mild to severe mental retardation manifesting from the age of 2, coarse facial features and mild connective tissue abnormalities. This recessively inherited disease is overrepresented in the Finnish population.
<b>Sequence similarities</b>	Belongs to the Ntn-hydrolase family.
<b>Cellular localization</b>	Lysosome.

## Images



15% SDS-PAGE analysis of ab219282 (3µg).

**Please note:** All products are "FOR RESEARCH USE ONLY. NOT FOR USE IN DIAGNOSTIC PROCEDURES"

## Our Abpromise to you: Quality guaranteed and expert technical support

- Replacement or refund for products not performing as stated on the datasheet
- Valid for 12 months from date of delivery
- Response to your inquiry within 24 hours
- We provide support in Chinese, English, French, German, Japanese and Spanish
- Extensive multi-media technical resources to help you
- We investigate all quality concerns to ensure our products perform to the highest standards

If the product does not perform as described on this datasheet, we will offer a refund or replacement. For full details of the Abpromise, please visit <https://www.abcam.com/abpromise> or contact our technical team.

## Terms and conditions

- Guarantee only valid for products bought direct from Abcam or one of our authorized distributors