

## Product datasheet

# Recombinant Human ALDH1A1 protein ab89491

[2 Images](#)

### Description

---

<b>Product name</b>	Recombinant Human ALDH1A1 protein
<b>Purity</b>	> 90 % SDS-PAGE. ab89491 is purified using conventional chromatography techniques.
<b>Expression system</b>	Escherichia coli
<b>Protein length</b>	Full length protein
<b>Animal free</b>	No
<b>Nature</b>	Recombinant
<b>Species</b>	Human

### Specifications

---

Our **Abpromise guarantee** covers the use of **ab89491** in the following tested applications.

The application notes include recommended starting dilutions; optimal dilutions/concentrations should be determined by the end user.

<b>Applications</b>	Western blot SDS-PAGE
<b>Form</b>	Liquid

### Preparation and Storage

---

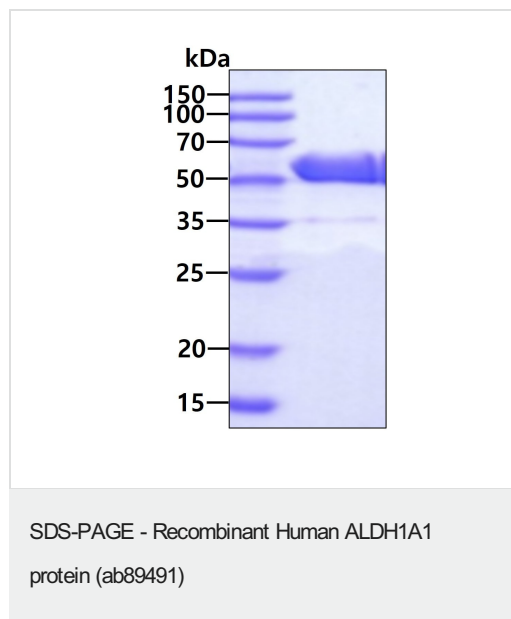
<b>Stability and Storage</b>	Shipped at 4°C. Upon delivery aliquot and store at -20°C or -80°C. Avoid repeated freeze / thaw cycles. pH: 7.50 Constituents: 0.79% Tris HCl, 10% Glycerol (glycerin, glycerine)
------------------------------	---

### General Info

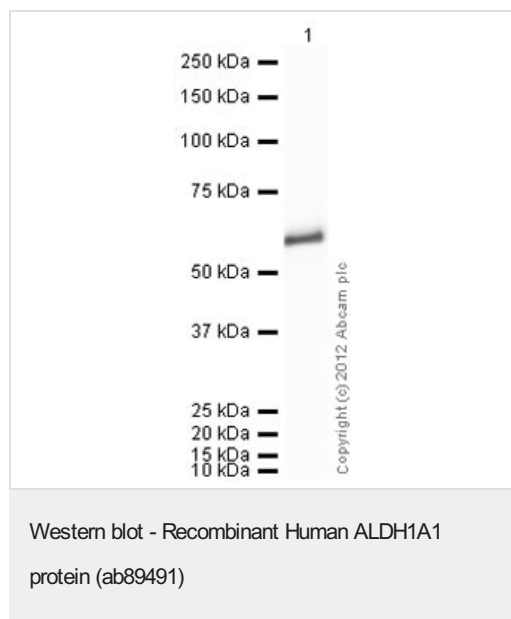
---

<b>Function</b>	Binds free retinal and cellular retinol-binding protein-bound retinal. Can convert/oxidize retinaldehyde to retinoic acid.
<b>Pathway</b>	Cofactor metabolism; retinol metabolism.
<b>Sequence similarities</b>	Belongs to the aldehyde dehydrogenase family.

## Images



15% SDS-PAGE showing ab89491 at approximately 54.8kDa (3µg).



Anti-ALDH1A1 antibody ([ab23375](#)) at 1 µg/ml + Recombinant Human ALDH1A1 protein (ab89491) at 0.1 µg

**Secondary**

Goat Anti-Rabbit IgG H&L (HRP) preadsorbed ([ab97080](#)) at 1/5000 dilution

Developed using the ECL technique.

Performed under reducing conditions.

**Exposure time:** 1 minute

**Please note:** All products are "FOR RESEARCH USE ONLY. NOT FOR USE IN DIAGNOSTIC PROCEDURES"

**Our Abpromise to you: Quality guaranteed and expert technical support**

- Replacement or refund for products not performing as stated on the datasheet
- Valid for 12 months from date of delivery
- Response to your inquiry within 24 hours
- We provide support in Chinese, English, French, German, Japanese and Spanish
- Extensive multi-media technical resources to help you

- We investigate all quality concerns to ensure our products perform to the highest standards

If the product does not perform as described on this datasheet, we will offer a refund or replacement. For full details of the Abpromise, please visit <https://www.abcam.com/abpromise> or contact our technical team.

#### **Terms and conditions**

---

- Guarantee only valid for products bought direct from Abcam or one of our authorized distributors