

## Product datasheet

# Recombinant Human ALK-7 protein ab125628

1 Image

### Description

---

<b>Product name</b>	Recombinant Human ALK-7 protein
<b>Purity</b>	> 75 % Densitometry. Affinity purified.
<b>Expression system</b>	Baculovirus infected Sf9 cells
<b>Accession</b>	<b><u>Q8NER5</u></b>
<b>Protein length</b>	Protein fragment
<b>Animal free</b>	No
<b>Nature</b>	Recombinant
<b>Species</b>	Human
<b>Predicted molecular weight</b>	68 kDa including tags
<b>Amino acids</b>	135 to 493
<b>Tags</b>	GST tag N-Terminus

### Specifications

---

Our **Abpromise guarantee** covers the use of **ab125628** in the following tested applications.

The application notes include recommended starting dilutions; optimal dilutions/concentrations should be determined by the end user.

<b>Applications</b>	Western blot SDS-PAGE
<b>Form</b>	Liquid
<b>Additional notes</b>	Protein previously known as Activin A Receptor Type IC.

### Preparation and Storage

---

<b>Stability and Storage</b>	Shipped on dry ice. Upon delivery aliquot and store at -80°C. Avoid freeze / thaw cycles. pH: 7.50 Constituents: 0.31% Glutathione, 0.002% PMSF, 0.004% DTT, 0.79% Tris HCl, 0.003% EDTA, 25% Glycerol (glycerin, glycerine), 0.88% Sodium chloride
------------------------------	---

### General Info

## General info

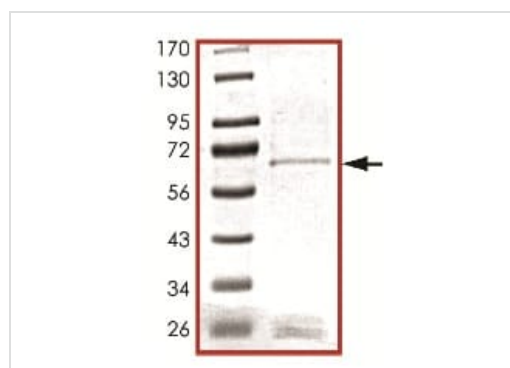
---

<b>Function</b>	Serine/threonine protein kinase which forms a receptor complex on ligand binding. The receptor complex consisting of 2 type II and 2 type I transmembrane serine/threonine kinases. Type II receptors phosphorylate and activate type I receptors which autophosphorylate, then bind and activate SMAD transcriptional regulators, SMAD2 and SMAD3. Receptor for activin AB, activin B and NODAL. Plays a role in cell differentiation, growth arrest and apoptosis.
<b>Tissue specificity</b>	Present in pancreas, heart, colon, small intestine, ovary and the hippocampus, medulla oblongata and putamen of the brain. Isoform 1, isoform 2, isoform 3 and isoform 4 are all expressed in the placenta throughout pregnancy.
<b>Sequence similarities</b>	Belongs to the protein kinase superfamily. TKL Ser/Thr protein kinase family. TGFB receptor subfamily. Contains 1 GS domain. Contains 1 protein kinase domain.
<b>Cellular localization</b>	Membrane.

---

## Images

---



SDS-PAGE of ab125628.

SDS-PAGE - Recombinant Human ALK-7 protein  
(ab125628)

**Please note:** All products are "FOR RESEARCH USE ONLY. NOT FOR USE IN DIAGNOSTIC PROCEDURES"

## Our Abpromise to you: Quality guaranteed and expert technical support

---

- Replacement or refund for products not performing as stated on the datasheet
- Valid for 12 months from date of delivery
- Response to your inquiry within 24 hours
- We provide support in Chinese, English, French, German, Japanese and Spanish
- Extensive multi-media technical resources to help you
- We investigate all quality concerns to ensure our products perform to the highest standards

If the product does not perform as described on this datasheet, we will offer a refund or replacement. For full details of the Abpromise, please visit <https://www.abcam.com/abpromise> or contact our technical team.

## Terms and conditions

---

- Guarantee only valid for products bought direct from Abcam or one of our authorized distributors