

## Product datasheet

# Recombinant Human alpha 1 Fetoprotein ab114216

[1 References](#) [1 Image](#)

### Description

---

<b>Product name</b>	Recombinant Human alpha 1 Fetoprotein
<b>Expression system</b>	Wheat germ
<b>Accession</b>	<b><u>P02771</u></b>
<b>Protein length</b>	Full length protein
<b>Animal free</b>	No
<b>Nature</b>	Recombinant
<b>Species</b>	Human
<b>Sequence</b>	<pre>MKWVESIFLIFLLNFTESRTLHRNEYGASILDSYQCTAEISL ADLATIF FAQFVQEATYKEVSKMVKDALTAIE KPTGDEQSSGCLENQLPAFLEEL CHEKEILEKYGHSDCCSQSEEGRHNCFLAHKKPTPASIPL FQVPEPVTSC EA YEEDRETFMNKFIYEIARRHPFLYAPTILLWAARYDKIIPSCC KAE NAVECFQTKAATVTKELRESSLLNQHACA VMKNFGTRTFQAITVTKLS QKFTKVNFTFIQKLVLDVAHVHEHCCRGDVLDCLDGGEKI MSYICSQQDT LSNKIT ECCKLTTLERGQCIIHAENDEKPEGLSPNLNRFLGDRDFN QF SSGEKNIFLASFVHEYSRRHPQLAVSVILRVAK GYQELLEKCFQTENP LECQDKGEEELQKYIQESQALAKRSCGLFQKLGEYYLQNA FLVAYTKKAP QLTSSSELMAI TRKMAATAATCCQLSEDKLLACGEGAADIIIGHLCIRH EMTPVNTGVGQCCTSSYANRRPCFSSLVVDETYVPPA FSDDKFIFHKD LCQAQGVVALQTMKQEFLINLVKQKPQITEEQLEAVIADFSG LLEKCCQGQ EQEVCFAEEGQKLI SKTRAALGV</pre>
<b>Predicted molecular weight</b>	95 kDa including tags
<b>Amino acids</b>	1 to 609
<b>Tags</b>	GST tag N-Terminus

### Specifications

---

Our **Abpromise guarantee** covers the use of **ab114216** in the following tested applications.

The application notes include recommended starting dilutions; optimal dilutions/concentrations should be determined by the end user.

<b>Applications</b>	ELISA SDS-PAGE Western blot
<b>Form</b>	Liquid
<b>Additional notes</b>	Protein concentration is lot specific and is above or equal to 0.05 mg/mL.

## Preparation and Storage

---

<b>Stability and Storage</b>	Shipped on dry ice. Upon delivery aliquot and store at -80°C. Avoid freeze / thaw cycles. pH: 8.00 Constituents: 0.3% Glutathione, 0.79% Tris HCl
------------------------------	---

## General Info

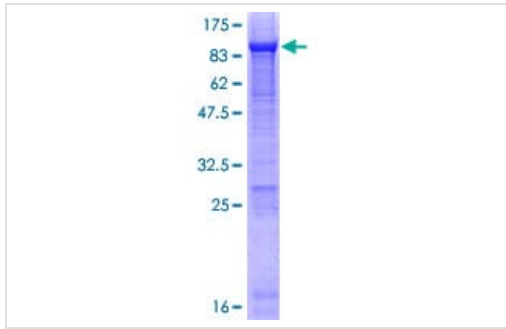
---

<b>Function</b>	Binds copper, nickel, and fatty acids as well as, and bilirubin less well than, serum albumin. Only a small percentage (less than 2%) of the human AFP shows estrogen-binding properties.
<b>Tissue specificity</b>	Plasma. Synthesized by the fetal liver and yolk sac.
<b>Sequence similarities</b>	Belongs to the ALB/AFP/VDB family. Contains 3 albumin domains.
<b>Developmental stage</b>	Occurs in the plasma of fetuses more than 4 weeks old, reaches the highest levels during the 12th-16th week of gestation, and drops to trace amounts after birth. The serum level in adults is usually less than 40 ng/ml. AFP occurs also at high levels in the plasma and ascitic fluid of adults with hepatoma.
<b>Post-translational modifications</b>	Independent studies suggest heterogeneity of the N-terminal sequence of the mature protein and of the cleavage site of the signal sequence. Sulfated.
<b>Cellular localization</b>	Secreted.

---

## Images

---



ab114216 analysed on a 12.5% SDS-PAGE gel stained with Coomassie Blue.

SDS-PAGE - Recombinant Human alpha 1 Fetoprotein (ab114216)

**Please note:** All products are "FOR RESEARCH USE ONLY. NOT FOR USE IN DIAGNOSTIC PROCEDURES"

### Our Abpromise to you: Quality guaranteed and expert technical support

---

- Replacement or refund for products not performing as stated on the datasheet
- Valid for 12 months from date of delivery
- Response to your inquiry within 24 hours
- We provide support in Chinese, English, French, German, Japanese and Spanish
- Extensive multi-media technical resources to help you
- We investigate all quality concerns to ensure our products perform to the highest standards

If the product does not perform as described on this datasheet, we will offer a refund or replacement. For full details of the Abpromise, please visit <https://www.abcam.com/abpromise> or contact our technical team.

### Terms and conditions

---

- Guarantee only valid for products bought direct from Abcam or one of our authorized distributors