

## Product datasheet

# Recombinant Human alpha Actinin/ACTN1 protein ab207132

[1 Image](#)

### Description

---

<b>Product name</b>	Recombinant Human alpha Actinin/ACTN1 protein
<b>Purity</b>	> 95 % SDS-PAGE. ab207132 was purified using conventional chromatography techniques.
<b>Expression system</b>	Escherichia coli
<b>Accession</b>	<b><u>P12814-3</u></b>
<b>Protein length</b>	Protein fragment
<b>Animal free</b>	No
<b>Nature</b>	Recombinant
<b>Species</b>	Human
<b>Sequence</b>	MGSSHHHHHSSGLVPRGSHMGSEFMDHYDSQQTNDY MQPEEDWDRDLLL DPAWEKQQRKTFTAWCNSHLRKAGTQIENIEEFRDGLK LMLLLEVISGE RLAKPERGKMRVHKISNVNKALDFIASKGVKLVSIGAEEN DGNVKMTLG MIWTILRFAIQDISVEETSAKEGLLLWCQRKTAPYKNVNIQN FHISWKD GLGFCALHRHRPELIDYGKLRKDDPLTNLNTAFDVAEKYL DIPKMLDAE DIVGTARPDEKAIMTYVSSFYHAF
<b>Predicted molecular weight</b>	31 kDa including tags
<b>Amino acids</b>	1 to 249
<b>Tags</b>	His tag N-Terminus
<b>Additional sequence information</b>	NP_001123476.

### Specifications

---

Our **Abpromise guarantee** covers the use of **ab207132** in the following tested applications.

The application notes include recommended starting dilutions; optimal dilutions/concentrations should be determined by the end user.

<b>Applications</b>	SDS-PAGE Mass Spectrometry
---------------------	-------------------------------

<b>Mass spectrometry</b>	MALDI-TOF
<b>Form</b>	Liquid
<b>Additional notes</b>	This product was previously labelled as alpha Actinin

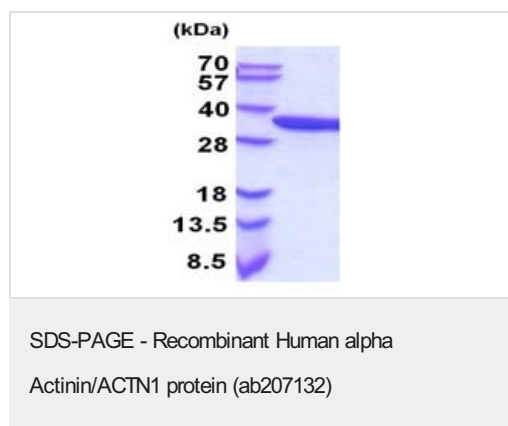
## Preparation and Storage

<b>Stability and Storage</b>	Shipped at 4°C. Store at +4°C short term (1-2 weeks). Upon delivery aliquot. Store at -20°C or -80°C. Avoid freeze / thaw cycle.  pH: 7.40 Constituents: 89% PBS, 10% Glycerol (glycerin, glycerine)
------------------------------	---

## General Info

<b>Function</b>	F-actin cross-linking protein which is thought to anchor actin to a variety of intracellular structures. This is a bundling protein.
<b>Sequence similarities</b>	Belongs to the alpha-actinin family. Contains 1 actin-binding domain. Contains 2 CH (calponin-homology) domains. Contains 2 EF-hand domains. Contains 4 spectrin repeats.
<b>Cellular localization</b>	Cytoplasm > cytoskeleton. Cytoplasm > myofibril > sarcomere > Z line. Colocalizes with MYOZ2 and PPP3CA at the Z-line of heart and skeletal muscle.

## Images



15% SDS-PAGE analysis of 3 µg ab207132.

**Please note:** All products are "FOR RESEARCH USE ONLY. NOT FOR USE IN DIAGNOSTIC PROCEDURES"

## Our Abpromise to you: Quality guaranteed and expert technical support

- Replacement or refund for products not performing as stated on the datasheet
- Valid for 12 months from date of delivery

- Response to your inquiry within 24 hours
- We provide support in Chinese, English, French, German, Japanese and Spanish
- Extensive multi-media technical resources to help you
- We investigate all quality concerns to ensure our products perform to the highest standards

If the product does not perform as described on this datasheet, we will offer a refund or replacement. For full details of the Abpromise, please visit <https://www.abcam.com/abpromise> or contact our technical team.

### **Terms and conditions**

---

- Guarantee only valid for products bought direct from Abcam or one of our authorized distributors