

## Product datasheet

# Recombinant Human alpha smooth muscle Actin protein ab134555

[1 References](#) [1 Image](#)

### Description

---

<b>Product name</b>	Recombinant Human alpha smooth muscle Actin protein
<b>Purity</b>	> 85 % SDS-PAGE. ab134555 is purified using conventional chromatography techniques.
<b>Expression system</b>	Escherichia coli
<b>Accession</b>	<b><u>P62736</u></b>
<b>Protein length</b>	Full length protein
<b>Animal free</b>	No
<b>Nature</b>	Recombinant
<b>Species</b>	Human
<b>Sequence</b>	MGSSHHHHHSSGLVPRGSHMGSHMEEEDSTALVCDN GSLCKAGFAGDD APRAVFPSIVGRPRHQGMVGMGQKDSYVGDEAQSKRGI LTLKYPIEHGI ITNWDDMEKIWHHSFYNELRVAPEEHPTLLTEAPLNPKAN REKMTQIMFE TFNVPAMYVAIQAVLSLYASGRRTGMLDSGDGVTHNVPYI EGYALPHAI MRLDLAGRDLTDYLMKILTERGYFVTTAEREMRDIKEKLC YVALDFEN EMATAASSSSLEKSYELPDGQVITIGNERFRCPETLFQPS FIGMESAGIH ETTYNSIMKCDIDIRKDLYANNVLSGGTTMYPGIADRMQKEI TALAPSTM KIKIAPPERKYSVWIGGSILASLSTFQQMWISKQEYDEAGP SVHRKCF
<b>Predicted molecular weight</b>	44 kDa including tags
<b>Amino acids</b>	3 to 377
<b>Tags</b>	His tag N-Terminus

### Specifications

---

Our **Abpromise guarantee** covers the use of **ab134555** in the following tested applications.

The application notes include recommended starting dilutions; optimal dilutions/concentrations should be determined by the end user.

**Applications** Mass Spectrometry

SDS-PAGE

**Mass spectrometry** MALDI-TOF

**Form** Liquid

## Preparation and Storage

**Stability and Storage** Shipped at 4°C. Store at +4°C short term (1-2 weeks). Upon delivery aliquot. Store at -20°C or -80°C. Avoid freeze / thaw cycle.

pH: 8.00

Constituents: 0.32% Tris HCl, 10% Glycerol (glycerin, glycerine), 0.88% Sodium chloride

## General Info

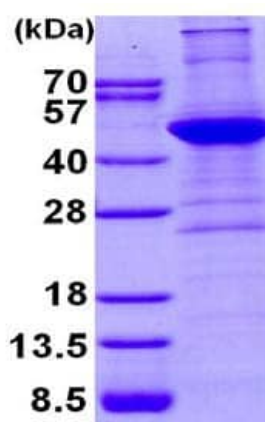
**Function** Actins are highly conserved proteins that are involved in various types of cell motility and are ubiquitously expressed in all eukaryotic cells.

**Involvement in disease** Defects in ACTA2 are the cause of aortic aneurysm familial thoracic type 6 (AAT6) [MIM:611788]. AATs are characterized by permanent dilation of the thoracic aorta usually due to degenerative changes in the aortic wall. They are primarily associated with a characteristic histologic appearance known as 'medial necrosis' or 'Erdheim cystic medial necrosis' in which there is degeneration and fragmentation of elastic fibers, loss of smooth muscle cells, and an accumulation of basophilic ground substance.

**Sequence similarities** Belongs to the actin family.

**Cellular localization** Cytoplasm > cytoskeleton.

## Images



15% SDS-PAGE analysis of 3 µg ab134555.

SDS-PAGE - Recombinant Human alpha smooth muscle Actin protein (ab134555)

**Please note:** All products are "FOR RESEARCH USE ONLY. NOT FOR USE IN DIAGNOSTIC PROCEDURES"

### **Our Abpromise to you: Quality guaranteed and expert technical support**

---

- Replacement or refund for products not performing as stated on the datasheet
- Valid for 12 months from date of delivery
- Response to your inquiry within 24 hours
  
- We provide support in Chinese, English, French, German, Japanese and Spanish
- Extensive multi-media technical resources to help you
- We investigate all quality concerns to ensure our products perform to the highest standards

If the product does not perform as described on this datasheet, we will offer a refund or replacement. For full details of the Abpromise, please visit <https://www.abcam.com/abpromise> or contact our technical team.

### **Terms and conditions**

---

- Guarantee only valid for products bought direct from Abcam or one of our authorized distributors