

Recombinant Human AMCase protein ab132796

1 Image

Description	
Product name	Recombinant Human AMCase protein
Expression system	Wheat germ
Accession	<u>Q9BZP6-2</u>
Protein length	Full length protein
Animal free	No
Nature	Recombinant
Species	Human
Sequence	MVSTPENRQTFITSVIKFLRQYEFDGLDFDWEYPGSRGSP PQDKHLFTVL VQEMREAFEQEAKQINKPRLMVTAAVAAGISNIQSGYEIPQ LSQYLDYIH VMTYDLHGSGWEGYTGENSPLYKYPTDTGSNAYLNVDYVM NYWKDNGAPAE KLMVGPTYGHNFILSNPSNTGIGAPTSAGPAGPYAKESGI WAYYEICT FLKNGATQGWDAPEVPYAYQGNVWVGYDNIKSFDIKAQ WLKHNKFGGAM VWAIDLDDFTGTFCNQGKFPLISTLKKALGLQSASCTAPA QPIEPITAAP SGSGNGSGSSSSGGSSGGSGFCAVRANGLYPVANNRRA FWHCVNGVTYQQ NCQAGLVFDTSCDCCNWA
Predicted molecular weight	67 kDa including tags
Amino acids	1 to 368

Specifications	
Our Abpromise guarantee covers the use of ab132796 in the following tested applications.	
The application notes include recommended starting dilutions; optimal dilutions/concentrations should be determined by the end user.	
Applications	ELISA SDS-PAGE Western blot
Form	Liquid

Additional notes

Preparation and Storage

Stability and Storage

Shipped on dry ice. Upon delivery aliquot and store at -80°C. Avoid freeze / thaw cycles.

pH: 8.00

Constituents: 0.31% Glutathione, 0.79% Tris HCl

General Info

Function

Degrades chitin and chitotriose. May participate in the defense against nematodes, fungi and other pathogens. Plays a role in T-helper cell type 2 (Th2) immune response. Contributes to the response to IL-13 and inflammation in response to IL-13. Stimulates chemokine production by pulmonary epithelial cells. Protects lung epithelial cells against apoptosis and promotes phosphorylation of AKT1. Its function in the inflammatory response and in protecting cells against apoptosis is inhibited by allosamidin, suggesting that the function of this protein depends on carbohydrate binding.

Tissue specificity

Detected in lung epithelial cells from asthma patients (at protein level). Highly expressed in stomach. Detected at lower levels in lung.

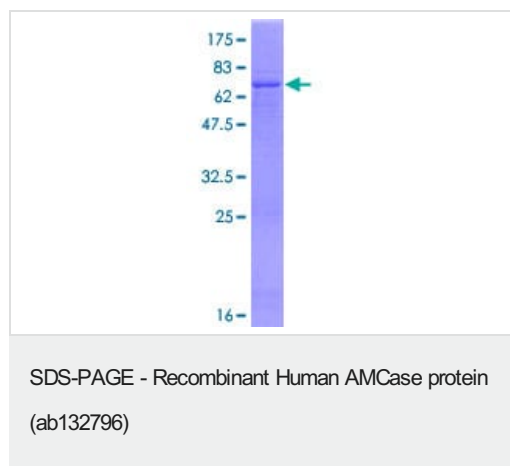
Sequence similarities

Belongs to the glycosyl hydrolase 18 family. Chitinase class II subfamily. Contains 1 chitin-binding type-2 domain.

Cellular localization

Cytoplasm and Secreted. Secretion depends on EGFR activity.

Images



12.5% SDS-PAGE analysis of ab132796 stained with Coomassie Blue.

Please note: All products are "FOR RESEARCH USE ONLY. NOT FOR USE IN DIAGNOSTIC PROCEDURES"

Our Abpromise to you: Quality guaranteed and expert technical support

- Replacement or refund for products not performing as stated on the datasheet

- Valid for 12 months from date of delivery
- Response to your inquiry within 24 hours
- We provide support in Chinese, English, French, German, Japanese and Spanish
- Extensive multi-media technical resources to help you
- We investigate all quality concerns to ensure our products perform to the highest standards

If the product does not perform as described on this datasheet, we will offer a refund or replacement. For full details of the Abpromise, please visit <https://www.abcam.com/abpromise> or contact our technical team.

Terms and conditions

- Guarantee only valid for products bought direct from Abcam or one of our authorized distributors