

## Product datasheet

# Recombinant Human AMF protein ab87625

[3 References](#) [2 Images](#)

### Description

---

|                          |   |
|--------------------------|---|
| <b>Product name</b>      | Recombinant Human AMF protein   |
| <b>Purity</b>            | > 95 % SDS-PAGE.<br>ab87625 is purified using conventional chromatography techniques. Endotoxin: < 1.0 EU per 1 µg of protein (determined by LAL method). |
| <b>Expression system</b> | Escherichia coli  |
| <b>Protein length</b>    | Full length protein   |
| <b>Animal free</b>       | No  |
| <b>Nature</b>            | Recombinant   |
| <b>Species</b>           | Human   |
| <b>Sequence</b>          |   |

```
MGSSHHHHHH SSGLVPRGSH MAALTRDPQF
QKLQQWYREH RSELNLRRLF DANKDRFNHF
SLTLNTNHGH ILVDYSKNLV TEDVMRMLVD
LAKSRGVEAA RERMFNGEKI NYTEGRAVLH
VALRNRSNTP ILVDGKDVMP EVNKVLDKMK
SFCQRVRS GD WKG YTGKTIT DVINIGIGGS DLGPLMVTEA
LKPYS SGGPR VWYVSNIDGT HIAKTLAQLN PESSLFIIAS
KTFTTQETIT NAETAKEWFL QAAKDPSAVA
KHFVALSTNT TKVKEFGIDP QNMF EFWDWV
GGRYSLWSAI GLSIALHVGF DNFEQLLSGA
HWMDQHFR TT PLEKNAPVLL ALLGIWYINC
FGCETHAMLP YDQYLHRFAA YFQQGDMESN
GKYITKSGTR VDHQTGPVW GEPGTNGQHA
FYQLIHQGTK MIPCDFLIPV QTQHPIRKGL HHKILLANFL
AQTEALMRGK STEEARKELQ AAGKSPEDLE
RLLPHKVFEG NRPTNSIVFT KLTPFMLGAL VAMYEHKIFV
QGIWDINSF DQWGV ELGKQ LAKKIEPELD
GSAQVTSHDA STNGLINFIK QQREARVQ
```

### Specifications

---

Our **Abpromise guarantee** covers the use of **ab87625** in the following tested applications.

The application notes include recommended starting dilutions; optimal dilutions/concentrations should be determined by the end user.

|                     |          |
|---------------------|----------|
| <b>Applications</b> | SDS-PAGE |
|---------------------|----------|

Western blot

**Form**

Liquid

**Additional notes**

This product was previously labelled as Glucose 6 phosphate isomerase

**Preparation and Storage**

---

**Stability and Storage**

Shipped at 4°C. Upon delivery aliquot and store at -20°C or -80°C. Avoid repeated freeze / thaw cycles.

pH: 8.00

Constituents: 0.0154% DTT, 0.316% Tris HCl, 10% Glycerol (glycerin, glycerine)

**General Info**

---

**Function**

Besides its role as a glycolytic enzyme, mammalian GPI can function as a tumor-secreted cytokine and an angiogenic factor (AMF) that stimulates endothelial cell motility. GPI is also a neurotrophic factor (Neuroleukin) for spinal and sensory neurons.

**Pathway**

Carbohydrate degradation; glycolysis; D-glyceraldehyde 3-phosphate and glyceraldehyde phosphate from D-glucose: step 2/4.

**Involvement in disease**

Defects in GPI are the cause of hemolytic anemia non-spherocytic due to glucose phosphate isomerase deficiency (HA-GPID) [MIM:613470]. It is a form of anemia in which there is no abnormal hemoglobin or spherocytosis. It is caused by glucose phosphate isomerase deficiency. Severe GPI deficiency can be associated with hydrops fetalis, immediate neonatal death and neurological impairment.

**Sequence similarities**

Belongs to the GPI family.

**Post-translational modifications**

Phosphorylation at Ser-185 by CK2 has been shown to decrease enzymatic activity and may contribute to secretion by a non-classical secretory pathway. ISGylated.

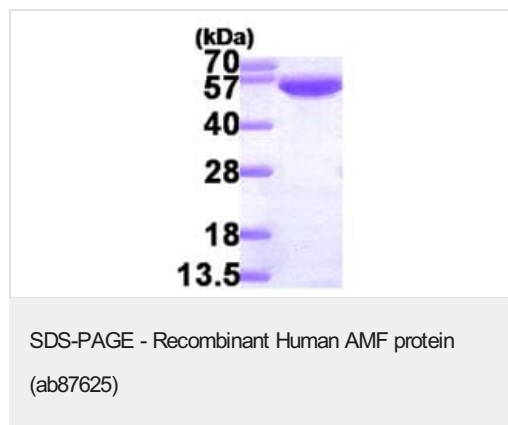
**Cellular localization**

Cytoplasm. Secreted.

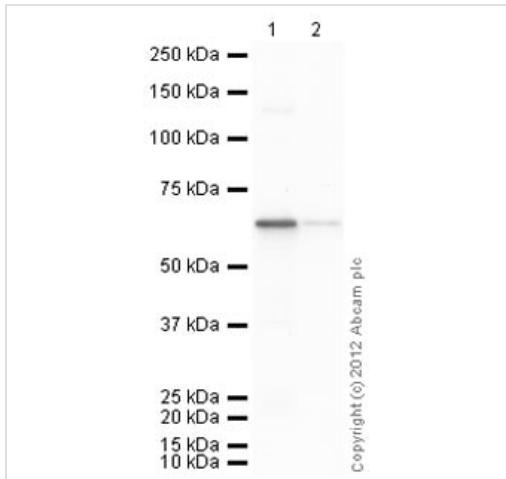
---

**Images**

---



15% SDS-PAGE showing ab87625 at approximately 65kDa (3µg).



Western blot - Recombinant Human AMF protein (ab87625)

**All lanes :** Anti-AMF antibody (**ab86950**) at 1 µg/ml

**Lane 1 :** Recombinant Human AMF protein (ab87625) at 0.1 µg

**Lane 2 :** Recombinant Human AMF protein (ab87625) at 0.01 µg

**Secondary**

**All lanes :** Goat Anti-Rabbit IgG H&L (HRP) preadsorbed (**ab97080**) at 1/5000 dilution

Developed using the ECL technique.

Performed under reducing conditions.

**Exposure time:** 30 seconds

**Please note:** All products are "FOR RESEARCH USE ONLY. NOT FOR USE IN DIAGNOSTIC PROCEDURES"

**Our Abpromise to you: Quality guaranteed and expert technical support**

- Replacement or refund for products not performing as stated on the datasheet
- Valid for 12 months from date of delivery
- Response to your inquiry within 24 hours
- We provide support in Chinese, English, French, German, Japanese and Spanish
- Extensive multi-media technical resources to help you
- We investigate all quality concerns to ensure our products perform to the highest standards

If the product does not perform as described on this datasheet, we will offer a refund or replacement. For full details of the Abpromise, please visit <https://www.abcam.com/abpromise> or contact our technical team.

**Terms and conditions**

- Guarantee only valid for products bought direct from Abcam or one of our authorized distributors