

Product datasheet

Recombinant Human AMHR2 protein ab201383

[1 Image](#)

Description

Product name	Recombinant Human AMHR2 protein
Purity	> 70 % Densitometry. Affinity purified.
Expression system	Baculovirus infected Sf9 cells
Accession	<u>NM_020547</u>
Protein length	Protein fragment
Animal free	No
Nature	Recombinant
Species	Human
Sequence	QRKNYRVRGE PVPEPRPDSG RDWSVELQEL PELCFSQVIR EGGHAVVWAG QLQGKLVAIK AFPPRSVAQF QAERALYELP GLQHDHIVRF ITASRGGPGR LLSGPLLVE LHPKGSGLCHY LTQYTSDWGS SLRMALSLAQ GLAFLHEERW QNGQYKPGIA HRDLSSQNVL IREDGSCAIG DLGLALVLPGLTQPPAWTPTQPQGPAAIME AGTQRYMAPE LLDKTLDLQD WGMALRRADI YSLALLLWEILSRCPDLRPDSSPPPFQLAY EAELGNTPTS DELWALAVQE RRRPYIPSTW RCFATDPDGL RELLEDWCWDA DPEARLTAEC VQQLAALAH PQESHPPFES CPRGCPPLCP EDCTSIPAPTILPCRQRSA CHFSVQQGPC SRNPQPACTLSPV
Predicted molecular weight	70 kDa including tags
Amino acids	171 to 573
Tags	GST tag N-Terminus

Specifications

Our **Abpromise guarantee** covers the use of **ab201383** in the following tested applications.

The application notes include recommended starting dilutions; optimal dilutions/concentrations should be determined by the end user.

Applications	SDS-PAGE
---------------------	----------

Form Liquid

Preparation and Storage

Stability and Storage

Shipped on Dry Ice. Store at -80°C. Avoid freeze / thaw cycle.

pH: 7.50

Constituents: 0.79% Tris HCl, 0.87% Sodium chloride, 0.31% Glutathione, 0.003% EDTA, 0.004% DTT, 0.002% PMSF, 25% Glycerol (glycerin, glycerine)

General Info

Function

On ligand binding, forms a receptor complex consisting of two type II and two type I transmembrane serine/threonine kinases. Type II receptors phosphorylate and activate type I receptors which autophosphorylate, then bind and activate SMAD transcriptional regulators. Receptor for anti-Muellerian hormone.

Involvement in disease

Defects in AMHR2 are the cause of persistent Muellerian duct syndrome type 2 (PMDS2) [MIM:261550]. PMDS2 is a form of male pseudohermaphroditism characterized by a failure of Muellerian duct regression in otherwise normal males.

Sequence similarities

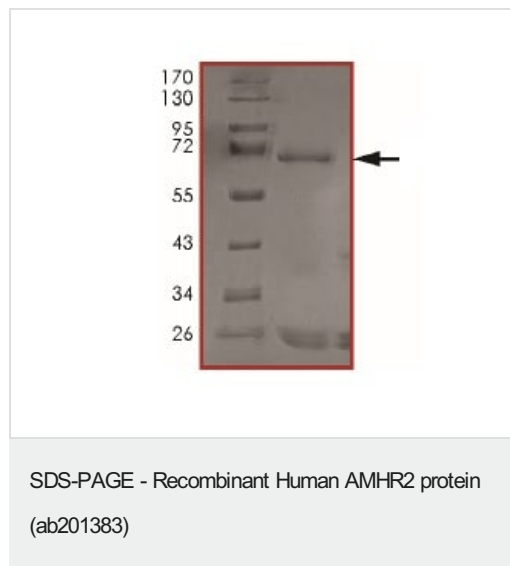
Belongs to the protein kinase superfamily. TKL Ser/Thr protein kinase family. TGFB receptor subfamily.

Contains 1 protein kinase domain.

Cellular localization

Membrane.

Images



SDS analysis of ab201383

Please note: All products are "FOR RESEARCH USE ONLY. NOT FOR USE IN DIAGNOSTIC PROCEDURES"

Our Abpromise to you: Quality guaranteed and expert technical support

- Replacement or refund for products not performing as stated on the datasheet
- Valid for 12 months from date of delivery
- Response to your inquiry within 24 hours

- We provide support in Chinese, English, French, German, Japanese and Spanish
- Extensive multi-media technical resources to help you
- We investigate all quality concerns to ensure our products perform to the highest standards

If the product does not perform as described on this datasheet, we will offer a refund or replacement. For full details of the Abpromise, please visit <https://www.abcam.com/abpromise> or contact our technical team.

Terms and conditions

- Guarantee only valid for products bought direct from Abcam or one of our authorized distributors