

Product datasheet

Recombinant Human Angiotensin II Type 2 Receptor protein ab157871

2 References 1 Image

Description

Product name	Recombinant Human Angiotensin II Type 2 Receptor protein
Expression system	Wheat germ
Protein length	Full length protein
Animal free	No
Nature	Recombinant
Species	Human
Sequence	MKGNSTLATTSKNITSGLHFGLVNISGNNESTLNCSQKPSD KHLDAIPIL YYIFVIGFLVNIVVTLFCCQKGPKKVSSMFNLAVADLLLL ATLPLW ATYYSYRYDWLFGPVMCKVFGSFLTNMFASIFFITCMSVD RYQSVIYPF LSQRRNPWQASYVPLVWCMACLSSLPTFYFRDVRTIEYL GVNACIMAFP PEKYAQWSAGIALMKNILGFIIPLIATCYFGIRKHLLKTNSY GKNRIT RDQVLKMAAAVVLAFIICWLPFHVLTFLDALAWMGVINSC EVIVIDLAL PFAILLGFTNSCVNPFLYCFVGNRFQQKLRSVFRVPITWLQ GKRESMSCR KSSSLREMETFVS
Amino acids	1 to 363
Tags	GST tag N-Terminus

Specifications

Our **Abpromise guarantee** covers the use of **ab157871** in the following tested applications.
The application notes include recommended starting dilutions; optimal dilutions/concentrations should be determined by the end user.

Applications	ELISA Blocking
Form	Liquid

Additional notes

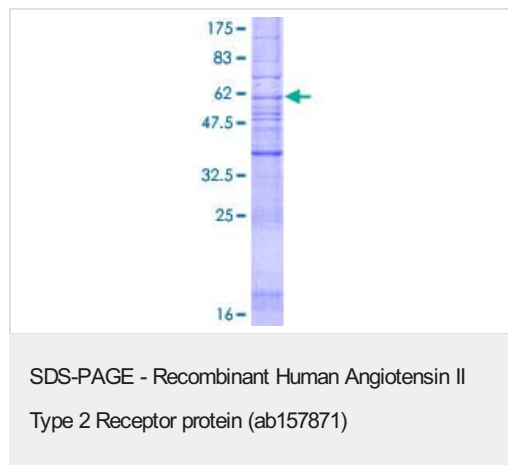
Preparation and Storage

Stability and Storage	Shipped on dry ice. Upon delivery aliquot and store at -80°C. Avoid freeze / thaw cycles. pH: 8.00 Constituents: 0.31% Glutathione, 0.79% Tris HCl
------------------------------	--

General Info

Function	Receptor for angiotensin II. Cooperates with MTUS1 to inhibit ERK2 activation and cell proliferation.
Tissue specificity	In adult, highly expressed in myometrium with lower levels in adrenal gland and fallopian tube. Very highly expressed in fetal kidney and intestine.
Sequence similarities	Belongs to the G-protein coupled receptor 1 family.
Cellular localization	Cell membrane.

Images



ab157871 on a 12.5% SDS-PAGE stained with Coomassie Blue.

Please note: All products are "FOR RESEARCH USE ONLY. NOT FOR USE IN DIAGNOSTIC PROCEDURES"

Our Abpromise to you: Quality guaranteed and expert technical support

- Replacement or refund for products not performing as stated on the datasheet
- Valid for 12 months from date of delivery
- Response to your inquiry within 24 hours
- We provide support in Chinese, English, French, German, Japanese and Spanish
- Extensive multi-media technical resources to help you
- We investigate all quality concerns to ensure our products perform to the highest standards

If the product does not perform as described on this datasheet, we will offer a refund or replacement. For full details of the Abpromise, please visit <https://www.abcam.com/abpromise> or contact our technical team.

Terms and conditions

- Guarantee only valid for products bought direct from Abcam or one of our authorized distributors