

Product datasheet

Recombinant Human Annexin A1/ANXA1 protein (His tag) ab92966

[1 Image](#)

Description

Product name	Recombinant Human Annexin A1/ANXA1 protein (His tag)
Purity	> 90 % SDS-PAGE. Purified by 6xHis tag / Immobilized-metal affinity chromatography (IMAC).
Expression system	Escherichia coli
Accession	<u>P04083</u>
Protein length	Full length protein
Animal free	No
Nature	Recombinant
Species	Human
Sequence	MAMVSEFLKQAWFIENEEQEYVQTVKSSKGGPGSAVSPY PTFNPSSDVAA LHKAIMVKGVDIATIIDILTKRNNAQRQQIKAAYLQETGKPL DETLKKAL TGHLEEVVLLALLKTPAQFDADELRAAMKGLGTDEDLIEIL ASRTNKEIR DINRVYREELKRDIAKDITSDTSGDFRNALLSLAKGDRSE DFGVNEDLAD SDARALYEAGERRKGTDVNVFNTILTTRSYPQLRRVFQKYT KYSKHDMNK VLDLELKGDIKCLTAMKCATSKPAFFAEKLNQAMKGVG TRHKALIRIM VSRSEIDMNDIKAFYQKMYGISLCQAILDETKGDYKILVAL CGGN
Amino acids	1 to 346
Tags	His tag N-Terminus

Specifications

Our **Abpromise guarantee** covers the use of **ab92966** in the following tested applications.

The application notes include recommended starting dilutions; optimal dilutions/concentrations should be determined by the end user.

Applications Western blot

ELISA
SDS-PAGE
Mass Spectrometry

Form Liquid

Preparation and Storage

Stability and Storage Shipped on dry ice. Upon delivery aliquot and store at -80°C. Avoid freeze / thaw cycles.
pH: 8.00
Preservative: 0.68% Imidazole
Constituents: 0.0078% Beta mercaptoethanol, 0.316% Tris HCl, 2.9% Sodium chloride

General Info

Function Calcium/phospholipid-binding protein which promotes membrane fusion and is involved in exocytosis. This protein regulates phospholipase A2 activity. It seems to bind from two to four calcium ions with high affinity.

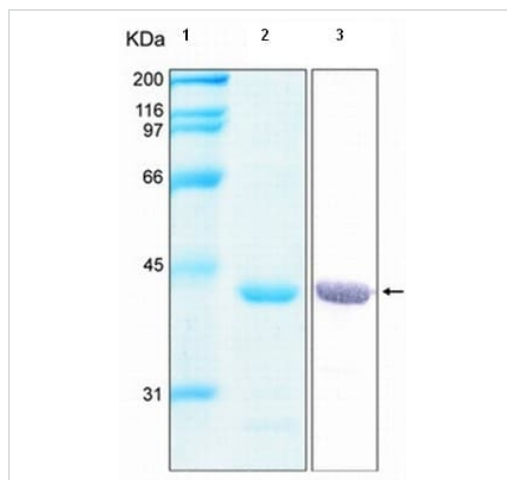
Sequence similarities Belongs to the annexin family.
Contains 4 annexin repeats.

Domain A pair of annexin repeats may form one binding site for calcium and phospholipid.

Post-translational modifications Phosphorylated by protein kinase C, epidermal growth factor receptor/kinase and TRPM7. Phosphorylation results in loss of the inhibitory activity.

Cellular localization Nucleus. Cytoplasm. Cell projection > cilium. Basolateral cell membrane. Found in the cilium, nucleus and basolateral cell membrane of ciliated cells in the tracheal endothelium (By similarity). Found in the cytoplasm of type II pneumocytes and alveolar macrophages.

Images



12% SDS-PAGE showing ab92966

Lane 1 MWM

Lane 2 Stained with Coomassie Blue

Lane 3 Peptide fingerprinting by MALDI-TOF-TOF mass spectrometry

SDS-PAGE - Recombinant Human Annexin
A1/ANXA1 protein (ab92966)

Please note: All products are "FOR RESEARCH USE ONLY. NOT FOR USE IN DIAGNOSTIC PROCEDURES"

Our Abpromise to you: Quality guaranteed and expert technical support

- Replacement or refund for products not performing as stated on the datasheet
- Valid for 12 months from date of delivery
- Response to your inquiry within 24 hours

- We provide support in Chinese, English, French, German, Japanese and Spanish
- Extensive multi-media technical resources to help you
- We investigate all quality concerns to ensure our products perform to the highest standards

If the product does not perform as described on this datasheet, we will offer a refund or replacement. For full details of the Abpromise, please visit <https://www.abcam.com/abpromise> or contact our technical team.

Terms and conditions

- Guarantee only valid for products bought direct from Abcam or one of our authorized distributors