

Product datasheet

Recombinant Human Antithrombin III/ATIII protein ab157920

[1 Image](#)

Description

Product name	Recombinant Human Antithrombin III/ATIII protein
Expression system	Wheat germ
Protein length	Full length protein
Animal free	No
Nature	Recombinant
Species	Human
Sequence	<p> MYSNVIGTVTSGKRKVYLLSLLLIGFWDCVTCHGSPVDICT AEPRDIPMN PMCIYRSPEKKATEDEGSEQKIPEATNRRVWELSKANSRF ATTFYQHLAD SKNDNDNIFLSPLSISTAFAMTKLGACNDTLQQLMEVFKF DTISEKTSQ IHFFFAKLNCRLYRKANKSSKLVSANRLFGDKSLTFNDLYV SDAFHKAFL EVNEEGSEAAASTAVVIAGRSLNPNRVTFKANRPFLVFIR EVPLNTIIFM GRVANPCVK </p>
Amino acids	1 to 259
Tags	GST tag N-Terminus

Specifications

Our **Abpromise guarantee** covers the use of **ab157920** in the following tested applications.

The application notes include recommended starting dilutions; optimal dilutions/concentrations should be determined by the end user.

Applications	<p>ELISA</p> <p>Western blot</p>
Form	Liquid
Additional notes	This product was previously labelled as Antithrombin III.

Preparation and Storage

Preparation and Storage

Stability and Storage

Shipped on dry ice. Upon delivery aliquot and store at -80°C. Avoid freeze / thaw cycles.

pH: 8.00

Constituents: 0.31% Glutathione, 0.79% Tris HCl

General Info

Function

Most important serine protease inhibitor in plasma that regulates the blood coagulation cascade. AT-III inhibits thrombin as well as factors IXa, Xa and XIa. Its inhibitory activity is greatly enhanced in the presence of heparin.

Tissue specificity

Found in plasma.

Involvement in disease

Defects in SERPINC1 are the cause of antithrombin III deficiency (AT3D) [MIM:613118]. AT3D is an important risk factor for hereditary thrombophilia, a hemostatic disorder characterized by a tendency to recurrent thrombosis. AT3D is classified into 4 types. Type I: characterized by a 50% decrease in antigenic and functional levels. Type II: has defects affecting the thrombin-binding domain. Type III: alteration of the heparin-binding domain. Plasma AT-III antigen levels are normal in type II and III. Type IV: consists of miscellaneous group of unclassifiable mutations.

Sequence similarities

Belongs to the serpin family.

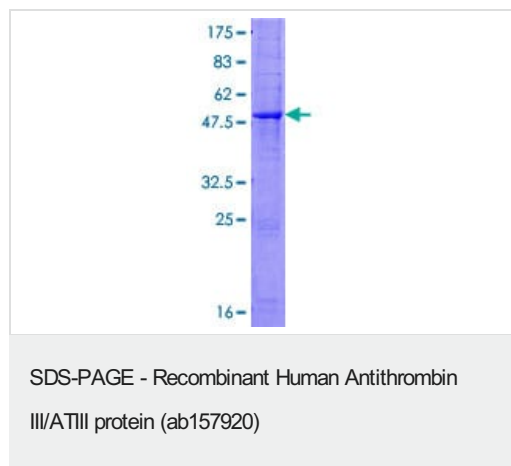
Post-translational modifications

Phosphorylation sites are present in the extracellular medium.

Cellular localization

Secreted > extracellular space.

Images



ab157920 on a 12.5% SDS-PAGE stained with Coomassie Blue.

Please note: All products are "FOR RESEARCH USE ONLY. NOT FOR USE IN DIAGNOSTIC PROCEDURES"

Our Abpromise to you: Quality guaranteed and expert technical support

- Replacement or refund for products not performing as stated on the datasheet
- Valid for 12 months from date of delivery
- Response to your inquiry within 24 hours

- We provide support in Chinese, English, French, German, Japanese and Spanish
- Extensive multi-media technical resources to help you
- We investigate all quality concerns to ensure our products perform to the highest standards

If the product does not perform as described on this datasheet, we will offer a refund or replacement. For full details of the Abpromise, please visit <https://www.abcam.com/abpromise> or contact our technical team.

Terms and conditions

- Guarantee only valid for products bought direct from Abcam or one of our authorized distributors