

Recombinant Human AP1B1 protein ab157866

1 Image

Description

Product name	Recombinant Human AP1B1 protein
Expression system	Wheat germ
Protein length	Full length protein
Animal free	No
Nature	Recombinant
Species	Human
Sequence	MTDSKYFTTTKKGEIFELKAELNSDKKEKKKEAVKKVIAS MTVGKDVSA FPDVVNCMQTDNLELKKLVYLYLMNYAKSQPDMAIMAVNT FVKDCEDPNP LIRALAVRTMGCIRVDKITEYLCEPLRKCLKDEDPYVRKTA AVCVAKLHD INAQLVEDQGFLDTLKDLSNPMVVANAVAALSEIAESH PSSNLLDLN PQSINKLLTALNECTEWGQIFILDCLANYMPKDDREAQSIC ERVTPRLSH ANSVVLSAVKVLKFMEMLSKDLDYYGTLLKKLAPPLVT LLSAEPELQY VALRNINLIVQKRPEILKHEMKVFFVKYNDPIYVKLEKLDIMI RLASQAN IAQVLAELKEYATEVDVDFVRKAVRAIGRCAIKVEQSAERC VSTLLDLIQ TKVNYVVQEANVIKDIRKYPNKYESVIATLCENLDSLDEP EARAAMW VGEYAERIDNADELLESFLEGFHDESTQVQLQLLTAMKLF LKKPTETQ ELVQQVLSLATQSDSNPDLRDRGYWRLSTDPVAAKEV VLAEKPLISE ETDLIEPTLLDELICYIGTLASVYHKPPSAFVEGGRGVVHKS LPPRTASS ESAESPETAPTGAPPGEQPDVIPAQGDLLGDLLNLDLGP PVSGPPLATSS VQMGAVDLLGGGLDSLIGGTNFVAPPTAAVPANLGAFIGS GLSDLFDLTS GVGTLSGSYVAPKAVWLPAMKAKGLEISGTFTRQVGSISM

DLQLTNKALQ
VMTDFAIQFNRSFGLAPAAPLQVHAPLSPNQTVESLPLS
TVGSVMKME
PLNNLQVAVKNNIDVFYFSTLYPLHILFVEDGKMDRQMFLA
TWKDIPNEN
EAQFQIRDCPLNAEAASSKLQSSNIFTVAKRNVEGQDMLY
QSLKLTNGIW
VLAELRIQPGNPSTLSLKCRAPEVSQHVYQAYETILKN

Amino acids 1 to 939
Tags GST tag N-Terminus

Specifications

Our **Abpromise guarantee** covers the use of **ab157866** in the following tested applications.

The application notes include recommended starting dilutions; optimal dilutions/concentrations should be determined by the end user.

Applications Western blot
ELISA
Form Liquid

Additional notes

Preparation and Storage

Stability and Storage Shipped on dry ice. Upon delivery aliquot and store at -80°C. Avoid freeze / thaw cycles.
pH: 8.00
Constituents: 0.31% Glutathione, 0.79% Tris HCl

General Info

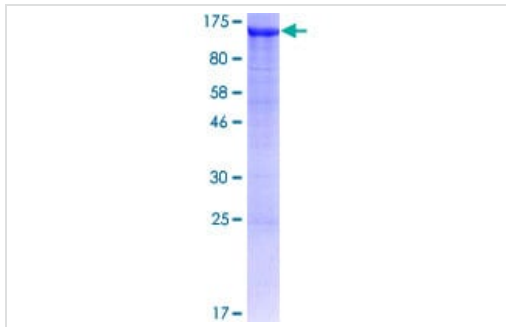
Function Subunit of clathrin-associated adaptor protein complex 1 that plays a role in protein sorting in the late-Golgi/trans-Golgi network (TGN) and/or endosomes. The AP complexes mediate both the recruitment of clathrin to membranes and the recognition of sorting signals within the cytosolic tails of transmembrane cargo molecules.

Tissue specificity Widely expressed.

Sequence similarities Belongs to the adaptor complexes large subunit family.

Cellular localization Golgi apparatus. Cytoplasmic vesicle, clathrin-coated vesicle membrane. Component of the coat surrounding the cytoplasmic face of coated vesicles located at the Golgi complex.

Images



SDS-PAGE - Recombinant Human AP1B1 protein
(ab157866)

ab157866 on a 12.5% SDS-PAGE stained with Coomassie Blue.

Please note: All products are "FOR RESEARCH USE ONLY. NOT FOR USE IN DIAGNOSTIC PROCEDURES"

Our Abpromise to you: Quality guaranteed and expert technical support

- Replacement or refund for products not performing as stated on the datasheet
- Valid for 12 months from date of delivery
- Response to your inquiry within 24 hours
- We provide support in Chinese, English, French, German, Japanese and Spanish
- Extensive multi-media technical resources to help you
- We investigate all quality concerns to ensure our products perform to the highest standards

If the product does not perform as described on this datasheet, we will offer a refund or replacement. For full details of the Abpromise, please visit <https://www.abcam.com/abpromise> or contact our technical team.

Terms and conditions

- Guarantee only valid for products bought direct from Abcam or one of our authorized distributors