

Product datasheet

Recombinant Human APMAP protein ab132786

1 Image

Description

| | | |
|-----------------------------------|---|--|
| Product name | Recombinant Human APMAP protein | |
| Expression system | Wheat germ | |
| Accession | <u>Q9HDC9</u> | |
| Protein length | Full length protein | |
| Animal free | No | |
| Nature | Recombinant | |
| Species | Human | |
| Sequence | <p>MSEADGLRQRRPLRPQVVTDGQGAPEAKDGSSFSGRV FRVTFMLAVSL TVPLLGAMMLLESPIDPQPLSFKEPPLLLGVLHPNTKLRQ AERLFENQLV GPESIAHIGDVMFTGTADGRVVKLENGEIETIARFGSGPCK TRDDEPVCG RPLGIRAGPNGTLFVADAYKGLFEVNPWKREVKLLLSSET PIEGKNMSFV NDLTVTQDGRKIYFTDSSSKWQRDYLLLVMEGTDDGRL EYDVTREVK VLLDQLRFPNGVQLSPAEDFVLVAETTMARIRRVVSGLM KGGADLFVEN MPGFDPNIRPSSSGGYWVGMSTIRPNPGFSMLDFLSE WIKRMIFKLFS QETVMKFVPRYSLVLELSDSGAFRRSLHDPDGLVATYISE VHEHDGHLYLGSFRSPFLCRLSLQAV</p> | |
| Predicted molecular weight | 73 kDa including tags | |
| Amino acids | 1 to 416 | |

Specifications

Our **Abpromise guarantee** covers the use of **ab132786** in the following tested applications.

The application notes include recommended starting dilutions; optimal dilutions/concentrations should be determined by the end user.

| | |
|---------------------|----------|
| Applications | SDS-PAGE |
| | ELISA |

Western blot

Form Liquid

Additional notes

Preparation and Storage

Stability and Storage Shipped on dry ice. Upon delivery aliquot and store at -80°C. Avoid freeze / thaw cycles.
pH: 8.00
Constituents: 0.31% Glutathione, 0.79% Tris HCl

General Info

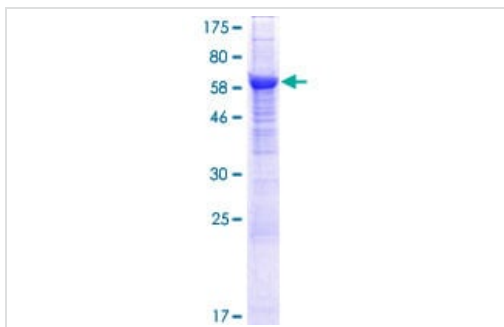
Function Exhibits strong arylesterase activity with beta-naphthyl acetate and phenyl acetate. May play a role in adipocyte differentiation.

Tissue specificity Liver, glomerular and tubular structures of the kidney, endothelial cells, arterial wall and pancreatic islets of Langerhans (at protein level). Found ubiquitously in adult as well as in embryonic tissues. In adult tissue, the highest expression is found in the liver, placenta and heart. Found on the cell surface of monocytes. In embryonic tissue, the highest expression levels is found in the liver and the kidney.

Sequence similarities Belongs to the strictosidine synthase family.

Cellular localization Membrane.

Images



12.5% SDS-PAGE analysis of ab132786 stained with Coomassie Blue.

SDS-PAGE - Recombinant Human APMAP protein
(ab132786)

Please note: All products are "FOR RESEARCH USE ONLY. NOT FOR USE IN DIAGNOSTIC PROCEDURES"

Our Abpromise to you: Quality guaranteed and expert technical support

- Replacement or refund for products not performing as stated on the datasheet
- Valid for 12 months from date of delivery

- Response to your inquiry within 24 hours
- We provide support in Chinese, English, French, German, Japanese and Spanish
- Extensive multi-media technical resources to help you
- We investigate all quality concerns to ensure our products perform to the highest standards

If the product does not perform as described on this datasheet, we will offer a refund or replacement. For full details of the Abpromise, please visit <https://www.abcam.com/abpromise> or contact our technical team.

Terms and conditions

- Guarantee only valid for products bought direct from Abcam or one of our authorized distributors