

Recombinant Human Arc protein ab140728

1 Image

Description	
Product name	Recombinant Human Arc protein
Purity	> 90 % SDS-PAGE. ab140728 was purified using conventional chromatography techniques.
Expression system	Escherichia coli
Accession	<u>Q7LC44</u>
Protein length	Full length protein
Animal free	No
Nature	Recombinant
Species	Human
Sequence	MGSSHHHHHHSSGLVPRGSHMELDHRTSGGLHAYPGPR GGQVAKPNVILQ IGKCRAEMLEHVRRTHRLLAEVSKQVERELKGLHRSVG KLESNLDGYVP TSDSQRWKKSIAKLCRCQETIANLERWVKREMHVWREV FYRLERWADRL ESTGGKYPVGSESARHTVSVGVGGPESYCHEADGYDYTE SPYAITPPPA GELPGQEPAAEQYQPWVPGEDGQSPGVDTQIFEDPR EFLSHLEEYLRQ VGGSEEWLSQIQNHMNGPAKKWWEFKQGSVKNWVEF KKEFLQYSEGTL REAIQRELDLPQKQGEPLDQFLWRKRDLYQTLVDADEE EIIQYVVGTLQ PKLKRFLRHPLPKTLEQLIQRGMEVQDDLEQAAEPAGPHL PVEDEAETLT PAPNSESVASDRTQPE
Predicted molecular weight	47 kDa including tags
Amino acids	1 to 396
Tags	His tag N-Terminus

Specifications

Our **Abpromise guarantee** covers the use of **ab140728** in the following tested applications.

The application notes include recommended starting dilutions; optimal dilutions/concentrations should be determined by the end user.

Applications	SDS-PAGE
	Mass Spectrometry
Mass spectrometry	MALDI-TOF
Form	Liquid

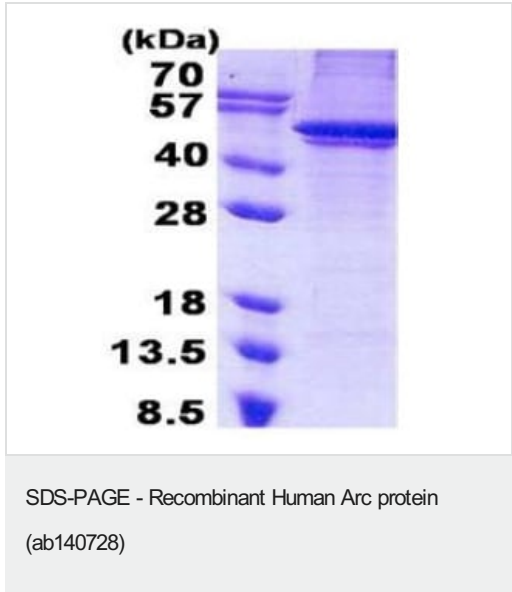
Preparation and Storage

Stability and Storage	Shipped at 4°C. Store at +4°C short term (1-2 weeks). Upon delivery aliquot. Store at -20°C or -80°C. Avoid freeze / thaw cycle.
	pH: 8.00
	Constituents: 0.02% DTT, 0.32% Tris HCl, 10% Glycerol (glycerin, glycerine), 0.88% Sodium chloride

General Info

Function	Required for consolidation of synaptic plasticity as well as formation of long-term memory. Regulates endocytosis of AMPA receptors in response to synaptic activity. Required for homeostatic synaptic scaling of AMPA receptors (By similarity). Plays a role in the regulation of cell morphology and cytoskeletal organization. Required in the stress fiber dynamics and cell migration.
Sequence similarities	Belongs to the ARC/ARG3.1 family.
Cellular localization	Cytoplasm > cytoskeleton. Endosome. Cytoplasmic vesicle > secretory vesicle > acrosome. Cell junction > synapse > postsynaptic cell membrane > postsynaptic density. Cell projection > dendrite. Cell projection > dendritic spine. Cell junction > synapse. Associated with the cell cortex of neuronal soma and dendrites. Enriched in postsynaptic density of dendritic spines. Associated with the sperm tail (By similarity). Enriched on the plasma membrane.

Images



15% SDS-PAGE analysis of ab140728 (3µg)..

Please note: All products are "FOR RESEARCH USE ONLY. NOT FOR USE IN DIAGNOSTIC PROCEDURES"

Our Abpromise to you: Quality guaranteed and expert technical support

- Replacement or refund for products not performing as stated on the datasheet
- Valid for 12 months from date of delivery
- Response to your inquiry within 24 hours

- We provide support in Chinese, English, French, German, Japanese and Spanish
- Extensive multi-media technical resources to help you
- We investigate all quality concerns to ensure our products perform to the highest standards

If the product does not perform as described on this datasheet, we will offer a refund or replacement. For full details of the Abpromise, please visit <https://www.abcam.com/abpromise> or contact our technical team.

Terms and conditions

- Guarantee only valid for products bought direct from Abcam or one of our authorized distributors