

Product datasheet

Recombinant Human ATG14L protein (Tagged) ab225977

[1 Image](#)

Description

Product name	Recombinant Human ATG14L protein (Tagged)
Purity	> 90 % SDS-PAGE.
Expression system	Escherichia coli
Accession	<u>Q6ZNE5</u>
Protein length	Full length protein
Animal free	No
Nature	Recombinant
Species	Human
Sequence	MASPSGKGARALEAPGCGPRPLARDLVDSVDDAEGLYV AVERCPLCNTTR RRLTCAKCVQSGDFVYFDGRDRERFIDKKERLSRLKSKQ EEFQKEVLKAM EGKWITDQLRWKIMSCKMRIEQLKQTICKGNEEMEKNSEG LLKTKEKNQK LYSRAQRHQEKKEKIQRHNRKLGDLVEKKTIDLRSHYERLA NLRRSHILE LTSVIFPIEEVKTGVRDPADVSSSESDSAMTSSTVSKLAEA RRTTYLSGRW VCDDHNGDTSISITGPWISLPNNGDYSAYYSWVEEKTTQ GPDMEQSNPA YTISAALCYATQLVNILSHILDVNLPKCLCNSEFCGENLSKQ KFTRAVKK LNANILYLCFSQHVNLQPLHLRNLMLVSPSSEHLGR SGPFVVRAD LEESMEFVDPGVAGESDESGDERVSDEETDLGTDWENL PSPRCDIPSQS VEVSQSQSTQASPPASSSAGGMISAAAASVTSWFKAYT GHR
Predicted molecular weight	60 kDa including tags
Amino acids	1 to 492
Tags	His tag N-Terminus

Additional sequence information 10xHis tag at the N-terminus and a Myc tag at the C-terminus.

Specifications

Our **Abpromise guarantee** covers the use of **ab225977** in the following tested applications.

The application notes include recommended starting dilutions; optimal dilutions/concentrations should be determined by the end user.

Applications SDS-PAGE

Form Liquid

Preparation and Storage

Stability and Storage Shipped at 4°C. Upon delivery aliquot. Store at -20°C or -80°C. Avoid freeze / thaw cycle.

pH: 7.2

Constituents: 50% Glycerol (glycerin, glycerine), Tris buffer

General Info

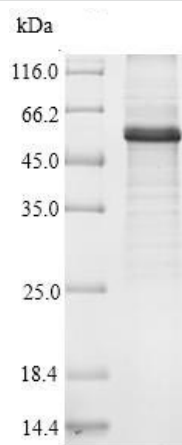
Function Required for both basal and inducible autophagy. Plays a role in autophagosome formation and MAP1LC3/LC3 conjugation to phosphatidylethanolamine. Promotes BECN1 translocation from the trans-Golgi network to autophagosomes. Enhances PIK3C3 activity in a BECN1-dependent manner.

Sequence similarities Belongs to the Barkor family.

Domain The coiled-coil domain is required for BECN1- and PIK3C3-binding and for autophagy.

Cellular localization Cytoplasm. Endoplasmic reticulum. Cytosolic under nutrient-rich conditions. Following autophagy stimuli, such as starvation or rapamycin induction, predominantly detected in cytoplasmic foci, identified as isolation membranes and autophagosomes.

Images



(Tris-Glycine gel) Discontinuous SDS-PAGE (reduced) analysis of ab225977 with 5% enrichment gel and 15% separation gel.

SDS-PAGE - Recombinant Human ATG14L protein
(Tagged) (ab225977)

Please note: All products are "FOR RESEARCH USE ONLY. NOT FOR USE IN DIAGNOSTIC PROCEDURES"

Our Abpromise to you: Quality guaranteed and expert technical support

- Replacement or refund for products not performing as stated on the datasheet
- Valid for 12 months from date of delivery
- Response to your inquiry within 24 hours

- We provide support in Chinese, English, French, German, Japanese and Spanish
- Extensive multi-media technical resources to help you
- We investigate all quality concerns to ensure our products perform to the highest standards

If the product does not perform as described on this datasheet, we will offer a refund or replacement. For full details of the Abpromise, please visit <https://www.abcam.com/abpromise> or contact our technical team.

Terms and conditions

- Guarantee only valid for products bought direct from Abcam or one of our authorized distributors