

Recombinant Human ATP1A3 protein ab152203

[1 Image](#)

Description

Product name	Recombinant Human ATP1A3 protein
Expression system	Wheat germ
Accession	<u>P13637</u>
Protein length	Full length protein
Animal free	No
Nature	Recombinant
Species	Human

Sequence

MGDKKDDKDSPKKNKGKERRDLDDLKKEVAMTEHKMS
VEEVCRKYNTDCV
QGLTHSKAQEILARDGPNALTPPPTPEWVKFCRQLFGG
FSILLWIGAIL
CFLAYGIQAGTEDDPSGDNLVYLGIVLAAVVIITGCFSYYQEA
KSSKIMES
FKNMVPQQALVIREGEKMQVNAAEEVVVGDVLEIKGGDRV
PADLRISAHG
CKVDNSSLTGESEPTQTRSPDCTHDNPLETRNITFFSTNCV
EGTARGVVVA
TGDRTVMGRIATLASGLEVGKTPAIEIEHFIQLITGVAVFLG
VSFFILS
LILGYTWLEAVIFLIGIVANVPEGLLATVTVCLTLTAKRMARK
NCLVKN
LEAVETLGSTSTICSDKTGTLTQNRMTVAHMMWFDNQIHEA
DTTEDQSGTS
FDKSSHTWVALSHIAGLCNRAVFKGGQDNIPVLKRDVAG
DASESALLKCI
ELSSGSVKLMRERNKKVAEIPFNSTNKYQLSIHETEDPND
NRYLLVMKGA
PERILDRCSTILLQGKEQPLDEEMKEAFQAYLELGGLE
RVLGFCHYYL
PEEQFPKGFADFDCDDVNFITDNLCFVGLMSMIDPPRAAV
PDAVGKCRSAG
IKVIMVTGDHPITAKAIAKGVGIISEGNETVEDIAARLNIPVSQ
VNPRDA
KACVIHGTDLKDFTSEQIDEILQNHTEMFARTSPQQKLIVE
GCQRQGA

MAVTGDGVNDSPALKKADIGVAMGIAGSDVSKQAADMIL
 LDDNFASVT
 GVEEGRILFDNLKKSIAAYTLTSNIPEITPFLLFIMANIPLPLGTI
 TILCI
 DLGTDMPAISLAYEAAESDIMKRQPRNPRTDKLVNERLIS
 MAYGQIGMI
 QALGGFFSYFVILAENGFLPGNLVGIRLNWDDRTVNDLED
 SYGQQWTYEQ
 RKVVEFTCHTAFFVSIVVQWADLIICKTRRNSVFQQGMK
 NKILIFGLFE
 ETALAAFLSYCPGMDVALRMYPLKPSWWFCAPYSFLIFV
 YDEIRKLILR RNPGGWVEKETYY

Predicted molecular weight 138 kDa including tags
Amino acids 1 to 1013

Specifications

Our **Abpromise guarantee** covers the use of **ab152203** in the following tested applications.

The application notes include recommended starting dilutions; optimal dilutions/concentrations should be determined by the end user.

Applications ELISA
 SDS-PAGE
 Western blot

Form Liquid

Additional notes This product was previously labelled as alpha 3 Sodium Potassium ATPase.

Preparation and Storage

Stability and Storage Shipped on dry ice. Upon delivery aliquot and store at -80°C. Avoid freeze / thaw cycles.
 pH: 8.00
 Constituents: 0.31% Glutathione, 0.79% Tris HCl

General Info

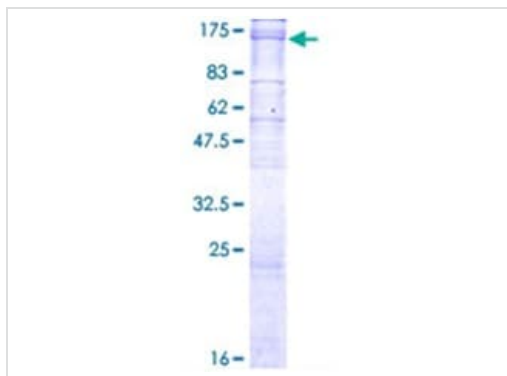
Function This is the catalytic component of the active enzyme, which catalyzes the hydrolysis of ATP coupled with the exchange of sodium and potassium ions across the plasma membrane. This action creates the electrochemical gradient of sodium and potassium ions, providing the energy for active transport of various nutrients.

Involvement in disease Dystonia 12
 Alternating hemiplegia of childhood 2
 Cerebellar ataxia, areflexia, pes cavus, optic atrophy, and sensorineural hearing loss

Sequence similarities Belongs to the cation transport ATPase (P-type) (TC 3.A.3) family. Type IIC subfamily.

Cellular localization Cell membrane.

Images



12.5% SDS-PAGE analysis of ab152203 stained with Coomassie Blue.

SDS-PAGE - Recombinant Human ATP1A3 protein
(ab152203)

Please note: All products are "FOR RESEARCH USE ONLY. NOT FOR USE IN DIAGNOSTIC PROCEDURES"

Our Abpromise to you: Quality guaranteed and expert technical support

- Replacement or refund for products not performing as stated on the datasheet
- Valid for 12 months from date of delivery
- Response to your inquiry within 24 hours
- We provide support in Chinese, English, French, German, Japanese and Spanish
- Extensive multi-media technical resources to help you
- We investigate all quality concerns to ensure our products perform to the highest standards

If the product does not perform as described on this datasheet, we will offer a refund or replacement. For full details of the Abpromise, please visit <https://www.abcam.com/abpromise> or contact our technical team.

Terms and conditions

- Guarantee only valid for products bought direct from Abcam or one of our authorized distributors