

Recombinant human Axl protein ab167950

5 Images

Description	
Product name	Recombinant human Axl protein
Biological activity	The specific activity of ab167950 was determined to be 3 nmol/min/mg.
Purity	> 85 % Densitometry. Affinity purified.
Expression system	Baculovirus infected Sf9 cells
Accession	<b><u>P30530</u></b>
Protein length	Protein fragment
Animal free	No
Nature	Recombinant
Species	Human
Sequence	HRRKKETRYGEVFEPTVERGELVVRYCVRKSYSRRTEAT LNSLGISEEL KEKL RDVMVDRHKVALGKTLGEGEFGAVMEGQLNQDDSI LKVAVKTMKIA ICTRSELEDFLSEAVCMKEF DHPNVMRLIGVCFQG SERESFPAPVVIL PFMKHGD LHSFLLYSRLGDQPVYLPTQMLVKFMADIASG MEYLSTKRFIH RDLAARNCMLNENMSVCVADFGLSKKIYNGDYRQGRIAK MP VKWIAI ESLADRVYTSKSDVWSFGVTMWEIATRGQTPYPGVENSEI YDYLRQGNRL KQPADCLDGLYALMSRCWELNPQDRPSFTELREDLENTL KALPPAQEPDE ILYVNMDEGGGYPE PPGAAGGADPPTQDPDKDSCSCLTAAEVHPAGRY VLC PSTTPSPAQPADRGSPAAPGQEDGA
Predicted molecular weight	76 kDa including tags
Amino acids	473 to 894
Tags	GST tag N-Terminus

Specifications

Our **Abpromise guarantee** covers the use of **ab167950** in the following tested applications.

The application notes include recommended starting dilutions; optimal dilutions/concentrations should be determined by the end user.

## Applications

Western blot  
Functional Studies  
SDS-PAGE

## Form

Liquid

## Preparation and Storage

### Stability and Storage

Shipped on dry ice. Upon delivery aliquot and store at -80°C. Avoid freeze / thaw cycles.

pH: 7.50

Constituents: 0.31% Glutathione, 0.002% PMSF, 0.004% DTT, 0.79% Tris HCl, 0.003% EDTA, 25% Glycerol (glycerin, glycerine), 0.88% Sodium chloride

This product is an active protein and may elicit a biological response in vivo, handle with caution.

## General Info

### Function

May function as a signal transducer between specific cell types of mesodermal origin. In case of filovirus infection, seems to function as a cell entry factor.

### Tissue specificity

Highly expressed in metastatic colon tumors. Expressed in primary colon tumors. Weakly expressed in normal colon tissue.

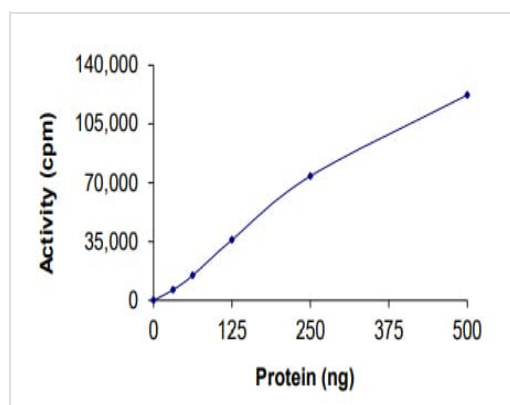
### Sequence similarities

Belongs to the protein kinase superfamily. Tyr protein kinase family. AXL/UFO subfamily.  
Contains 2 fibronectin type-III domains.  
Contains 2 Ig-like C2-type (immunoglobulin-like) domains.  
Contains 1 protein kinase domain.

### Cellular localization

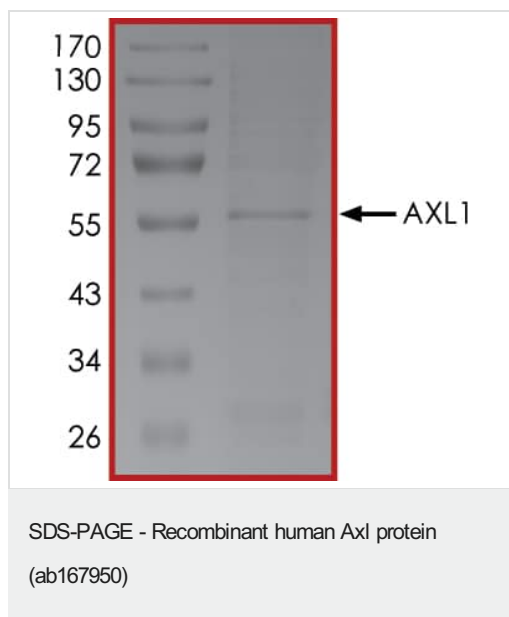
Membrane.

## Images

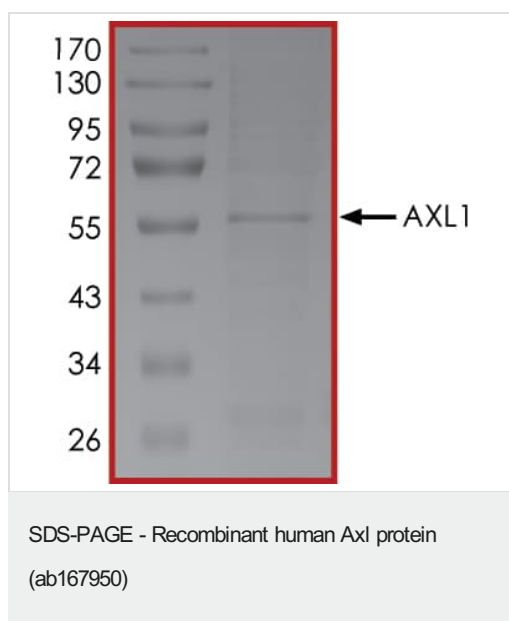


Functional Studies - Recombinant human Axl protein (ab167950)

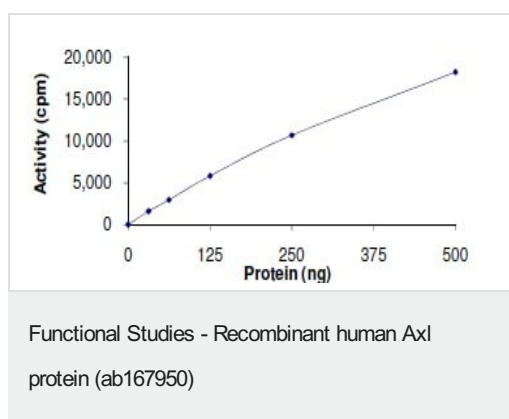
The specific activity of Axl (ab167950) was determined to be 3.5 nmol/min/mg as per activity assay protocol



SDS PAGE analysis of ab167950

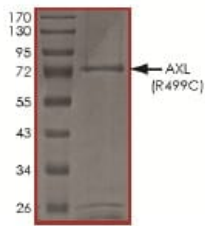


SDS PAGE analysis of ab167950



The specific activity of ab167950 was determined to be 3  
nmol/min/mg.

### SDS Page analysis of ab167950



SDS-PAGE - Recombinant human Axl protein  
(ab167950)

**Please note:** All products are "FOR RESEARCH USE ONLY. NOT FOR USE IN DIAGNOSTIC PROCEDURES"

### Our Abpromise to you: Quality guaranteed and expert technical support

---

- Replacement or refund for products not performing as stated on the datasheet
- Valid for 12 months from date of delivery
- Response to your inquiry within 24 hours
- We provide support in Chinese, English, French, German, Japanese and Spanish
- Extensive multi-media technical resources to help you
- We investigate all quality concerns to ensure our products perform to the highest standards

If the product does not perform as described on this datasheet, we will offer a refund or replacement. For full details of the Abpromise, please visit <https://www.abcam.com/abpromise> or contact our technical team.

### Terms and conditions

---

- Guarantee only valid for products bought direct from Abcam or one of our authorized distributors