

Product datasheet

Recombinant Human Bax protein ab173026

[3 References](#) [1 Image](#)

Description

Product name	Recombinant Human Bax protein
Purity	> 95 % SDS-PAGE. Greater than 95% as determined by SEC-HPLC and reducing SDS-PAGE.
Endotoxin level	< 1.000 Eu/μg
Expression system	Escherichia coli
Accession	<u>Q07812</u>
Protein length	Protein fragment
Animal free	No
Nature	Recombinant
Species	Human
Sequence	MGSSHHHHHHSSGLVPRGSHMDGSGEQPRGGGPTSSE QIMKTGALLLQGF IQDRAGRMGGEAPELALDPVPQDASTKKLSECLKRIGDEL DSNMELQRFI AAVDTDSPREVFFRVAADMFSDFGNFNWGRVVALFYFAS KLVLKALCTKVP ELIRTMGWTLDFLRERLLGWIQDQGGWDGLLSYFGTPTW QLEHHHHHHH
Predicted molecular weight	22 kDa including tags
Amino acids	1 to 171
Tags	His tag C-Terminus , His tag N-Terminus

Specifications

Our **Abpromise guarantee** covers the use of **ab173026** in the following tested applications.

The application notes include recommended starting dilutions; optimal dilutions/concentrations should be determined by the end user.

Applications	HPLC
	SDS-PAGE

Form	Liquid
-------------	--------

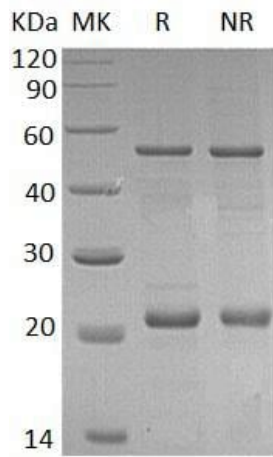
Preparation and Storage

Stability and Storage	<p>Shipped on Dry Ice. Store at -20°C or -80°C. Avoid freeze / thaw cycle.</p> <p>pH: 7.40</p> <p>Constituents: 64% Sodium chloride, 3% Sodium phosphate monobasic, monohydrate, 28% disodium;hydrogen phosphate;dodecahydrate</p> <p>Lyophilized from a 0.2 µm filtered solution</p>
------------------------------	---

General Info

Function	Accelerates programmed cell death by binding to, and antagonizing the apoptosis repressor BCL2 or its adenovirus homolog E1B 19k protein. Under stress conditions, undergoes a conformation change that causes translocation to the mitochondrion membrane, leading to the release of cytochrome c that then triggers apoptosis. Promotes activation of CASP3, and thereby apoptosis.
Tissue specificity	Expressed in a wide variety of tissues. Isoform Psi is found in glial tumors. Isoform Alpha is expressed in spleen, breast, ovary, testis, colon and brain, and at low levels in skin and lung. Isoform Sigma is expressed in spleen, breast, ovary, testis, lung, colon, brain and at low levels in skin. Isoform Alpha and isoform Sigma are expressed in pro-myelocytic leukemia, histiocytic lymphoma, Burkitt's lymphoma, T-cell lymphoma, lymphoblastic leukemia, breast adenocarcinoma, ovary adenocarcinoma, prostate carcinoma, prostate adenocarcinoma, lung carcinoma, epidermoid carcinoma, small cell lung carcinoma and colon adenocarcinoma cell lines.
Sequence similarities	Belongs to the Bcl-2 family.
Domain	Intact BH3 motif is required by BIK, BID, BAK, BAD and BAX for their pro-apoptotic activity and for their interaction with anti-apoptotic members of the Bcl-2 family.
Cellular localization	Cytoplasm and Mitochondrion membrane. Cytoplasm. Colocalizes with 14-3-3 proteins in the cytoplasm. Under stress conditions, undergoes a conformation change that causes release from JNK-phosphorylated 14-3-3 proteins and translocation to the mitochondrion membrane.

Images



SDS-PAGE analysis of ab173026.

SDS-PAGE - Recombinant Human Bax protein
(ab173026)

Please note: All products are "FOR RESEARCH USE ONLY. NOT FOR USE IN DIAGNOSTIC PROCEDURES"

Our Abpromise to you: Quality guaranteed and expert technical support

- Replacement or refund for products not performing as stated on the datasheet
- Valid for 12 months from date of delivery
- Response to your inquiry within 24 hours
- We provide support in Chinese, English, French, German, Japanese and Spanish
- Extensive multi-media technical resources to help you
- We investigate all quality concerns to ensure our products perform to the highest standards

If the product does not perform as described on this datasheet, we will offer a refund or replacement. For full details of the Abpromise, please visit <https://www.abcam.com/abpromise> or contact our technical team.

Terms and conditions

- Guarantee only valid for products bought direct from Abcam or one of our authorized distributors