

## Product datasheet

# Recombinant Human Bcl 7A protein ab139229

1 Image

### Description

---

<b>Product name</b>	Recombinant Human Bcl 7A protein
<b>Purity</b>	> 85 % SDS-PAGE. ab139229 is purified using conventional chromatography techniques.
<b>Expression system</b>	Escherichia coli
<b>Accession</b>	<b><u>Q4VC05</u></b>
<b>Protein length</b>	Full length protein
<b>Animal free</b>	No
<b>Nature</b>	Recombinant
<b>Species</b>	Human
<b>Sequence</b>	MGSSHHHHHHSSGLVPRGSHMGSMGRSVRAETRSRAK DDIKRVMAAIEK VRKWEKKWVTVGDTSLRIYKWVPVTEPKVDDKNKNNKKK GKDEKCGSEVTT PENSSSPGMMDMHDDNSNQSSIADASPIKQENSSNSSP APEPNSAVPSDG TEAKVDEAQADGKEHPGAEDASDEQNSQSSMEHSMNS SEKVDRQPSGDSG LAAETSAISQDLEGVPPSKMKLEASQQNSEEM
<b>Predicted molecular weight</b>	25 kDa including tags
<b>Amino acids</b>	1 to 210
<b>Tags</b>	His tag N-Terminus

### Specifications

---

Our **Abpromise guarantee** covers the use of **ab139229** in the following tested applications.

The application notes include recommended starting dilutions; optimal dilutions/concentrations should be determined by the end user.

<b>Applications</b>	SDS-PAGE Mass Spectrometry
<b>Mass spectrometry</b>	MALDI-TOF
<b>Form</b>	Liquid

## Preparation and Storage

---

### Stability and Storage

Shipped at 4°C. Store at +4°C short term (1-2 weeks). Upon delivery aliquot. Store at -20°C or -80°C. Avoid freeze / thaw cycle.

pH: 8.00

Constituents: 0.02% DTT, 0.32% Tris HCl, 0.06% EDTA, 10% Glycerol (glycerin, glycerine), 0.88% Sodium chloride

## General Info

---

### Involvement in disease

Note=Chromosomal aberrations involving BCL7A may be a cause of B-cell non-Hodgkin lymphoma. Three-way translocation t(8;14;12)(q24.1;q32.3;q24.1) with MYC and with immunoglobulin gene regions.

### Sequence similarities

Belongs to the BCL7 family.

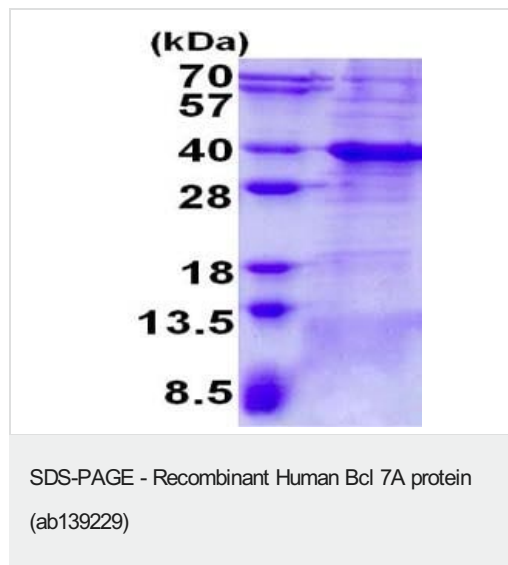
### Post-translational modifications

Phosphorylated upon DNA damage, probably by ATM or ATR.

---

## Images

---



15% SDS-PAGE analysis of 3 µg ab139229.

**Please note:** All products are "FOR RESEARCH USE ONLY. NOT FOR USE IN DIAGNOSTIC PROCEDURES"

## Our Abpromise to you: Quality guaranteed and expert technical support

---

- Replacement or refund for products not performing as stated on the datasheet
- Valid for 12 months from date of delivery
- Response to your inquiry within 24 hours
- We provide support in Chinese, English, French, German, Japanese and Spanish
- Extensive multi-media technical resources to help you
- We investigate all quality concerns to ensure our products perform to the highest standards

If the product does not perform as described on this datasheet, we will offer a refund or replacement. For full details of the Abpromise, please visit <https://www.abcam.com/abpromise> or contact our technical team.

### **Terms and conditions**

---

- Guarantee only valid for products bought direct from Abcam or one of our authorized distributors