

## Product datasheet

# Recombinant Human Beclin 1 protein ab131770

[1 Image](#)

### Description

---

<b>Product name</b>	Recombinant Human Beclin 1 protein
<b>Expression system</b>	Wheat germ
<b>Accession</b>	<u><a href="#">Q14457</a></u>
<b>Protein length</b>	Full length protein
<b>Animal free</b>	No
<b>Nature</b>	Recombinant
<b>Species</b>	Human
<b>Sequence</b>	MEGSKTSNNSTMQVSFVCQRCSQPLKLDTSFKILDRVTIQ ELTAPLLTTA QAKPGETQEEETNSGEEPFIETPRQDGVSRRFIPPARMM STESANSFTLI GEASDGGTMENLSRRLKVTGDLFDIMSGQTDVDHPLCEE CTDTLLDQLDT QLNVTENECQNYKRCLILEQMNEEDDSEQLQMELKELAL EEERLIQELED VEKNRKVAENLEKVQAEAERLDQEEAQYQREYSEFKRQ QLELDDELKSV ENQMRYAQTQLDKLKKTNVFNATFHWHSQGFGTINNFRL GRLPSVPVEW NEINAAWGQTVLLLHALANKMGLKFQRYRLVPYGNHSYLE SLTDKSKELP LYCSGGLRFFWDNKFHAMVAFLDCVQQFKEEVEKGET RFCLPYRMDVEK GKIEDTGGSGGSYSIKTQFNSEEQWTKALKFMLTNLKWGL AWVSSQFYNK
<b>Predicted molecular weight</b>	78 kDa including tags
<b>Amino acids</b>	1 to 450

### Specifications

---

Our **Abpromise guarantee** covers the use of **ab131770** in the following tested applications.

The application notes include recommended starting dilutions; optimal dilutions/concentrations should be determined by the end user.

**Applications** SDS-PAGE

	Western blot
	ELISA
<b>Form</b>	Liquid
<b>Additional notes</b>	

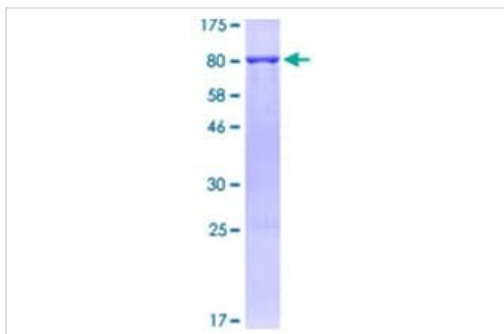
## Preparation and Storage

<b>Stability and Storage</b>	Shipped on dry ice. Upon delivery aliquot and store at -80°C. Avoid freeze / thaw cycles. pH: 8.00 Constituents: 0.31% Glutathione, 0.79% Tris HCl
------------------------------	--

## General Info

<b>Function</b>	Plays a central role in autophagy (By similarity). May play a role in antiviral host defense. Protects against infection by a neurovirulent strain of Sindbis virus.
<b>Tissue specificity</b>	Ubiquitous.
<b>Sequence similarities</b>	Belongs to the beclin family.
<b>Cellular localization</b>	Golgi apparatus > trans-Golgi network membrane. Interaction with ATG14 promotes translocation to autophagosomes. Expressed in dendrites and cell bodies of cerebellar Purkinje cells.

## Images



12.5% SDS-PAGE analysis of ab131770 stained with Coomassie Blue.

SDS-PAGE - Recombinant Human Beclin 1 protein  
(ab131770)

**Please note:** All products are "FOR RESEARCH USE ONLY. NOT FOR USE IN DIAGNOSTIC PROCEDURES"

## Our Abpromise to you: Quality guaranteed and expert technical support

- Replacement or refund for products not performing as stated on the datasheet
- Valid for 12 months from date of delivery
- Response to your inquiry within 24 hours

- We provide support in Chinese, English, French, German, Japanese and Spanish
- Extensive multi-media technical resources to help you
- We investigate all quality concerns to ensure our products perform to the highest standards

If the product does not perform as described on this datasheet, we will offer a refund or replacement. For full details of the Abpromise, please visit <https://www.abcam.com/abpromise> or contact our technical team.

### **Terms and conditions**

---

- Guarantee only valid for products bought direct from Abcam or one of our authorized distributors