

Product datasheet

Recombinant Human beta-cardiac myosin heavy chain protein ab112326

[1 Image](#)

Description

Product name	Recombinant Human beta-cardiac myosin heavy chain protein
Expression system	Wheat germ
Accession	<u>P12883</u>
Protein length	Protein fragment
Animal free	No
Nature	Recombinant
Species	Human
Sequence	MGDSEMAVFGAAAPYLKSEKERLEAQTRPFDLKKDVF VPDDKQEFVKAK IVSREGGKVTAEYEGKTVTVKEDQVMQQNPPKFDKIED MAMLTFLHEPA VLYNLKDRY
Predicted molecular weight	38 kDa including tags
Amino acids	1 to 109
Tags	GST tag N-Terminus

Specifications

Our **Abpromise guarantee** covers the use of **ab112326** in the following tested applications.

The application notes include recommended starting dilutions; optimal dilutions/concentrations should be determined by the end user.

Applications	ELISA Western blot SDS-PAGE
Form	Liquid

Preparation and Storage

Stability and Storage	Shipped on dry ice. Upon delivery aliquot and store at -80°C. Avoid freeze / thaw cycles. pH: 8.00 Constituents: 0.31% Glutathione, 0.79% Tris HCl
------------------------------	--

General Info

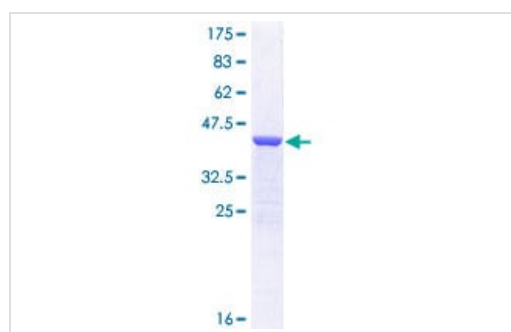
Relevance

Muscle myosin is a hexameric protein that consists of 2 heavy chain subunits (MHC), 2 alkali light chain subunits (MLC) and 2 regulatory light chain subunits (MLC-2). Cardiac MHC exists as two isoforms in humans, alpha-cardiac MHC and beta-cardiac MHC. These two isoforms are expressed in different amounts in the human heart. During normal physiology, beta-cardiac MHC is the predominant form, with the alpha-isoform contributing around only 7% of the total MHC. Mutations of the MHC genes are associated with several different dilated and hypertrophic cardiomyopathies.

Cellular localization

Thick filaments of the myofibrils.

Images



ab112326 analysed on a 12.5% SDS-PAGE gel stained with Coomassie Blue.

SDS-PAGE - Recombinant Human beta-cardiac myosin heavy chain protein (ab112326)

Please note: All products are "FOR RESEARCH USE ONLY. NOT FOR USE IN DIAGNOSTIC PROCEDURES"

Our Abpromise to you: Quality guaranteed and expert technical support

- Replacement or refund for products not performing as stated on the datasheet
- Valid for 12 months from date of delivery
- Response to your inquiry within 24 hours
- We provide support in Chinese, English, French, German, Japanese and Spanish
- Extensive multi-media technical resources to help you
- We investigate all quality concerns to ensure our products perform to the highest standards

If the product does not perform as described on this datasheet, we will offer a refund or replacement. For full details of the Abpromise, please visit <https://www.abcam.com/abpromise> or contact our technical team.

Terms and conditions

- Guarantee only valid for products bought direct from Abcam or one of our authorized distributors