

Recombinant Human Bim protein ab112387

1 References 1 Image

Description

Product name	Recombinant Human Bim protein		
Expression system	Wheat germ		
Accession	<u><b>O43521</b></u>		
Protein length	Full length protein		
Animal free	No		
Nature	Recombinant		
Species	Human		
Sequence	MAKQPSDVSSECDREGRQLQPAERPPQLRPGAPTSLQT EPQDRSPAPMSC DKSTQTPSPPCQAFNHYLSAMVVILEDIGDLSLCFGFIFTG LDLYGHHHS QDTEQLNHKDFS		
Predicted molecular weight	39 kDa including tags		
Amino acids	1 to 112		
Tags	GST tag N-Terminus		

Specifications

Our **Abpromise guarantee** covers the use of **ab112387** in the following tested applications.

The application notes include recommended starting dilutions; optimal dilutions/concentrations should be determined by the end user.

Applications	SDS-PAGE
	ELISA
	Western blot
Form	Liquid

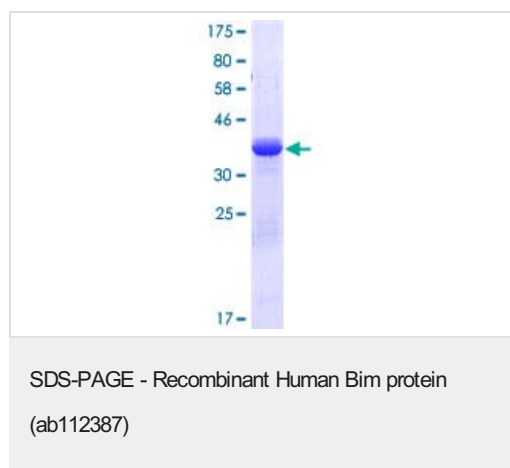
Preparation and Storage

Stability and Storage	Shipped on dry ice. Upon delivery aliquot and store at -80°C. Avoid freeze / thaw cycles.
	pH: 8.00
	Constituents: 0.31% Glutathione, 0.79% Tris HCl
	Glutathione is reduced

## General Info

<b>Function</b>	Induces apoptosis. Isoform BimL is more potent than isoform BimEL. Isoform Bim-alpha1, isoform Bim-alpha2 and isoform Bim-alpha3 induce apoptosis, although less potent than the isoforms BimEL, BimL and BimS. Isoform Bim-gamma induces apoptosis.
<b>Tissue specificity</b>	Isoform BimEL, isoform BimL and isoform BimS are the predominant isoforms and are ubiquitously expressed with a tissue-specific variation. Isoform Bim-gamma is most abundantly expressed in small intestine and colon, and in lower levels in spleen, prostate, testis, heart, liver and kidney.
<b>Sequence similarities</b>	Belongs to the Bcl-2 family.
<b>Domain</b>	The BH3 motif is required for Bcl-2 binding and cytotoxicity.
<b>Cellular localization</b>	Mitochondrion and Endomembrane system. Associated with intracytoplasmic membranes.

## Images



12.5% SDS-PAGE analysis of ab112387. Stained with Coomassie Blue

**Please note:** All products are "FOR RESEARCH USE ONLY. NOT FOR USE IN DIAGNOSTIC PROCEDURES"

## Our Abpromise to you: Quality guaranteed and expert technical support

- Replacement or refund for products not performing as stated on the datasheet
- Valid for 12 months from date of delivery
- Response to your inquiry within 24 hours
- We provide support in Chinese, English, French, German, Japanese and Spanish
- Extensive multi-media technical resources to help you
- We investigate all quality concerns to ensure our products perform to the highest standards

If the product does not perform as described on this datasheet, we will offer a refund or replacement. For full details of the Abpromise, please visit <https://www.abcam.com/abpromise> or contact our technical team.

## Terms and conditions

- 
- Guarantee only valid for products bought direct from Abcam or one of our authorized distributors