

## Product datasheet

# Recombinant Human Bim protein (denatured) ab130020

[1 Image](#)

### Description

<b>Product name</b>	Recombinant Human Bim protein (denatured)
<b>Purity</b>	> 80 % SDS-PAGE.
<b>Expression system</b>	Escherichia coli
<b>Accession</b>	<u><b>O43521-2</b></u>
<b>Protein length</b>	Full length protein
<b>Animal free</b>	No
<b>Nature</b>	Recombinant
<b>Species</b>	Human
<b>Sequence</b>	<b>MGSSHHHHHH SSGLVPRGSH MGSHMAKQPS</b> DVSSECDREG RQLQPAERPP QLRPGAPTSL QTEPQDRSPA PMSCDKSTQT PSPPCQAFNH YLSAMASMRQ AEPADMRPEI WIAQELRRIG DEFNAYYARR VFLNNYQAAE DHPRMVILRL LRYIVRLVWR MH
<b>Predicted molecular weight</b>	19 kDa including tags
<b>Amino acids</b>	1 to 138
<b>Tags</b>	His tag N-Terminus
<b>Description</b>	Recombinant Human Bim protein

### Specifications

Our **Abpromise guarantee** covers the use of **ab130020** in the following tested applications.

The application notes include recommended starting dilutions; optimal dilutions/concentrations should be determined by the end user.

**Applications** SDS-PAGE

**Form** Liquid

### Preparation and Storage

## Stability and Storage

Shipped at 4°C. Store at +4°C short term (1-2 weeks). Upon delivery aliquot. Store at -20°C or -80°C. Avoid freeze / thaw cycle.

pH: 8.00

Constituents: 12.01% Urea, 0.08% DTT, 0.32% Tris HCl, 20% Glycerol (glycerin, glycerine), 1.75% Sodium chloride

## General Info

### Function

Induces apoptosis. Isoform BimL is more potent than isoform BimEL. Isoform Bim-alpha1, isoform Bim-alpha2 and isoform Bim-alpha3 induce apoptosis, although less potent than the isoforms BimEL, BimL and BimS. Isoform Bim-gamma induces apoptosis.

### Tissue specificity

Isoform BimEL, isoform BimL and isoform BimS are the predominant isoforms and are ubiquitously expressed with a tissue-specific variation. Isoform Bim-gamma is most abundantly expressed in small intestine and colon, and in lower levels in spleen, prostate, testis, heart, liver and kidney.

### Sequence similarities

Belongs to the Bcl-2 family.

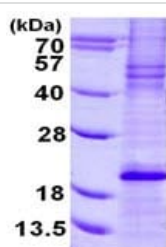
### Domain

The BH3 motif is required for Bcl-2 binding and cytotoxicity.

### Cellular localization

Mitochondrion and Endomembrane system. Associated with intracytoplasmic membranes.

## Images



15% SDS-PAGE analysis of ab130020 (3 µg).

SDS-PAGE - Recombinant Human Bim protein  
(denatured) (ab130020)

**Please note:** All products are "FOR RESEARCH USE ONLY. NOT FOR USE IN DIAGNOSTIC PROCEDURES"

## Our Abpromise to you: Quality guaranteed and expert technical support

- Replacement or refund for products not performing as stated on the datasheet
- Valid for 12 months from date of delivery
- Response to your inquiry within 24 hours
- We provide support in Chinese, English, French, German, Japanese and Spanish
- Extensive multi-media technical resources to help you
- We investigate all quality concerns to ensure our products perform to the highest standards

If the product does not perform as described on this datasheet, we will offer a refund or replacement. For full details of the Abpromise,

please visit <https://www.abcam.com/abpromise> or contact our technical team.

#### **Terms and conditions**

---

- Guarantee only valid for products bought direct from Abcam or one of our authorized distributors