

Product datasheet

Recombinant Human Bmi1 protein ab114169

2 Images

Description	
Product name	Recombinant Human Bmi1 protein
Expression system	Wheat germ
Accession	<b><u>P35226</u></b>
Protein length	Full length protein
Animal free	No
Nature	Recombinant
Species	Human
Sequence	MHRTTRIKITELNPHLMCVLCGGYFIDATTIIECLHSFCKTCM RYLETS KYCPICDVQVHKTRPLLNIIRSDKTLQDIVYKLVPGLFKNEM KRRRDFYAA HPSADAANGSNEDRGEVADEDKRIITDDEIISLSIEFFDQN RLDRKVNKD KEKSKEEVNDKRYLRCPAAMTMHLRKFLRSKMDIPNTF QIDVMYEEEPL KDYYTLMDIAYITWRRNGPLPLKYRVRPTCKRMKISHQRD GLTNAGELE SDSGSDKANSFAGGIPSTSSCLPSPSTPVQSPHPQFPHIS STMNGTSNSP SGNHQSSFANRPRKASVNGSSATSSG
Predicted molecular weight	62 kDa including tags
Amino acids	1 to 326

Specifications	
Our <b><u>Abpromise guarantee</u></b> covers the use of <b>ab114169</b> in the following tested applications.	
The application notes include recommended starting dilutions; optimal dilutions/concentrations should be determined by the end user.	
Applications	Western blot  ELISA  SDS-PAGE
Form	Liquid
Preparation and Storage	

## Preparation and Storage

### Stability and Storage

Shipped on dry ice. Upon delivery aliquot and store at -80°C. Avoid freeze / thaw cycles.

pH: 8.00

Constituents: 0.3% Glutathione, 0.79% Tris HCl

## General Info

### Function

Component of the Polycomb group (PcG) multiprotein PRC1 complex, a complex required to maintain the transcriptionally repressive state of many genes, including Hox genes, throughout development. PcG PRC1 complex acts via chromatin remodeling and modification of histones; it mediates monoubiquitination of histone H2A 'Lys-119', rendering chromatin heritably changed in its expressibility. In the PRC1 complex, it is required to stimulate the E3 ubiquitin-protein ligase activity of RNF2/RING2.

### Sequence similarities

Contains 1 RING-type zinc finger.

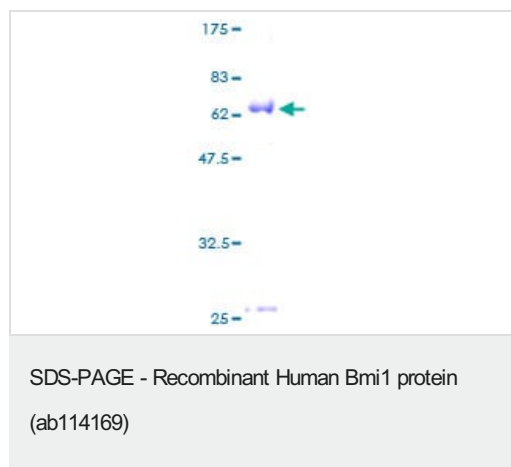
### Post-translational modifications

Monoubiquitinated (By similarity). May be polyubiquitinated; which does not lead to proteasomal degradation.

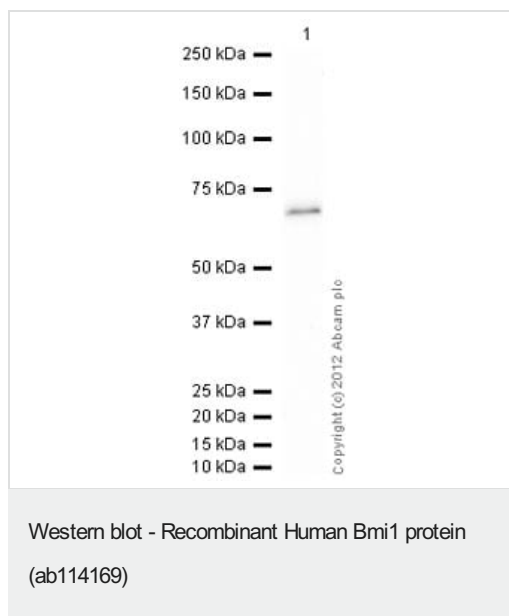
### Cellular localization

Nucleus. Cytoplasm.

## Images



ab114169 on a 12.5% SDS-PAGE Stained with Coomassie Blue.



Anti-Bmi1 antibody (**ab63767**) at 2 µg/ml + Recombinant Human Bmi1 protein (ab114169) at 0.1 µg

### Secondary

Goat Anti-Rabbit IgG H&L (HRP) preadsorbed (**ab97080**) at 1/5000 dilution

Developed using the ECL technique.

Performed under reducing conditions.

**Exposure time:** 30 seconds

**ab63767** recognizes the full length tagged recombinant Bmi1 protein (ab114169) which has an expected molecular weight of 62 kDa.

**Please note:** All products are "FOR RESEARCH USE ONLY. NOT FOR USE IN DIAGNOSTIC PROCEDURES"

### Our Abpromise to you: Quality guaranteed and expert technical support

- Replacement or refund for products not performing as stated on the datasheet
- Valid for 12 months from date of delivery
- Response to your inquiry within 24 hours
- We provide support in Chinese, English, French, German, Japanese and Spanish
- Extensive multi-media technical resources to help you
- We investigate all quality concerns to ensure our products perform to the highest standards

If the product does not perform as described on this datasheet, we will offer a refund or replacement. For full details of the Abpromise, please visit <https://www.abcam.com/abpromise> or contact our technical team.

### Terms and conditions

- Guarantee only valid for products bought direct from Abcam or one of our authorized distributors