

Product datasheet

Recombinant Human BRCC45/BRE protein ab160555

1 Image

Description

Product name	Recombinant Human BRCC45/BRE protein
Expression system	Wheat germ
Protein length	Full length protein
Animal free	No
Nature	Recombinant
Species	Human
Sequence	MSPEVALNRISPMLSPFISSVVRNGKVGLDATNCLRITDLK SGCTSLTPG PNCDFRKLHIPYAGETLKWDIIFNAQYPELPPDFIFGEDAEF LPDPSALQ NLASWNPSNPECLLLVVKELVQQYHQFQCSRLRESSRLM FEYQTLLEEQ YGENMEIYAGKKNWTGEFSARFLLKLPVDFSNIPTYLLKD VNEDPGEDV ALLSVSFEDTEATQVYPKLYLSPRIEHALGGSSALHIPAFP GGGCLIDYV PQVCHLLTNKVQWVQGYHKRREYIAAFLSHFGTGVVEYDA EGFTKLTL LMWKDFCFLVHIDLPLFFPRDQPTLTFQSVYHFTNSGQLY SQAQKNYPYS PRWDGNEMAKRAKGCQGSRDACSPWEQVLAFVAKTG CKLLQPQRNWPSS RGPPWRASEGERTAQ
Amino acids	1 to 415
Tags	GST tag N-Terminus

Specifications

Our **Abpromise guarantee** covers the use of **ab160555** in the following tested applications.

The application notes include recommended starting dilutions; optimal dilutions/concentrations should be determined by the end user.

Applications	ELISA Western blot
Form	Liquid

Additional notes

This product was previously labelled as BRCC45.

Preparation and Storage

Stability and Storage

Shipped on dry ice. Upon delivery aliquot and store at -80°C. Avoid freeze / thaw cycles.

pH: 8.00

Constituents: 0.31% Glutathione, 0.79% Tris HCl

General Info

Function

Component of the BRCA1-A complex, a complex that specifically recognizes 'Lys-63'-linked ubiquitinated histones H2A and H2AX at DNA lesions sites, leading to target the BRCA1-BARD1 heterodimer to sites of DNA damage at double-strand breaks (DSBs). The BRCA1-A complex also possesses deubiquitinase activity that specifically removes 'Lys-63'-linked ubiquitin on histones H2A and H2AX. In the BRCA1-A complex, it acts as an adapter that bridges the interaction between BABAM1/NBA1 and the rest of the complex, thereby being required for the complex integrity and modulating the E3 ubiquitin ligase activity of the BRCA1-BARD1 heterodimer. Probably also plays a role as a component of the BRISC complex, a multiprotein complex that specifically cleaves 'Lys-63'-linked ubiquitin. May play a role in homeostasis or cellular differentiation in cells of neural, epithelial and germline origins. May also act as a death receptor-associated anti-apoptotic protein, which inhibits the mitochondrial apoptotic pathway. May regulate TNF-alpha signaling through its interactions with TNFRSF1A; however these effects may be indirect.

Tissue specificity

Expressed in all cell lines examined. Highly expressed in placenta.

Sequence similarities

Belongs to the BRE family.

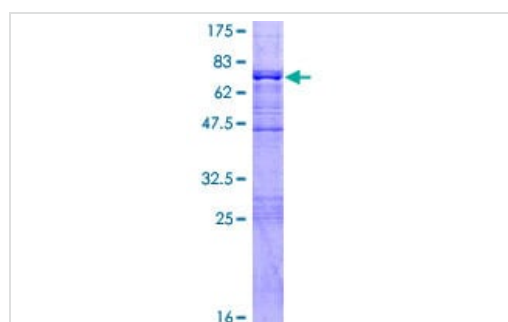
Domain

Contains 2 ubiquitin-conjugating enzyme family-like (UEV-like) regions. These regions lack the critical Cys residues required for ubiquitination but retain the ability to bind ubiquitin.

Cellular localization

Cytoplasm. Nucleus. Localizes at sites of DNA damage at double-strand breaks.

Images



ab160555 on a 12.5% SDS-PAGE stained with Coomassie Blue.

SDS-PAGE - Recombinant Human BRCC45/BRE protein (ab160555)

Our Abpromise to you: Quality guaranteed and expert technical support

- Replacement or refund for products not performing as stated on the datasheet
- Valid for 12 months from date of delivery
- Response to your inquiry within 24 hours

- We provide support in Chinese, English, French, German, Japanese and Spanish
- Extensive multi-media technical resources to help you
- We investigate all quality concerns to ensure our products perform to the highest standards

If the product does not perform as described on this datasheet, we will offer a refund or replacement. For full details of the Abpromise, please visit <https://www.abcam.com/abpromise> or contact our technical team.

Terms and conditions

- Guarantee only valid for products bought direct from Abcam or one of our authorized distributors