

Recombinant human BRD3 protein ab196096

2 Images

Description	
Product name	Recombinant human BRD3 protein
Purity	>= 37 % SDS-PAGE.
Expression system	Escherichia coli
Accession	<u>Q15059</u>
Protein length	Protein fragment
Animal free	No
Nature	Recombinant
Species	Human
Sequence	MHHHHHPSKPGRKTNQLQYMQNVVVKTLWKHQFAWPF YQPVDAIKLNLP DYHKIKNPMDMGTIKKRENNYYWSASECMQDFNTMFTN CYYNKPTDD VLMAQALEKIFLQKVAQMPQEEVELLPAPKGKGRKPAA GAQSAGTQQV AAVSSVSPATPFQSVPTVSQTPVIAATPVPTITANVTSVP VPPAAAPPP PATPVPVPPTPPVVKKKGVKRKADTTPTTSAITASRSE SPPPLSDPK QAKVVARRESGGRPIKPPKKDLEDGEVPQHAGKKGKLS EHLRYCDSILRE MLSKKHAAYAWPFYKPVDAEAELELDYHDIKHPMDLSTV KRKMDGREYP DAQGFAADVRLMFSNCYKYNPPDHEVVAMARKLQDVFE MRFAKM
Predicted molecular weight	44 kDa including tags
Amino acids	29 to 417
Tags	His tag N-Terminus
Additional sequence information	Corresponding to bromodomains 1 and 2.

Specifications

Our **Abpromise guarantee** covers the use of **ab196096** in the following tested applications.

The application notes include recommended starting dilutions; optimal dilutions/concentrations should be determined by the end user.

Applications	Functional Studies
	SDS-PAGE
Form	Liquid

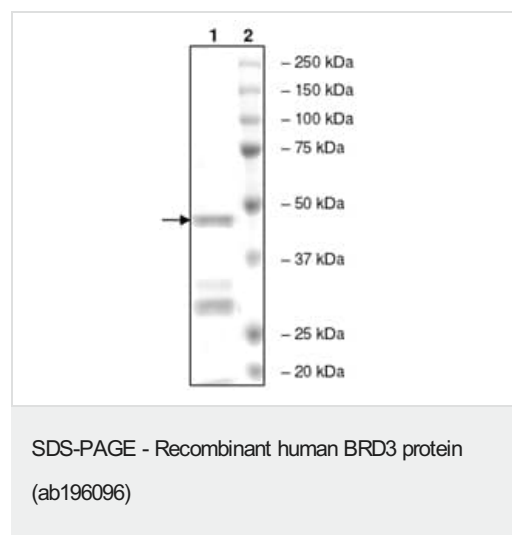
Preparation and Storage

Stability and Storage	Shipped on Dry Ice. Store at -80°C. Avoid freeze / thaw cycle.
	pH: 7.20
	Constituents: 0.95% HEPES, 1.68% Sodium chloride, 20% Glycerol (glycerin, glycerine)
	This product is an active protein and may elicit a biological response in vivo, handle with caution.

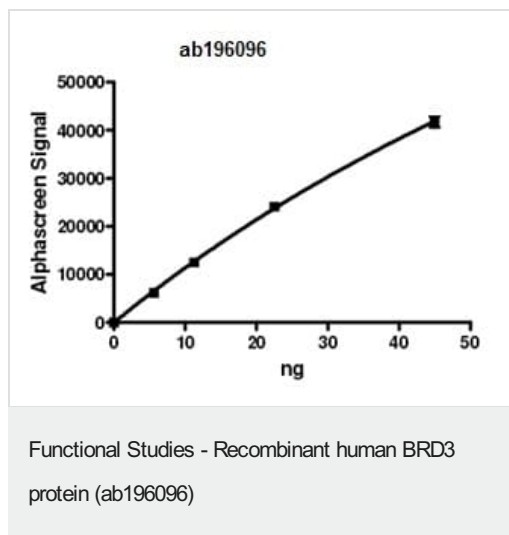
General Info

Tissue specificity	Ubiquitous.
Involvement in disease	Note=A chromosomal aberration involving BRD3 is found in a rare, aggressive, and lethal carcinoma arising in midline organs of young people. Translocation t(15;9)(q14;q34) with NUT which produces a BRD3-NUT fusion protein.
Sequence similarities	Contains 2 bromo domains.
Cellular localization	Nucleus.

Images



SDS PAGE analysis of ab196096.



BRD3 protein is incubated with biotinylated acetyl-histone peptide substrate in BRD assay buffer in a 10 µl reaction for 1 hour at RT. Ni acceptor beads are added, followed by Streptavidin-conjugated donor beads. After 1 hour incubation at RT, Alphacounts are measured.

Please note: All products are "FOR RESEARCH USE ONLY. NOT FOR USE IN DIAGNOSTIC PROCEDURES"

Our Abpromise to you: Quality guaranteed and expert technical support

- Replacement or refund for products not performing as stated on the datasheet
- Valid for 12 months from date of delivery
- Response to your inquiry within 24 hours
- We provide support in Chinese, English, French, German, Japanese and Spanish
- Extensive multi-media technical resources to help you
- We investigate all quality concerns to ensure our products perform to the highest standards

If the product does not perform as described on this datasheet, we will offer a refund or replacement. For full details of the Abpromise, please visit <https://www.abcam.com/abpromise> or contact our technical team.

Terms and conditions

- Guarantee only valid for products bought direct from Abcam or one of our authorized distributors