

Recombinant Human Brevican protein ab153476

1 Image

Description

Product name	Recombinant Human Brevican protein
Expression system	Wheat germ
Protein length	Full length protein
Animal free	No
Nature	Recombinant
Species	Human
Sequence	

MAQLFLPLLAALVLAQAPAAALADVLEGDSSSEDRAFRVRIA
GDAPLQGVLG
GALTIPCHVHYLRPPPSRRAVLGSPRVKWTFLSRGREAEV
LVARGVRVKV
NEAYRFRVALPAYPASLTDVSLALSELRPNDSGYRCEVQ
HGIDDSSDAV
EVKVKGVVFLYREGSARYAFSFGAQEACARIGAHATPE
QLYAAYLGGY
EQCDAGWLSDQTVRYPIQTPREACYGDMDGFPGVRNYG
VVDPDDLVDVYC
YAEDLNGELFLGDPPEKLTLEEARAYCQERGAEIATTGQL
YAAWDGGLDH
CSPGWLADGSVRYPIVTPSQRCGGGLPGVKTLFLFPNQ
TFPNTKHSRFRN
YCFRDSAQPSAIPASNPASNPASDGLAINTVTTLEEL
QLPQEATESE
SRGAISIPIMEDGGGGSSTPEDPAEAPRTLLEFETQSMV
PPTGFSEEEG
KALEEEEEKYEDEEEKEEEEEEEEEVEDEALWAWPSELSS
PGPEASLPTEPA
AQEKSLSQAPARAVLQPGASPLPDGESEASRPPRVHGP
PTETLPTPRERN
LASPSPSTLVEAREVGEATGGPELSGVPRGESEETGSSE
GAPSLPATRA
PEGTRELEAPSEDNSGRTAPAGTSVQAQPVLPDTSASRG
GVAVVPASGDC
VPSPCHNGGTCLEEEEGVRCLCLPGYGGDLCDVGLRFC
NPGWDAFQGACY
KHFSTRRSWEEAETQCRMYGAHLASISTPEEQDFINNRYR

EYQWIGLNDR
TIEGDFLWSDGVPLLYENWNPGQPD SYFLSGENCVVMV
WHDQGQWSDVPC
NYHLSYTCKMGLVSCGPPPELPLAQVFGRPRLRYEVDTV
LRYRCREGLAQ
RNLPLIRCQENGRWEAPQISCVPRRPARALHPEEDPEGR
QGRLLGRWKAL LIPPSSPMPGP

Amino acids 1 to 911
Tags GST tag N-Terminus

Specifications

Our **Abpromise guarantee** covers the use of **ab153476** in the following tested applications.

The application notes include recommended starting dilutions; optimal dilutions/concentrations should be determined by the end user.

Applications Western blot
ELISA
Form Liquid

Additional notes

Preparation and Storage

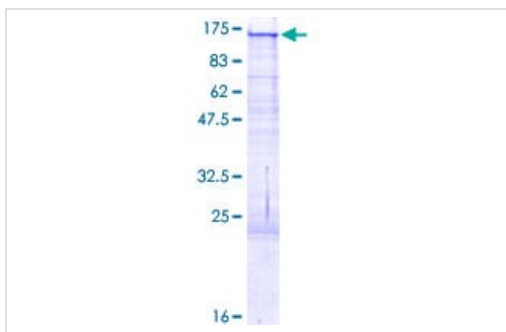
Stability and Storage Shipped on dry ice. Upon delivery aliquot and store at -80°C. Avoid freeze / thaw cycles.
pH: 8.00
Constituents: 0.31% Glutathione, 0.79% Tris HCl

General Info

Relevance Brevican is the most abundant chondroitin sulfate proteoglycan in the extracellular matrix of the adult brain. It is a member of the lectican family of aggregating extracellular matrix proteoglycans that bear chondroitin sulfate (CS) chains. It is highly expressed in the central nervous system and is thought to stabilize synapses and inhibit neural plasticity. Brevican is secreted from astrocytes and neurons as a 145 kD core protein that bears up to three, covalently-linked, CS chains. It is also secreted as a 145 kD core protein without CS chains. When cleaved by extracellular glutamyl endopeptidases, the ADAMTSs, a 55 kD N-terminal fragment is formed that contains the unique C-terminal epitope EAMESE.

Cellular localization Isoform 1 is secreted, extracellular space, extracellular matrix; Isoform 2 is found on the membrane; Lipid-anchor, GPI-anchor.

Images



SDS-PAGE - Recombinant Human Brevican protein
(ab153476)

ab153476 on a 12.5% SDS-PAGE stained with Coomassie Blue.

Please note: All products are "FOR RESEARCH USE ONLY. NOT FOR USE IN DIAGNOSTIC PROCEDURES"

Our Abpromise to you: Quality guaranteed and expert technical support

- Replacement or refund for products not performing as stated on the datasheet
- Valid for 12 months from date of delivery
- Response to your inquiry within 24 hours
- We provide support in Chinese, English, French, German, Japanese and Spanish
- Extensive multi-media technical resources to help you
- We investigate all quality concerns to ensure our products perform to the highest standards

If the product does not perform as described on this datasheet, we will offer a refund or replacement. For full details of the Abpromise, please visit <https://www.abcam.com/abpromise> or contact our technical team.

Terms and conditions

- Guarantee only valid for products bought direct from Abcam or one of our authorized distributors