

Product datasheet

Recombinant Human BTC protein (Fc Chimera) ab206022

[1 Image](#)

Description

Product name	Recombinant Human BTC protein (Fc Chimera)
Purity	> 92 % SDS-PAGE.
Endotoxin level	< 1.000 Eu/ μ g
Expression system	HEK 293 cells
Accession	<u>P35070</u>
Protein length	Full length protein
Animal free	No
Nature	Recombinant
Species	Human
Sequence	DGNSTRSPETNGLLCGDPEENCAATTTQSKRKGHFSRCP KQYKHYCIKGR CRFVVAEQTPSCVCDGYIGARCERVDLFY
Predicted molecular weight	37 kDa including tags
Amino acids	32 to 111
Additional sequence information	Fused with a Human IgG1 Fc tag at the C-terminus, This product is for the mature full length protein. The signal peptide and propeptide are not included.

Specifications

Our **Abpromise guarantee** covers the use of **ab206022** in the following tested applications.

The application notes include recommended starting dilutions; optimal dilutions/concentrations should be determined by the end user.

Applications	SDS-PAGE
Form	Lyophilized
Additional notes	Protein previously labeled as Betacellulin.

Preparation and Storage

Stability and Storage Shipped at 4°C. Store at -20°C or -80°C. Avoid freeze / thaw cycle.

pH: 7.4

Constituents: 0.61% Tris, 0.75% Glycine, Sodium chloride, L-Arginine

Lyophilized from 0.22 µm filtered solution.

5-10% trehalose is commonly used for freeze drying, and after reconstitution, the trehalose is mostly about 3-5%

Reconstitution

Reconstitute with sterile deionized water to a concentration of 400 µg/ml.

General Info

Function

Potent mitogen for retinal pigment epithelial cells and vascular smooth muscle cells. The effects of betacellulin are probably mediated by the EGF receptor and other related receptors.

Tissue specificity

Synthesized in several tissues and tumor cells. Predominantly expressed in pancreas and small intestine.

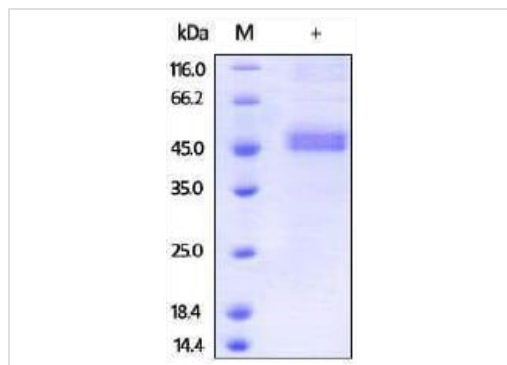
Sequence similarities

Contains 1 EGF-like domain.

Cellular localization

Cell membrane and Secreted > extracellular space.

Images



SDS-PAGE analysis of reduced ab206022, staining overnight with Coomassie Blue. DTT-reduced Protein migrates as 45-50 kDa in SDS-PAGE due to glycosylation.

SDS-PAGE - Recombinant Human BTC protein (Fc Chimera) (ab206022)

Please note: All products are "FOR RESEARCH USE ONLY. NOT FOR USE IN DIAGNOSTIC PROCEDURES"

Our Abpromise to you: Quality guaranteed and expert technical support

- Replacement or refund for products not performing as stated on the datasheet
- Valid for 12 months from date of delivery
- Response to your inquiry within 24 hours
- We provide support in Chinese, English, French, German, Japanese and Spanish
- Extensive multi-media technical resources to help you
- We investigate all quality concerns to ensure our products perform to the highest standards

If the product does not perform as described on this datasheet, we will offer a refund or replacement. For full details of the Abpromise,

please visit <https://www.abcam.com/abpromise> or contact our technical team.

Terms and conditions

- Guarantee only valid for products bought direct from Abcam or one of our authorized distributors