

Product datasheet

Recombinant Human C1r protein ab152248

1 Image

Description

Product name	Recombinant Human C1r protein
Purity	> 80 % SDS-PAGE. Purity of ab152248 is >80% by CBR (commassie blue reagent = SDS-PAGE). Please contact technical support regarding the purity of a specific batch.
Expression system	Wheat germ
Accession	<u>P00736</u>
Protein length	Full length protein
Animal free	No
Nature	Recombinant
Species	Human
Sequence	MWLLYLLVPALFCRAGGSIPIQKLFGEVTSPLFPKYPNN FETTTVITV PTGYRVKLVFQQFDLEPSEGC FYDYVKISADKKSLGRFCG QLGSPLGNPP GKKEFMSQGNKMLLTFHTDFSNEENGTIMFYKGLAYYQA VDLDECASRS KLGEEDPQPQCQHLCHNYVGGYFCSCRPGYELQEDRHS CQAECSSSELYTE ASGYISSLEYPRSYPPDLRCNYSIRVERGLTLHLKFLEPFDI DDHQQVHC PYDQLQIYANGKNIGFCGKQRPPDLDTSSNAVDLLFFTD ESGDSRGWKL RYTTEIHKCPQPKTLDEFTIQNLQPQYQFRDYFIATCKQGYQ LIEGNQV LHSFTAVCQDDGTWHRAMPCKIKDCGQPRNLPNGDFR YTTMGMVNTYKA RIQYYCHEPYKMQTRAGSRESEQGVYTCTAQGWKNEQK GEKIPRCLPV CGKPVNPVEQRQRIIGGQKAKMGNFPWQVFTNIHGRGGG ALLGDRWILTA AHTLYPKEHEAQSNASLDVFLGHTNVEELMKLGNHPIRR SVHPDYRQDE SYNFEGDIALLELENSVTLGPNLLPICLPDSDTFYDLGLMG YVSGFGVME

EKIAHDLRFVRLPVANPQACENWLRGKNRMDVFSQNMFCAGHPSLKQDAC
QGDSGGVFAVRDPNTDRWVATGM/SWGIGCSRGYGFYTK
VLNYVDWIKKE MEEED

Predicted molecular weight	103 kDa including tags
Amino acids	1 to 705
Tags	GST tag N-Terminus

Specifications

Our **Abpromise guarantee** covers the use of **ab152248** in the following tested applications.

The application notes include recommended starting dilutions; optimal dilutions/concentrations should be determined by the end user.

Applications	Western blot
	SDS-PAGE
	ELISA

Form	Liquid
-------------	--------

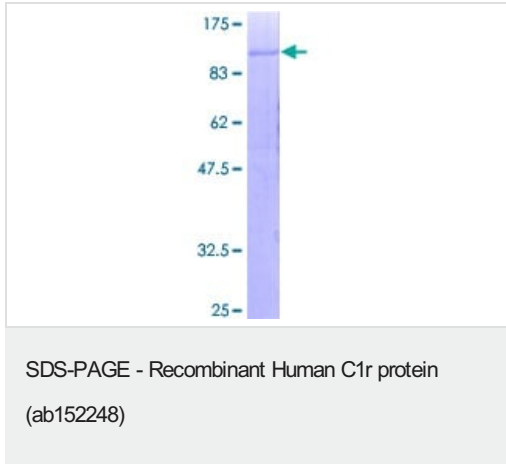
Preparation and Storage

Stability and Storage	Shipped on Dry Ice. Upon delivery aliquot. Store at -80°C. Avoid freeze / thaw cycle. pH: 8.00 Constituents: 0.31% Glutathione, 0.79% Tris HCl
------------------------------	--

General Info

Function	C1r B chain is a serine protease that combines with C1q and C1s to form C1, the first component of the classical pathway of the complement system.
Sequence similarities	Belongs to the peptidase S1 family. Contains 2 CUB domains. Contains 1 EGF-like domain. Contains 1 peptidase S1 domain. Contains 2 Sushi (CCP/SCR) domains.
Post-translational modifications	The iron and 2-oxoglutarate dependent 3-hydroxylation of aspartate and asparagine is (R) stereospecific within EGF domains.

Images



12.5% SDS-PAGE stained with Coomassie Blue.

Please note: All products are "FOR RESEARCH USE ONLY. NOT FOR USE IN DIAGNOSTIC PROCEDURES"

Our Abpromise to you: Quality guaranteed and expert technical support

- Replacement or refund for products not performing as stated on the datasheet
- Valid for 12 months from date of delivery
- Response to your inquiry within 24 hours
- We provide support in Chinese, English, French, German, Japanese and Spanish
- Extensive multi-media technical resources to help you
- We investigate all quality concerns to ensure our products perform to the highest standards

If the product does not perform as described on this datasheet, we will offer a refund or replacement. For full details of the Abpromise, please visit <https://www.abcam.com/abpromise> or contact our technical team.

Terms and conditions

- Guarantee only valid for products bought direct from Abcam or one of our authorized distributors