

## Product datasheet

# Recombinant Human C3a R protein ab152249

1 Image

### Description

---

<b>Product name</b>	Recombinant Human C3a R protein
<b>Expression system</b>	Wheat germ
<b>Accession</b>	<u><a href="#">Q16581</a></u>
<b>Protein length</b>	Full length protein
<b>Animal free</b>	No
<b>Nature</b>	Recombinant
<b>Species</b>	Human

<b>Sequence</b>	MASFSAETNSTDLLSQPWNEPPVILSMVILSLTFLLGLPGN GLVLWVAGL KMQRVTNTWFLHLTLADLLCCLSLPFLAHLALQGQWPY GRFLCKLIPS IVLNMFASVFLLTAISLDRCLLVFKPIWCQNHRNVGMACSI CGCIWVVA FVMCIPVFVYREIFTTDNHNRCGYKFLSSSLDYPDFYGD LENRSLENI VQPPGEMNDRLDPSSFQTNHPWTVPTVFQPQTFQRPS ADSLPRGSARLT SQNLYSNVFKPADVVSPKIPSGFPIEDHETSPLDNSDAFL STHLKLFPSA SSNSFYESELPQGFQDYNLGQFTDDDQVPTPLVAITITRL VVGFLPSV IMACYSFVFRMQRGRFAKSQSKTFRVAVVVAVFLVCW TPYHIFGVLS LLTDPETPLGKTLMSWDHVCIALASANSCFNPFYALLGK DFRKKARQSI QGILEAAFSEELTRSTHCPSPNNVISERNSTTV
-----------------	---

<b>Predicted molecular weight</b>	80 kDa including tags
<b>Amino acids</b>	1 to 482

### Specifications

---

Our **Abpromise guarantee** covers the use of **ab152249** in the following tested applications.

The application notes include recommended starting dilutions; optimal dilutions/concentrations should be determined by the end user.

<b>Applications</b>	Western blot SDS-PAGE ELISA
<b>Form</b>	Liquid
<b>Additional notes</b>	This product was previously labelled as C3a Receptor.

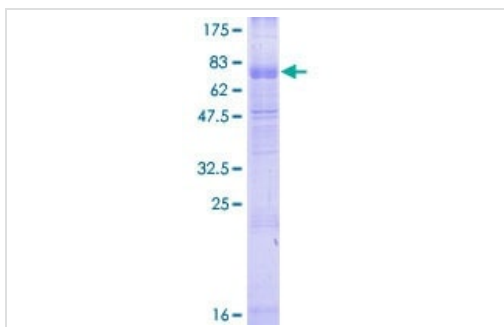
## Preparation and Storage

<b>Stability and Storage</b>	Shipped on dry ice. Upon delivery aliquot and store at -80°C. Avoid freeze / thaw cycles. pH: 8.00 Constituents: 0.31% Glutathione, 0.79% Tris HCl
------------------------------	--

## General Info

<b>Function</b>	Receptor for the chemotactic and inflammatory peptide anaphylatoxin C3a. This receptor stimulates chemotaxis, granule enzyme release and superoxide anion production.
<b>Tissue specificity</b>	Widely expressed in several differentiated hematopoietic cell lines, in the lung, spleen, ovary, placenta, small intestine, throughout the brain, heart, and endothelial cells. Mostly expressed in lymphoid tissues.
<b>Sequence similarities</b>	Belongs to the G-protein coupled receptor 1 family.
<b>Post-translational modifications</b>	Among the sulfation sites Tyr-174 is essential for binding of C3a anaphylatoxin.
<b>Cellular localization</b>	Cell membrane.

## Images



12.5% SDS-PAGE stained with Coomassie Blue.

SDS-PAGE - Recombinant Human C3a R protein  
(ab152249)

**Please note:** All products are "FOR RESEARCH USE ONLY. NOT FOR USE IN DIAGNOSTIC PROCEDURES"

## **Our Abpromise to you: Quality guaranteed and expert technical support**

---

- Replacement or refund for products not performing as stated on the datasheet
- Valid for 12 months from date of delivery
- Response to your inquiry within 24 hours
  
- We provide support in Chinese, English, French, German, Japanese and Spanish
- Extensive multi-media technical resources to help you
- We investigate all quality concerns to ensure our products perform to the highest standards

If the product does not perform as described on this datasheet, we will offer a refund or replacement. For full details of the Abpromise, please visit <https://www.abcam.com/abpromise> or contact our technical team.

## **Terms and conditions**

---

- Guarantee only valid for products bought direct from Abcam or one of our authorized distributors