

## Product datasheet

# Recombinant Human C4b protein (Tagged) ab236195

1 Image

### Description

<b>Product name</b>	Recombinant Human C4b protein (Tagged)	
<b>Purity</b>	> 90 % SDS-PAGE.	
<b>Expression system</b>	Escherichia coli	
<b>Accession</b>	<b><u>P0C0L5</u></b>	
<b>Protein length</b>	Protein fragment	
<b>Animal free</b>	No	
<b>Nature</b>	Recombinant	
<b>Species</b>	Human	
<b>Sequence</b>	EAPKVVEEQESRVHYTVCWRNGKVGLSGMAIADVTLTLLSG FHALRADLEK LTSLSDRYVSHFETEGPHVLLYFDSVPTSRECVGFQFEAVQVE VPVGLVQPAS ATLYDYNNPERRCSVFYGFAPSKSRLLATLCSAEVCQCAE GKCPQRRALE RGLQDEEDGYRMKFACYYPRVEYGFQVKVLREDSRAAFRL FETKITQVLHF TKDVKAAANQMRNFLVRASCRLRLEPGKEYLIMGLDGATY DLEGHPQYLL DSNSWIEEMPSERLCRSTRQRAACAQLNDFLQEYGTQGC QV	
<b>Predicted molecular weight</b>	49 kDa including tags	
<b>Amino acids</b>	1454 to 1744	
<b>Tags</b>	His tag N-Terminus	
<b>Additional sequence information</b>	N-terminal 6xHis-SUMO-tagged.	

### Specifications

Our **Abpromise guarantee** covers the use of **ab236195** in the following tested applications.

The application notes include recommended starting dilutions; optimal dilutions/concentrations should be determined by the end user.

**Applications** SDS-PAGE

**Form** Liquid

## Preparation and Storage

---

### Stability and Storage

Shipped at 4°C. Store at -20°C or -80°C. Avoid freeze / thaw cycle.

pH: 7.2

Constituents: 50% Glycerol (glycerin, glycerine), Tris buffer

## General Info

---

### Function

C4 plays a central role in the activation of the classical pathway of the complement system. It is processed by activated C1 which removes from the alpha chain the C4a anaphylatoxin. The remaining alpha chain fragment C4b is the major activation product and is an essential subunit of the C3 convertase (C4b2a) and the C5 convertase (C3bC4b2a) enzymes of the classical complement pathway.

Derived from proteolytic degradation of complement C4, C4a anaphylatoxin is a mediator of local inflammatory process. It induces the contraction of smooth muscle, increases vascular permeability and causes histamine release from mast cells and basophilic leukocytes.

### Sequence similarities

Contains 1 anaphylatoxin-like domain.

Contains 1 NTR domain.

### Post-translational modifications

Prior to secretion, the single-chain precursor is enzymatically cleaved to yield the non-identical chains (alpha, beta and gamma). During activation, the alpha chain is cleaved by C1 into C4a and C4b, and C4b stays linked to the beta and gamma chains. Further degradation of C4b by C1 into the inactive fragments C4c and C4d blocks the generation of C3 convertase.

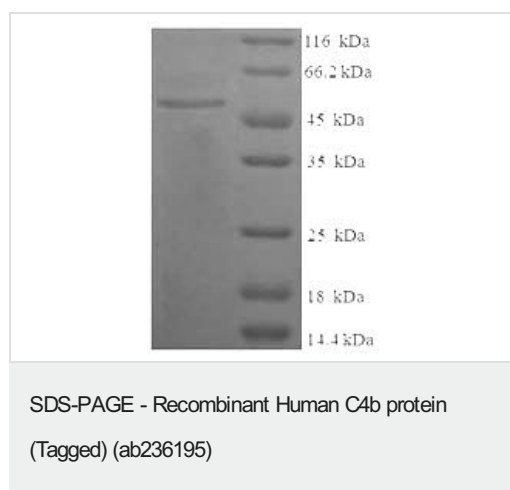
### Cellular localization

Secreted.

---

## Images

---



(Tris-Glycine gel) Discontinuous SDS-PAGE (reduced) analysis with 5% enrichment gel and 15% separation gel using ab236195.

**Please note:** All products are "FOR RESEARCH USE ONLY. NOT FOR USE IN DIAGNOSTIC PROCEDURES"

**Our Abpromise to you: Quality guaranteed and expert technical support**

---

- Replacement or refund for products not performing as stated on the datasheet
- Valid for 12 months from date of delivery
- Response to your inquiry within 24 hours
  
- We provide support in Chinese, English, French, German, Japanese and Spanish
- Extensive multi-media technical resources to help you
- We investigate all quality concerns to ensure our products perform to the highest standards

If the product does not perform as described on this datasheet, we will offer a refund or replacement. For full details of the Abpromise, please visit <https://www.abcam.com/abpromise> or contact our technical team.

### **Terms and conditions**

---

- Guarantee only valid for products bought direct from Abcam or one of our authorized distributors