

Product datasheet

Recombinant Human CALM1 Protein ab94519

[2 Images](#)

Description

Product name	Recombinant Human CALM1 Protein
Biological activity	The dilution curve of ab268375 was determined in a CAMK26δ activation assay using autocalmitide-2 as substrate.
Purity	> 95 % SDS-PAGE. Purity determined to be >95% by densitometry.
Expression system	Escherichia coli
Accession	<u>P0DP23</u>
Protein length	Full length protein
Animal free	No
Nature	Recombinant
Species	Human
Sequence	MADQLTEEQIAEFKEAFSLF DKDGDGTITT KELGTVMRSL GQNPTAEALQ DMINEVDADG NGTIDFPEFL TMMARKMKDT DSEEEIREAF RVFDKDGNGY ISAAELRHVM TNLGEKLTDE EVDDEMIREAD IDGDGQVNYE EFVQMMTAK
Amino acids	1 to 149
Tags	His tag N-Terminus

Specifications

Our **Abpromise guarantee** covers the use of **ab94519** in the following tested applications.

The application notes include recommended starting dilutions; optimal dilutions/concentrations should be determined by the end user.

Applications	Functional Studies SDS-PAGE
Form	Liquid

Preparation and Storage

Stability and Storage	Shipped on dry ice. Upon delivery aliquot and store at -80°C. Avoid freeze / thaw cycles. pH: 7.5
------------------------------	--

Preservative: 1.02% Imidazole

Constituents: 0.002% PMSF, 0.82% Sodium phosphate, 0.004% (R*,R*)-1,4-Dimercaptobutan-2,3-diol, 25% Glycerol (glycerin, glycerine), 1.74% Sodium chloride

This product is an active protein and may elicit a biological response in vivo, handle with caution.

General Info

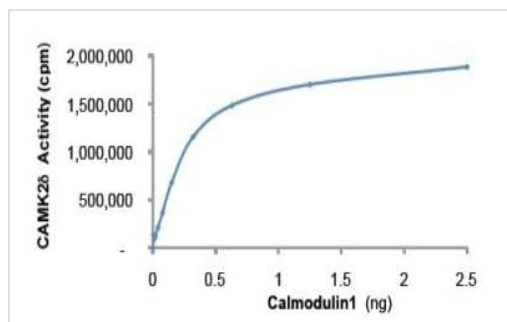
Relevance

Function: Calmodulin mediates the control of a large number of enzymes and other proteins by $\text{Ca}(2+)$. Among the enzymes to be stimulated by the calmodulin- $\text{Ca}(2+)$ complex are a number of protein kinases and phosphatases. Together with CEP110 and centrin, is involved in a genetic pathway that regulates the centrosome cycle and progression through cytokinesis.

Cellular localization

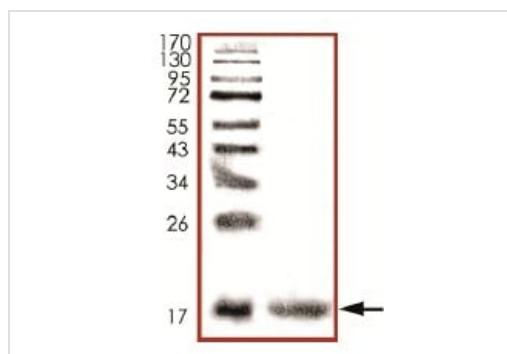
Cytoplasm > cytoskeleton > spindle. Cytoplasm > cytoskeleton > spindle pole. Distributed throughout the cell during interphase, but during mitosis becomes dramatically localized to the spindle poles and the spindle microtubules.

Images



Functional Studies - Recombinant Human
Calmodulin 1 Protein (ab94519)

ab94519 in a sample CAMK delta kinase activation assay. The assay was performed in 25 ng CAMK delta, 200 ng/μl autocamtide-2 peptide, 0.4mM CaCl_2 , 50 μM ATP and trace $[^{33}\text{P}]$ -gamma ATP in a 25 μl reaction volume for 15 minutes at 30°C.



SDS-PAGE - Recombinant Human Calmodulin 1
Protein (ab94519)

ab94519 analysed by SDS-PAGE.

Please note: All products are "FOR RESEARCH USE ONLY. NOT FOR USE IN DIAGNOSTIC PROCEDURES"

Our Abpromise to you: Quality guaranteed and expert technical support

- Replacement or refund for products not performing as stated on the datasheet
- Valid for 12 months from date of delivery
- Response to your inquiry within 24 hours

- We provide support in Chinese, English, French, German, Japanese and Spanish
- Extensive multi-media technical resources to help you
- We investigate all quality concerns to ensure our products perform to the highest standards

If the product does not perform as described on this datasheet, we will offer a refund or replacement. For full details of the Abpromise, please visit <https://www.abcam.com/abpromise> or contact our technical team.

Terms and conditions

- Guarantee only valid for products bought direct from Abcam or one of our authorized distributors