

Product datasheet

Recombinant Human Calsequestrin 2 protein ab93736

1 Image

Description

Product name	Recombinant Human Calsequestrin 2 protein
Purity	> 95 % SDS-PAGE. ab93736 was purified using conventional chromatography techniques.
Expression system	Escherichia coli
Protein length	Full length protein
Animal free	No
Nature	Recombinant
Species	Human
Sequence	M RGSHHHHHH G MASMTGGQQ M GRDLYDDDD K DRWGSMEEG LNFPTYDGKD RVSLSSEKNF KQVLKKYDLL CLYYHEPVSS DKVTQKQFQL KEVLELVAQ VLEHKAIGFV MVDAKKEAKL AKKLGFDDEE SLYILKGDRT IEFDGEFAAD VLVEFLDLI EDPVEISSK LEVQAFERIE DYKLGFFK SEDSEYYKAF EEAAEHFQPY IKFFATFDKG VAKKLSLKMN EVDFYEPFMD EPIAIPNKPY TEEELVEFVK EHQRPTRLRRL RPEEMFETWE DDLNGIHVA FAEKSDPDGY EFLEILKQVA RDNTDNPDL S ILWIDPDDFP LLVAYWEKTF KIDLFRPQIG VVNVTADSV WMEIPDDDDL PTAELEDWI EDVLSGKINT EDDDEDDDDDD DNSDEEDNDD SDDDDDE

Specifications

Our **Abpromise guarantee** covers the use of **ab93736** in the following tested applications.

The application notes include recommended starting dilutions; optimal dilutions/concentrations should be determined by the end user.

Applications SDS-PAGE

Form Liquid

Preparation and Storage

Stability and Storage Shipped at 4°C. Store at +4°C short term (1-2 weeks). Upon delivery aliquot. Store at -20°C or -

80°C. Avoid freeze / thaw cycle.

pH: 8.00

Constituents: 0.0154% DTT, 0.316% Tris HCl, 20% Glycerol (glycerin, glycerine), 0.58% Sodium chloride

General Info

Function

Calsequestrin is a high-capacity, moderate affinity, calcium-binding protein and thus acts as an internal calcium store in muscle. The release of calcium bound to calsequestrin through a calcium release channel triggers muscle contraction. Binds 40 to 50 moles of calcium.

Involvement in disease

Defects in CASQ2 are the cause of catecholaminergic polymorphic ventricular tachycardia type 2 (CPVT2) [MIM:611938]; also known as stress-induced polymorphic ventricular tachycardia (VTSIP). CPVT2 is an autosomal recessive form of arrhythmogenic disorder characterized by stress-induced, bidirectional ventricular tachycardia that may degenerate into cardiac arrest and cause sudden death.

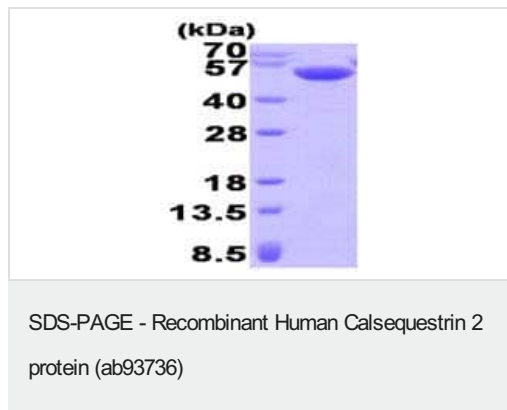
Sequence similarities

Belongs to the calsequestrin family.

Cellular localization

Sarcoplasmic reticulum lumen. This isoform of calsequestrin occurs in the sarcoplasmic reticulum's terminal cisternae luminal spaces of cardiac and slow skeletal muscle cells.

Images



15% SDS-PAGE analysis of ab93736 (3µg)

Please note: All products are "FOR RESEARCH USE ONLY. NOT FOR USE IN DIAGNOSTIC PROCEDURES"

Our Abpromise to you: Quality guaranteed and expert technical support

- Replacement or refund for products not performing as stated on the datasheet
- Valid for 12 months from date of delivery
- Response to your inquiry within 24 hours
- We provide support in Chinese, English, French, German, Japanese and Spanish
- Extensive multi-media technical resources to help you
- We investigate all quality concerns to ensure our products perform to the highest standards

If the product does not perform as described on this datasheet, we will offer a refund or replacement. For full details of the Abpromise,

please visit <https://www.abcam.com/abpromise> or contact our technical team.

Terms and conditions

- Guarantee only valid for products bought direct from Abcam or one of our authorized distributors