

# Recombinant human CaMKII delta protein ab84552

[2 References](#) [6 Images](#)

## Description

<b>Product name</b>	Recombinant human CaMKII delta protein
<b>Biological activity</b>	The specific activity of ab84552 was determined to be 5860 nmol/min/mg.
<b>Purity</b>	> 85 % Densitometry. Affinity purified.
<b>Expression system</b>	Baculovirus infected Sf9 cells
<b>Accession</b>	<a href="#"><u>Q13557</u></a>
<b>Protein length</b>	Full length protein
<b>Animal free</b>	No
<b>Nature</b>	Recombinant
<b>Species</b>	Human
<b>Predicted molecular weight</b>	82 kDa including tags
<b>Amino acids</b>	1 to 499
<b>Tags</b>	GST tag N-Terminus

## Specifications

Our [\*\*Abpromise guarantee\*\*](#) covers the use of **ab84552** in the following tested applications.

The application notes include recommended starting dilutions; optimal dilutions/concentrations should be determined by the end user.

<b>Applications</b>	Western blot Functional Studies SDS-PAGE
<b>Form</b>	Liquid
<b>Additional notes</b>	<a href="#"><b>ab188554</b></a> (CaMKII peptide) can be utilized as a substrate for assessing Kinase activity

## Preparation and Storage

<b>Stability and Storage</b>	Shipped on dry ice. Upon delivery aliquot and store at -80°C. Avoid freeze / thaw cycles. pH: 7.50 Constituents: 0.0038% EGTA, 0.00174% PMSF, 0.00385% DTT, 0.79% Tris HCl, 0.00292% EDTA, 25% Glycerol (glycerin, glycerine), 0.87% Sodium chloride
------------------------------	--

This product is an active protein and may elicit a biological response in vivo, handle with caution.

## General Info

### Function

CaM-kinase II (CAMK2) is a prominent kinase in the central nervous system that may function in long-term potentiation and neurotransmitter release.

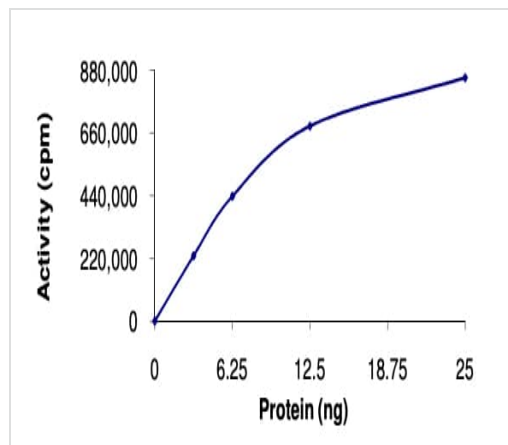
### Tissue specificity

Expressed in cardiac muscle and skeletal muscle. Isoform Delta 3, isoform Delta 2, isoform Delta 8 and isoform Delta 9 are expressed in cardiac muscle. Isoform Delta 11 is expressed in skeletal muscle.

### Sequence similarities

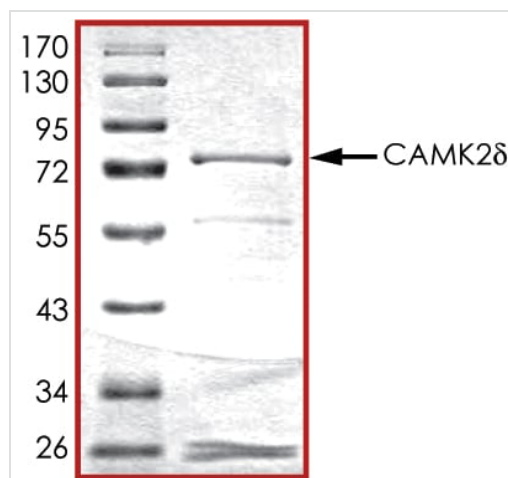
Belongs to the protein kinase superfamily. CAMK Ser/Thr protein kinase family. CaMK subfamily. Contains 1 protein kinase domain.

## Images



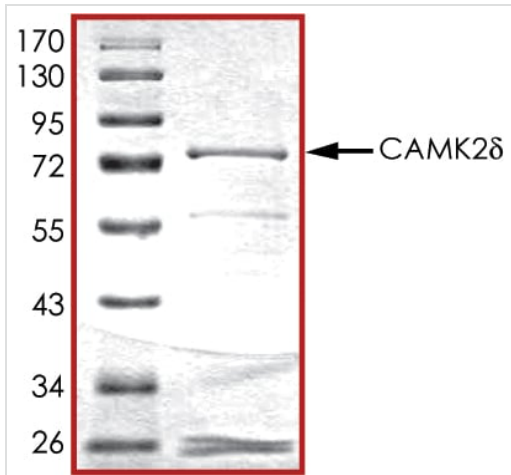
The specific activity of CaMKII delta (ab84552) was determined to be 5300 nmol/min/mg as per activity assay protocol

Functional Studies - Recombinant human CaMKII delta protein (ab84552)



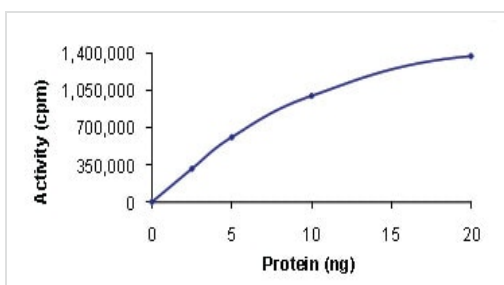
SDS PAGE analysis of ab84552

SDS-PAGE - Recombinant human CaMKII delta protein (ab84552)



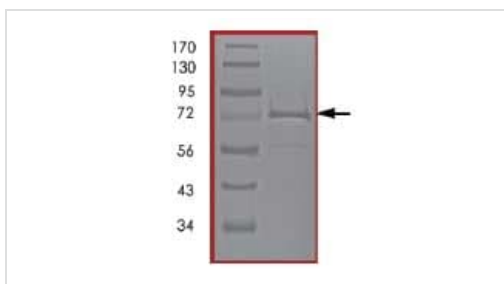
SDS PAGE analysis of ab84552

SDS-PAGE - Recombinant human CaMKII delta protein (ab84552)



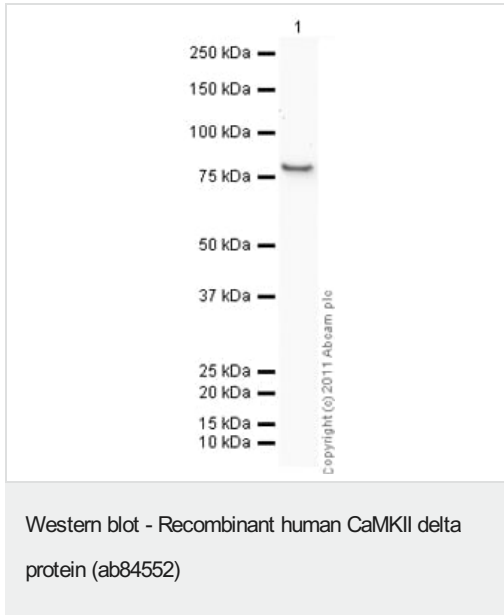
Kinase Assay. Specific activity 5860 nmol/min/mg.

Functional Studies - Recombinant human CaMKII delta protein (ab84552)



SDS-PAGE of ab84552. Approximate MWt 77 kDa.

SDS-PAGE - Recombinant human CaMKII delta protein (ab84552)



**Please note:** All products are "FOR RESEARCH USE ONLY. NOT FOR USE IN DIAGNOSTIC PROCEDURES"

### Our Abpromise to you: Quality guaranteed and expert technical support

---

- Replacement or refund for products not performing as stated on the datasheet
- Valid for 12 months from date of delivery
- Response to your inquiry within 24 hours
- We provide support in Chinese, English, French, German, Japanese and Spanish
- Extensive multi-media technical resources to help you
- We investigate all quality concerns to ensure our products perform to the highest standards

If the product does not perform as described on this datasheet, we will offer a refund or replacement. For full details of the Abpromise, please visit <https://www.abcam.com/abpromise> or contact our technical team.

### Terms and conditions

---

- Guarantee only valid for products bought direct from Abcam or one of our authorized distributors