

Recombinant Human CARD8 protein ab132292

1 Image

Description	
Product name	Recombinant Human CARD8 protein
Expression system	Wheat germ
Accession	<u>Q9Y2G2-3</u>
Protein length	Full length protein
Animal free	No
Nature	Recombinant
Species	Human
Sequence	MEKKECPEKSSSSEELPRRDSGSSRNIDASKLIRLQGS RKLLVDNSIRE LQYTKGIFQAEACVTNDTVYRELPCVSETLCDISHFFQE DDETEAEPL LFRAVPECQLSGGDIPSVSEEQESSEGQDSGDICSEENQI VSSYASKVCF EIEEDYKNRQFLGPEGNVDVELIDKSTNRYSVWFPTAGWY LWSATGLGFL VRDEVTVTIAFGSWSQHLALDLQHHEQWLVGGPLFDVTA EPEEAVAEIHL PHSISLQAGEVDVSWFLVAHFKNEGMVLEHPARVEPFYA VLESPTSFLMG ILLRIASGTRLSPITSNTLIYHPHPEDIKFHLYLVPSDALLTK AIDDE EDRFHGVRLQTSPMEPLNFGSSYVSNANLKVMPKWIS SL
Predicted molecular weight	70 kDa including tags
Amino acids	1 to 392

Specifications	
Our Abpromise guarantee covers the use of ab132292 in the following tested applications.	
The application notes include recommended starting dilutions; optimal dilutions/concentrations should be determined by the end user.	
Applications	ELISA SDS-PAGE

	Western blot
Form	Liquid

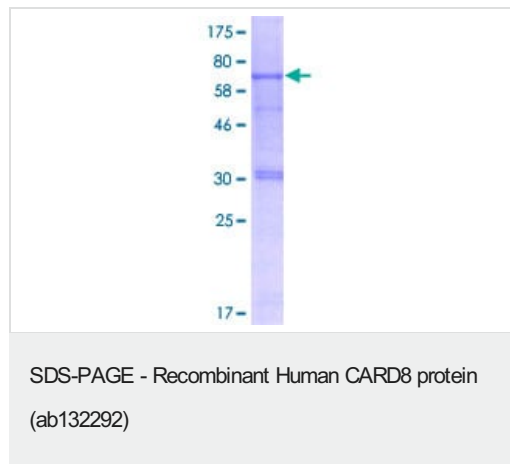
Preparation and Storage

Stability and Storage	Shipped on dry ice. Upon delivery aliquot and store at -80°C. Avoid freeze / thaw cycles. pH: 8.00 Constituents: 0.31% Glutathione, 0.79% Tris HCl
------------------------------	--

General Info

Function	Inhibits NF-kappa-B activation. May participate in a regulatory mechanism that coordinates cellular responses controlled by NF-kappa-B transcription factor. May be a component of the inflammasome, a protein complex which also includes PYCARD, NALP2 and CASP1 and whose function would be the activation of proinflammatory caspases.
Tissue specificity	High expression in lung, ovary, testis and placenta. Lower expression in heart, kidney and liver. Also expressed in spleen, lymph node and bone marrow.
Sequence similarities	Contains 1 CARD domain.
Cellular localization	Cytoplasm. Nucleus.

Images



12.5% SDS-PAGE stained with Coomassie Blue showing ab132292.

Please note: All products are "FOR RESEARCH USE ONLY. NOT FOR USE IN DIAGNOSTIC PROCEDURES"

Our Abpromise to you: Quality guaranteed and expert technical support

- Replacement or refund for products not performing as stated on the datasheet
- Valid for 12 months from date of delivery
- Response to your inquiry within 24 hours
- We provide support in Chinese, English, French, German, Japanese and Spanish

- Extensive multi-media technical resources to help you
- We investigate all quality concerns to ensure our products perform to the highest standards

If the product does not perform as described on this datasheet, we will offer a refund or replacement. For full details of the Abpromise, please visit <https://www.abcam.com/abpromise> or contact our technical team.

Terms and conditions

- Guarantee only valid for products bought direct from Abcam or one of our authorized distributors