

Product datasheet

Recombinant human Caspase-6/CASP-6 protein (Active) ab198067

[2 Images](#)

Description

Product name	Recombinant human Caspase-6/CASP-6 protein (Active)	
Biological activity	<p>Specific Activity: 1720 pmol/min/μg.</p> <p>Assay conditions: 50 mM HEPES, pH 7.2, 50 mM NaCl, 10 mM EDTA, 0.1% Chaps, 5% glycerol, 10 mM DTT, and 20 μM Caspase 6 / CASP-6 substrate. Incubate for 30 minutes at room temperature. Fluorescence intensity is measured at exc380/em505 nm.</p>	
Purity	> 90 % SDS-PAGE.	
Expression system	Escherichia coli	
Accession	<u>P55212</u>	
Protein length	Full length protein	
Animal free	No	
Nature	Recombinant	
Species	Human	
Sequence	<pre> MSSASGLRRGHPAGGEENMTETDAFYKREMFDPAEKYK MDHRRRGIALIF NHERFFWHL TLPERRGTCADRDNLTRRFSDLGFEVKCFN DLKAEELLLKI HEVSTVSHADADCFVFCVFLSHGEGNHIYADAKIEIQLTG LFKGDKCHS LVGKPKIFIQACRGNQHDVPV IPLDVVDNQTEKLD TNITEV DAASVYTL PAGADFLMCYSVAEGYSHRETVNGSWYQDLCEMLGKY GSSLEFTELLT LVNRKVSQRRVDFCKDPSAIGKKQVPCFASMLTKKLH FFPKSNHHHHH H </pre>	
Amino acids	1 to 293	
Tags	His tag C-Terminus	
Additional sequence information	Pro-caspase-6 is activated by autocleavage to yield 20 kDa and 18 kDa proteins (large subunit) and an 11 kDa small subunit (His-tag) that dimerize to form the active enzyme.	

Specifications

Specifications

Our **Abpromise guarantee** covers the use of **ab198067** in the following tested applications.

The application notes include recommended starting dilutions; optimal dilutions/concentrations should be determined by the end user.

Applications	Functional Studies SDS-PAGE
Form	Liquid
Additional notes	Previously labelled as Caspase-6.

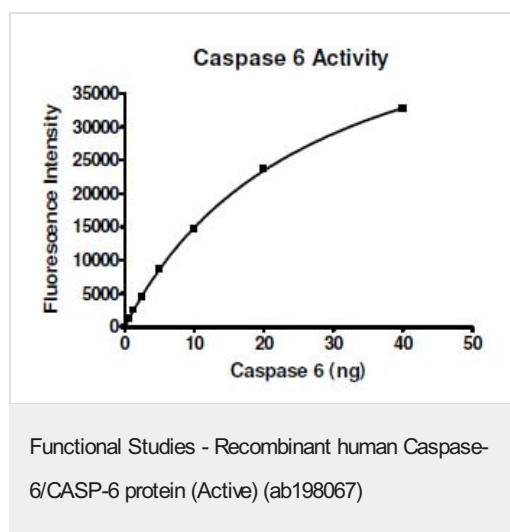
Preparation and Storage

Stability and Storage	Shipped on Dry Ice. Store at -80°C. Avoid freeze / thaw cycle. pH: 8.00 Preservative: 2.18% Imidazole Constituents: 0.63% Tris HCl, 0.64% Sodium chloride, 0.02% Potassium chloride, 0.01% Tween, 20% Glycerol (glycerin, glycerine) This product is an active protein and may elicit a biological response in vivo, handle with caution.
------------------------------	---

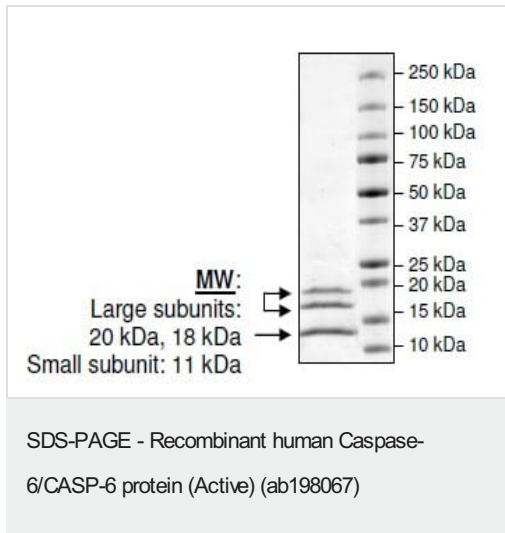
General Info

Function	Involved in the activation cascade of caspases responsible for apoptosis execution. Cleaves poly(ADP-ribose) polymerase in vitro, as well as lamins. Overexpression promotes programmed cell death.
Sequence similarities	Belongs to the peptidase C14A family.
Post-translational modifications	Cleavages by caspase-3, caspase-8 or -10 generate the two active subunits.
Cellular localization	Cytoplasm.

Images



Specific activity of ab198067



4-20% SDS-PAGE analysis of 2.2 µg ab198067 with Coomassie staining.

Please note: All products are "FOR RESEARCH USE ONLY. NOT FOR USE IN DIAGNOSTIC PROCEDURES"

Our Abpromise to you: Quality guaranteed and expert technical support

- Replacement or refund for products not performing as stated on the datasheet
- Valid for 12 months from date of delivery
- Response to your inquiry within 24 hours
- We provide support in Chinese, English, French, German, Japanese and Spanish
- Extensive multi-media technical resources to help you
- We investigate all quality concerns to ensure our products perform to the highest standards

If the product does not perform as described on this datasheet, we will offer a refund or replacement. For full details of the Abpromise, please visit <https://www.abcam.com/abpromise> or contact our technical team.

Terms and conditions

- Guarantee only valid for products bought direct from Abcam or one of our authorized distributors