

Recombinant Human Cathepsin C protein ab158099

1 Image

Description

Product name	Recombinant Human Cathepsin C protein
Expression system	Wheat germ
Protein length	Full length protein
Animal free	No
Nature	Recombinant
Species	Human
Sequence	MGAGPSLLLAALLLLLSGDGAVRCDTPANCTYLDLLGTW VFQVGSSGSQR DVNCSVMGPQEKKVVVYLQKLDAYDDLGNSGHFTIYNQ GFEMLNDYK WFAFFKYKEEGSKVTTYCNETMTGWVHDLGRNWACFT GKKVGTASENVY VNTAHLKNSQEKYSNRLYKYDHNFKAINAIQKSWTATTYM EYETLTLGD MIRRSGGHSRKIPRPKPAPLTAEIQQKILHLPTSWDWRNVH GINFVSPVR NQASCGSCYSFASMGMLEARIRILTNNSTPILSPQEVVS CSQYAQGCEG GFPYLIAGKYAQDFGLVEEACFPYTGTDSPCKMKEDCFRY YSSEYHYVGG FYGGCNEALMKLELVHHGPMVAFAFEVYDDFLHYKKGMYHH TGLRDPFNPF ELTNHAVLLVGYGTDSASGMDYWMKNSWGTGWGENGYF RIRRGTDCAIESIAVAATPIPKL
Amino acids	1 to 463
Tags	GST tag N-Terminus

Specifications

Our **Abpromise guarantee** covers the use of **ab158099** in the following tested applications.

The application notes include recommended starting dilutions; optimal dilutions/concentrations should be determined by the end user.

Applications	ELISA
	Western blot

Form	Liquid
Additional notes	This product was previously labelled as DPP1.

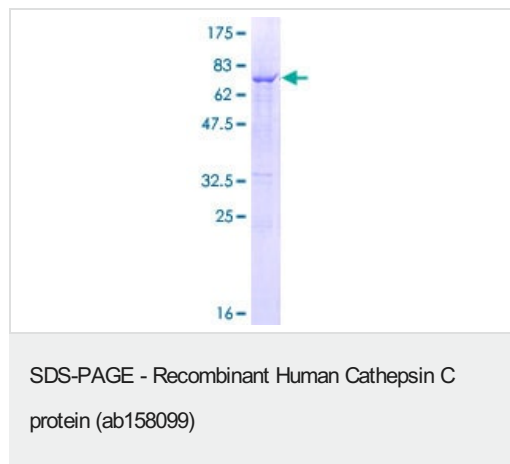
Preparation and Storage

Stability and Storage	Shipped on dry ice. Upon delivery aliquot and store at -80°C. Avoid freeze / thaw cycles. pH: 8.00 Constituents: 0.31% Glutathione, 0.79% Tris HCl
------------------------------	--

General Info

Function	Thiol protease. Has dipeptidylpeptidase activity. Active against a broad range of dipeptide substrates composed of both polar and hydrophobic amino acids. Proline cannot occupy the P1 position and arginine cannot occupy the P2 position of the substrate. Can act as both an exopeptidase and endopeptidase. Activates serine proteases such as elastase, cathepsin G and granzymes A and B. Can also activate neuraminidase and factor XIII.
Tissue specificity	Ubiquitous. Highly expressed in lung, kidney and placenta. Detected at intermediate levels in colon, small intestine, spleen and pancreas.
Involvement in disease	Papillon-Lefevre syndrome Haim-Munk syndrome Periodontitis, aggressive, 1
Sequence similarities	Belongs to the peptidase C1 family.
Post-translational modifications	N-glycosylated. While glycosylation at Asn-53, Asn-119 and Asn-276 is mediated by STT3A-containing complexes, glycosylation at Asn-29 is mediated STT3B-containing complexes. In approximately 50% of the complexes the exclusion domain is cleaved at position 58 or 61. The two parts of the exclusion domain are held together by a disulfide bond.
Cellular localization	Lysosome.

Images



ab158099 on a 12.5% SDS-PAGE stained with Coomassie Blue.

Our Abpromise to you: Quality guaranteed and expert technical support

- Replacement or refund for products not performing as stated on the datasheet
- Valid for 12 months from date of delivery
- Response to your inquiry within 24 hours

- We provide support in Chinese, English, French, German, Japanese and Spanish
- Extensive multi-media technical resources to help you
- We investigate all quality concerns to ensure our products perform to the highest standards

If the product does not perform as described on this datasheet, we will offer a refund or replacement. For full details of the Abpromise, please visit <https://www.abcam.com/abpromise> or contact our technical team.

Terms and conditions

- Guarantee only valid for products bought direct from Abcam or one of our authorized distributors