

Recombinant human Cathepsin V protein ab198089

2 Images

Description	
Product name	Recombinant human Cathepsin V protein
Biological activity	Specific Activity: ≥ 436 pmol/min/μg. Assay Conditions: 25 mM sodium acetate pH 5.5, 0.1 M NaCl, 5 mM DTT, 25 μM substrate (Z-Leu-Arg-AMC), 5 min, room temperature.
Purity	≥ 90 % SDS-PAGE.
Expression system	Mammalian
Accession	<u>O60911</u>
Protein length	Full length protein
Animal free	No
Nature	Recombinant
Species	Human
Sequence	VPKFDQNLDTKWYQWKATHRRLYGANEEGWRRRAVWEK NMKMIELHNGEYS QGKHGFTMAMNAFGDMTNEEFRQMMGCFRNQKFRKGK VFREPLFLDLPKS VDWRKKGYVTPVKNQKQCGSCWAFSATGALEGQMFRK TGKLVSLSEQNLV DCSRPQGNQGCNGGFMARAFQYVKENGGLDSEESYPYV AVDEICKYRPEN SVANDTGFTVVAPGKEKALMKAVATVGPISVAMDAGHSS FQFYKSGIYFE PDCSSKNLDHGVLVVGYGFEGANSNNSKYWLVKNSWGP EWGSNGYVKIAK DKNNHCGIATAASYPNV
Predicted molecular weight	37 kDa including tags
Amino acids	18 to 334
Tags	His tag C-Terminus
Additional sequence information	With CD33 signal peptide (aa 1-16); NM_001333.2.
Specifications	

Our **Abpromise guarantee** covers the use of **ab198089** in the following tested applications.

The application notes include recommended starting dilutions; optimal dilutions/concentrations should be determined by the end user.

Applications	Functional Studies
	SDS-PAGE
Form	Liquid
Additional notes	ab198089 is expressed in FreeStyle 293-F cells.

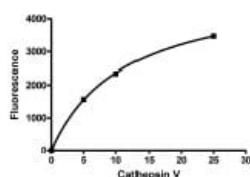
Preparation and Storage

Stability and Storage	Shipped on Dry Ice. Store at -80°C. Avoid freeze / thaw cycle.
	pH: 5
	Preservative: 1.53% Imidazole
	Constituents: 0.05% (R*,R*)-1,4-Dimercaptobutan-2,3-diol, 0.71% Tris HCl, 0.72% Sodium chloride, 0.02% Potassium chloride, 10% Glycerol (glycerin, glycerine)
This product is an active protein and may elicit a biological response in vivo, handle with caution.	

General Info

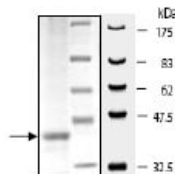
Function	Cysteine protease. May have an important role in corneal physiology.
Tissue specificity	Predominantly expressed in the thymus and testis. Also expressed in corneal epithelium, and to a lesser extent in conjunctival epithelium and skin.
Sequence similarities	Belongs to the peptidase C1 family.
Cellular localization	Lysosome.

Images



Activity assay using ab198089.

Functional Studies - Recombinant human Cathepsin V protein (ab198089)



10% SDS-PAGE analysis of 3 µg of ab198089 with Coomassie staining.

SDS-PAGE - Recombinant human Cathepsin V protein (ab198089)

Please note: All products are "FOR RESEARCH USE ONLY. NOT FOR USE IN DIAGNOSTIC PROCEDURES"

Our Abpromise to you: Quality guaranteed and expert technical support

- Replacement or refund for products not performing as stated on the datasheet
- Valid for 12 months from date of delivery
- Response to your inquiry within 24 hours
- We provide support in Chinese, English, French, German, Japanese and Spanish
- Extensive multi-media technical resources to help you
- We investigate all quality concerns to ensure our products perform to the highest standards

If the product does not perform as described on this datasheet, we will offer a refund or replacement. For full details of the Abpromise, please visit <https://www.abcam.com/abpromise> or contact our technical team.

Terms and conditions

- Guarantee only valid for products bought direct from Abcam or one of our authorized distributors