

Recombinant Human CBR3 protein ab86848

★★★★★ [1 Abreviews](#) [1 Image](#)

Description

Product name	Recombinant Human CBR3 protein
Purity	> 95 % SDS-PAGE. ab86848 is purified using conventional chromatography techniques.
Expression system	Escherichia coli
Protein length	Full length protein
Animal free	No
Nature	Recombinant
Species	Human
Sequence	MGSSHHHHHH SSGLVPRGSH MSSCSRVALV TGANRGIGLA IARELCRQFS GDVVLTARDV ARGQAAVQQL QAEGLSPRFH QLDIDDLQSI RALRDFLRKE YGGLNVLVNN AAVAFKSDDP MPFDIKAEMT LKTNFFATR NMCNELLPI MKPHGRVVNISS LQCLRAFENC SEDLQERFHS ETLTEGDLVD LMKKFVEDTK NEVHEREGWP NSPYGVSKLG VTVLSRILAR RLDEKRKADR ILVNACCPGP VKTDMDGKDS IRTVEEGAET PVYLALLPPD ATEPQGQLVH DKVVQNW

Specifications

Our Abpromise guarantee covers the use of ab86848 in the following tested applications.	
The application notes include recommended starting dilutions; optimal dilutions/concentrations should be determined by the end user.	
Applications	Western blot SDS-PAGE
Form	Liquid

Preparation and Storage

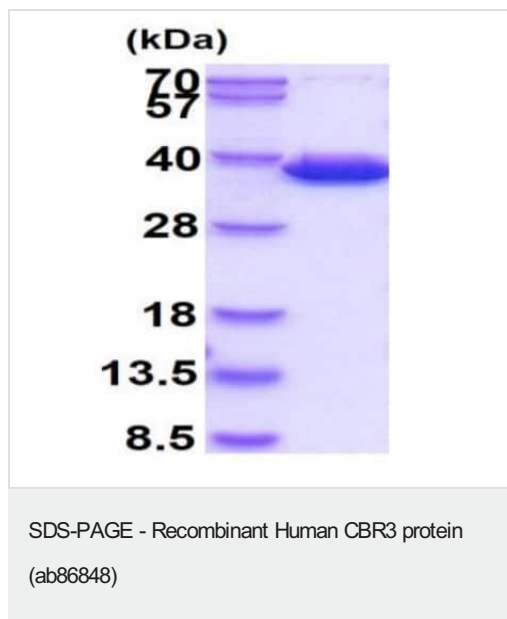
Stability and Storage	Shipped at 4°C. Upon delivery aliquot and store at -20°C or -80°C. Avoid repeated freeze / thaw cycles. pH: 8.00
-----------------------	---------------------------------------------------------------------------------------------------------------------

Constituents: 0.316% Tris HCl, 10% Glycerol (glycerin, glycerine)

General Info

Function	Has low NADPH-dependent oxidoreductase activity towards 4-benzoylpyridine and menadione (in vitro).
Tissue specificity	Detected in ovary, pancreas, intestine, colon, kidney, brain, thymus, lung, heart, liver, spleen, leukocyte, prostate and testis.
Sequence similarities	Belongs to the short-chain dehydrogenases/reductases (SDR) family.
Cellular localization	Cytoplasm.

Images



15% SDS-PAGE showing ab86848 at approximately 33kDa (3μg).

Please note: All products are "FOR RESEARCH USE ONLY. NOT FOR USE IN DIAGNOSTIC PROCEDURES"

Our Abpromise to you: Quality guaranteed and expert technical support

- Replacement or refund for products not performing as stated on the datasheet
- Valid for 12 months from date of delivery
- Response to your inquiry within 24 hours
- We provide support in Chinese, English, French, German, Japanese and Spanish
- Extensive multi-media technical resources to help you
- We investigate all quality concerns to ensure our products perform to the highest standards

If the product does not perform as described on this datasheet, we will offer a refund or replacement. For full details of the Abpromise, please visit <https://www.abcam.com/abpromise> or contact our technical team.

Terms and conditions

- Guarantee only valid for products bought direct from Abcam or one of our authorized distributors