

## Product datasheet

# Recombinant Human CBX1 / HP1 beta protein ab109847

[2 Images](#)

### Description

---

<b>Product name</b>	Recombinant Human CBX1 / HP1 beta protein
<b>Purity</b>	> 85 % SDS-PAGE. ab109847 is purified using conventional chromatography techniques.
<b>Expression system</b>	Escherichia coli
<b>Accession</b>	<b><u>P83916</u></b>
<b>Protein length</b>	Full length protein
<b>Animal free</b>	No
<b>Nature</b>	Recombinant
<b>Species</b>	Human
<b>Sequence</b>	<b>MGSSHHHHHSSGLVPRGSHMGKKQNKKKVEEVLEEE EEEYVVEKVLDRR VVKGKVEYLLKWKGFSDNTWEPEENLDCPDIAEFLQ SQKTAHETDKS EGGKRKADSDSEDKGEESKPKKKKEESEKPRGFARGLE PERIIGATDSSG ELMFLMKWKNSDEADLVPAAKAVKCPQVVISFYEERLT WHSYPSEDDDK KDDKN</b>
<b>Predicted molecular weight</b>	24 kDa including tags
<b>Amino acids</b>	1 to 185
<b>Tags</b>	His tag N-Terminus

### Specifications

---

Our **Abpromise guarantee** covers the use of **ab109847** in the following tested applications.

The application notes include recommended starting dilutions; optimal dilutions/concentrations should be determined by the end user.

<b>Applications</b>	SDS-PAGE Western blot
<b>Mass spectrometry</b>	MALDI-TOF
<b>Form</b>	Liquid

## Preparation and Storage

---

### Stability and Storage

Shipped at 4°C. Store at +4°C short term (1-2 weeks). Upon delivery aliquot. Store at -20°C or -80°C. Avoid freeze / thaw cycle.

pH: 8.00

Constituents: 0.0308% DTT, 0.316% Tris HCl, 20% Glycerol (glycerin, glycerine), 0.058% Sodium chloride

## General Info

---

### Function

Component of heterochromatin. Recognizes and binds histone H3 tails methylated at 'Lys-9', leading to epigenetic repression. Interaction with lamin B receptor (LBR) can contribute to the association of the heterochromatin with the inner nuclear membrane.

### Tissue specificity

Expressed in all adult and embryonic tissues.

### Sequence similarities

Contains 2 chromo domains.

### Post-translational modifications

Not phosphorylated.  
Ubiquitinated.

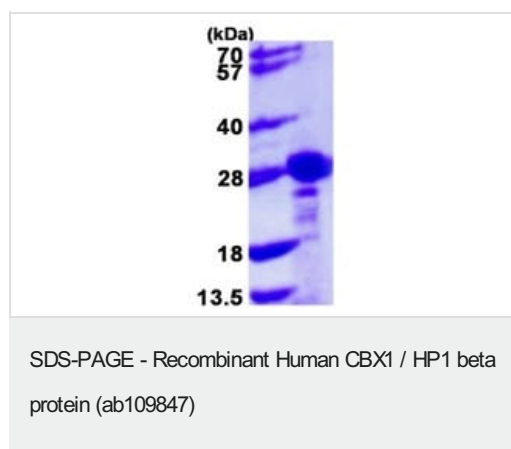
### Cellular localization

Nucleus. Unassociated with chromosomes during mitosis.

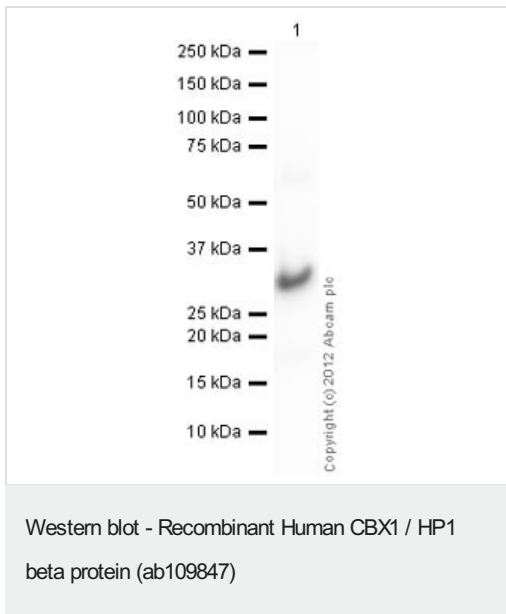
---

## Images

---



15% SDS-PAGE showing ab109847 at approximately 23.6 kDa (3µg).



Anti-CBX1 / HP1 beta antibody (**ab10478**) at 1/500 dilution +  
 Recombinant Human CBX1 / HP1 beta protein (ab109847) at 0.01  
 µg

**Secondary**

Goat Anti-Rabbit IgG H&L (HRP) preadsorbed (**ab97080**) at  
 1/5000 dilution

Developed using the ECL technique.

Performed under reducing conditions.

**Exposure time:** 10 seconds

**Please note:** All products are "FOR RESEARCH USE ONLY. NOT FOR USE IN DIAGNOSTIC PROCEDURES"

**Our Abpromise to you: Quality guaranteed and expert technical support**

- Replacement or refund for products not performing as stated on the datasheet
- Valid for 12 months from date of delivery
- Response to your inquiry within 24 hours
- We provide support in Chinese, English, French, German, Japanese and Spanish
- Extensive multi-media technical resources to help you
- We investigate all quality concerns to ensure our products perform to the highest standards

If the product does not perform as described on this datasheet, we will offer a refund or replacement. For full details of the Abpromise, please visit <https://www.abcam.com/abpromise> or contact our technical team.

**Terms and conditions**

- Guarantee only valid for products bought direct from Abcam or one of our authorized distributors