

Product datasheet

Recombinant Human CBX4 protein ab152885

1 Image

Description

Product name	Recombinant Human CBX4 protein
Expression system	Wheat germ
Accession	<u>O00257</u>
Protein length	Full length protein
Animal free	No
Nature	Recombinant
Species	Human
Sequence	MELPAVGEHVFVAVESIEKKRIRKGRVEYLVKWRGWSPKY NTWEPEENILD PRLLIAFQNRERQEQLMGYRKRGPCKPLVVQVPTFARR SNVLTGLQDSS TDNRAKLDLGAQGGQGHQYELNSKKHHHHAVGLNLSHV RKRCLETHGE REPCKKRLTARSISTPTCLGGSPAAERPADLPPAAALPQP EVILLDSLDL EPIDLRVCVTRSEAGEPPSSLQVKPETPASAAVAVAAAA APTTTAEKPPA EAQDEPAESLSEFKPFFGNIITDVTANCLTVTFKEYVTV
Predicted molecular weight	58 kDa including tags
Amino acids	1 to 290

Specifications

Our **Abpromise guarantee** covers the use of **ab152885** in the following tested applications.

The application notes include recommended starting dilutions; optimal dilutions/concentrations should be determined by the end user.

Applications	ELISA SDS-PAGE Western blot
Form	Liquid
Additional notes	

Preparation and Storage

Stability and Storage

Shipped on dry ice. Upon delivery aliquot and store at -80°C. Avoid freeze / thaw cycles.

pH: 8.00

Constituents: 0.31% Glutathione, 0.79% Tris HCl

General Info

Function

E3 SUMO-protein ligase which facilitates SUMO1 conjugation by UBE2I. Component of the Polycomb group (PcG) multiprotein PRC1 complex, a complex required to maintain the transcriptionally repressive state of many genes, including Hox genes, throughout development. PcG PRC1 complex acts via chromatin remodeling and modification of histones; it mediates monoubiquitination of histone H2A 'Lys-119', rendering chromatin heritably changed in its expressibility.

Tissue specificity

Ubiquitous.

Pathway

Protein modification; protein sumoylation.

Sequence similarities

Contains 1 chromo domain.

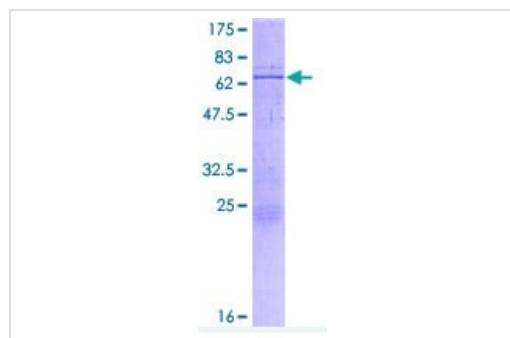
Post-translational modifications

Phosphorylated on Thr-497 by HIPK2 upon DNA damage; which enhances E3 SUMO-protein ligase activity and promotes sumoylation on Lys-494.

Cellular localization

Nucleus.

Images



12.5% SDS-PAGE analysis of ab152885 stained with Coomassie Blue.

SDS-PAGE - Recombinant Human CBX4 protein
(ab152885)

Please note: All products are "FOR RESEARCH USE ONLY. NOT FOR USE IN DIAGNOSTIC PROCEDURES"

Our Abpromise to you: Quality guaranteed and expert technical support

- Replacement or refund for products not performing as stated on the datasheet
- Valid for 12 months from date of delivery
- Response to your inquiry within 24 hours
- We provide support in Chinese, English, French, German, Japanese and Spanish

- Extensive multi-media technical resources to help you
- We investigate all quality concerns to ensure our products perform to the highest standards

If the product does not perform as described on this datasheet, we will offer a refund or replacement. For full details of the Abpromise, please visit <https://www.abcam.com/abpromise> or contact our technical team.

Terms and conditions

- Guarantee only valid for products bought direct from Abcam or one of our authorized distributors